

**Q** series

## QFGCEI

Narrow Glass Door Reach-In Merchandiser



QFGCEI - 3000 trim level

### We Listen, Respond... and Deliver!

The QFGCEI model, with its unique slim-line design, offers the right combination of energy efficiency, design versatility and economy to meet your specific needs.

#### KEY FEATURES:

- Energy Efficient Operation**
- Heavy Duty Front Bumper**
- Aluminum Bottom Liner**
- Non CFC Foam Insulation**
- Aluminum Finned-Copper Tubed Coil**
- Under Case Air Return**

**KYSOR** / **WARREN**



Applications

# QFGCEI

Narrow Glass Door Reach-In Merchandiser



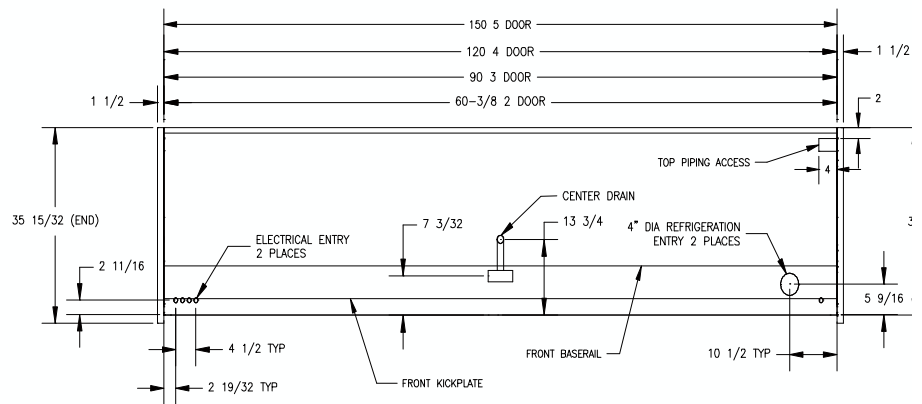
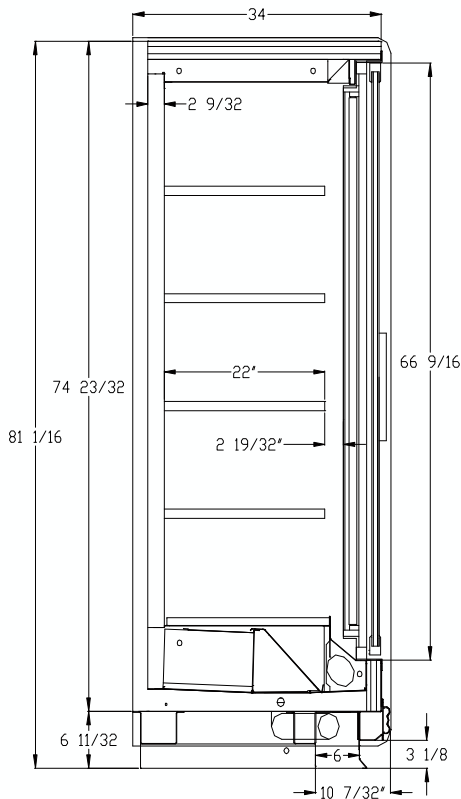
QFGCEI (e-Line Trim)

Capacities	2 Door	3 Door	4 Door	5 Door
Facing Area	24.9 ft <sup>2</sup>	37.1 ft <sup>2</sup>	49.5 ft <sup>2</sup>	61.9 ft <sup>2</sup>
Cubic Capacity	47.0 ft <sup>3</sup>	70.0 ft <sup>3</sup>	93.3 ft <sup>3</sup>	116.9 ft <sup>3</sup>
Dimensions	2 Door	3 Door	4 Door	5 Door
Overall Length (w/o ends)	60.375"	90"	120"	150"
Thickness - Pair Ends	3"	3"	3"	3"
Case Data	2 Door	3 Door	4 Door	5 Door
Anti-Sweat Amps (Eliminator Doors)	1.92	2.81	3.60	4.45
Anti-Sweat Amps (Standard Doors)	3.63	5.25	7.02	8.61
Fan Amps Std	0.70	1.05	1.40	1.75
Light Amps Doors	1.39	1.80	2.32	2.79
Drain Pan Heater (for hot gas defrost)	0.39	0.65	0.91	1.17
Evap. Temp. -17 °F (Ice Cream) Btu/Hr Requirements (Eliminator Doors)	2500	3750	5000	6250
Evap. Temp. -17 °F (Ice Cream) Btu/Hr Requirements (Standard Doors)	2850	4275	5700	7125
Evap. Temp. -10 °F (Frozen Food) Btu/Hr Requirements (Eliminator Doors)	2400	3600	4800	6000
Evap. Temp. -10 °F (Frozen Food) Btu/Hr Requirements (Standard Doors)	2750	4125	5500	6875

Defrost	Per Day	Fail Safe	Termination
Electric @230V	1	45 min.	65 °F
Hot Gas	1	34 min.	65 °F

Case Model	Discharge Air Velocity	Discharge Air Temperature
Frozen Food	250 FPM	-4 °F
Ice Cream	250 FPM	-11 °F

All electrical data are based on 115V except electric defrost heaters.



Enodis® One Company. Countless Solutions.

KYSOR // WARREN

Type I refrigerator, intended for use in an area where the environmental conditions are controlled and maintained such that conditions do not exceed 75°F and 55% relative humidity. Kysor/Warren, whose policy is one of continuous improvement, reserves the right to change at any time, specifications, design or prices without incurring obligation.



5201 Transport Blvd. / Columbus, GA 31907  
800-866-5596 - Phone / 706-568-8990 - Fax / solutions@kysorwarren.com

Dual-Jet and Air Defrost are registered trademarks of Kysor/Warren.  
Kysor/Warren, a subsidiary of Enodis®, PLC. All Rights Reserved.

Kysor/Warren cases are UL and NSF listed.

QFGCEI-0805PD-20060531