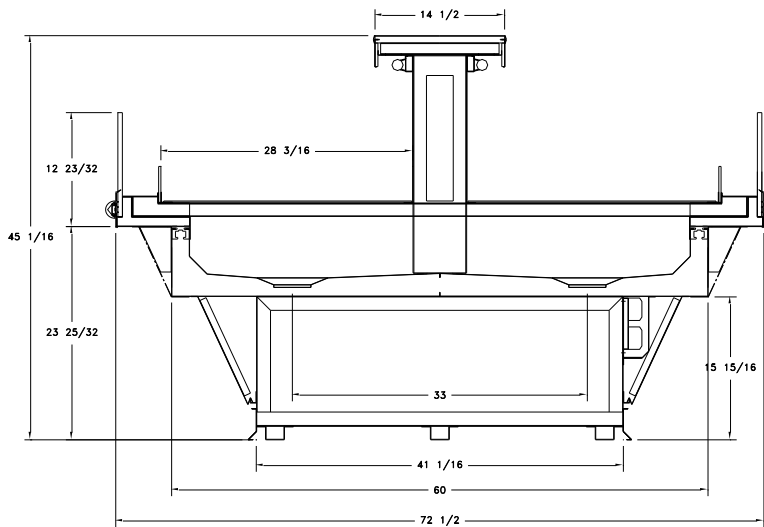
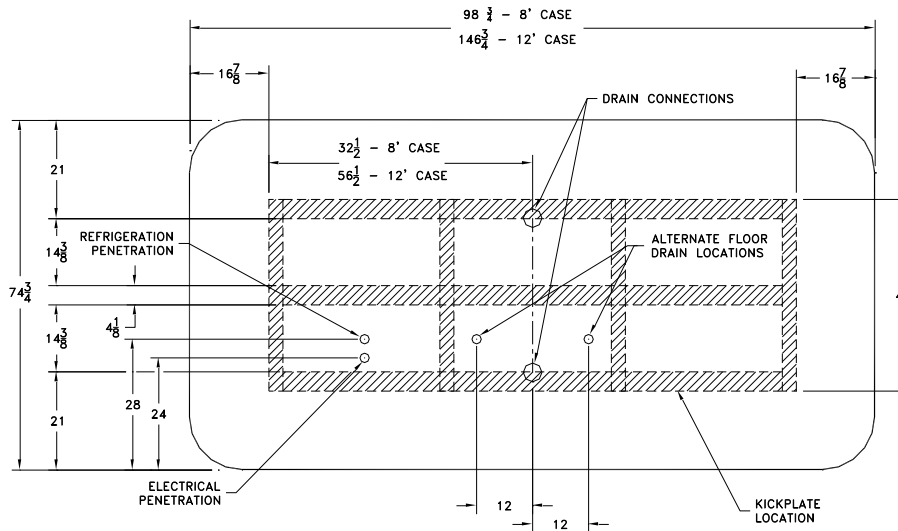


CASE DATA	08	12
STD Fan Amps	1.06	2.12
Light Amps (1 row, canopy)	1.91	3.46
Electric Defrost (Electric - 230V)	11.30	14.80
#Defrost Required	4	4
All electrical data based on 115V and unlighted shelves. For lighted shelves, please add 98 BTU and 0.25 amps per shelf. Add 0.063 amps per foot for nose light.		



Add 3" thickness for a pair of ends.



Type I refrigerator, intended for use in an area where the environmental conditions are controlled and maintained such that conditions do not exceed 75 deg F and 55% relative humidity. Kysor/Warren, whose policy is one of continuous improvement, reserves the right to change at any time, specifications, design or prices without incurring obligation. Dual -Jet and Air Defrost are registered trademarks of Kysor/Warren.

Evap Temp	BTU/ FT	Discharge Air Velocity	Discharge Air Temp
+20°F	655	N/A	31°F
NOTE: For sizing conventional/individual condensing units, ADD 8% to BTU LOAD. Deduct 30 BTU/Door for PSC Models.			

DEFROST CONTROLS			
Defrost	Per Day	Fail Safe	Termination
Electric	6	30 min	55°F



The above case model, has case lengths that are UL and NSF approved.

Issue: 6.17.2010

Kysor/Warren
5201 Transport Blvd.
Columbus, GA 31907

800-866-5596 phone
706-568-8990 fax

www.kysorwarren.com

