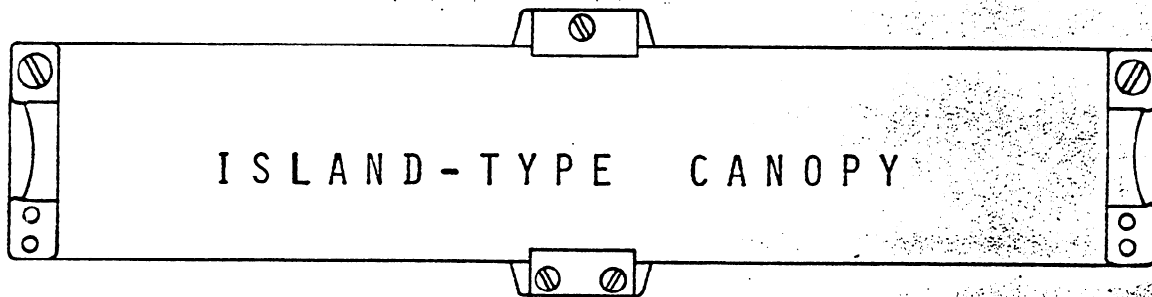


INSTALLATION & SERVICE INSTRUCTIONS

FOR MODEL(S)



**please retain
for future use**

**engineering dept.
bulletin # 72-115-1**

IN THE CONSTANT EFFORT TO IMPROVE OUR PRODUCTS, WE
RESERVE THE RIGHT TO CHANGE AT ANY TIME SPECIFICATIONS,
DESIGN, OR PRICES WITHOUT INCURRING OBLIGATION.

WARREN // Dual Jet

905 Memorial Drive, S.E., P.O. Box 1436
Atlanta, Georgia 30301

SHERER // Dual Jet

Marshall, Mich. 49068
West Coast Sales Office:
2118 North Main Street, Walnut Creek, Calif. 94596

KYSOR

DIVISIONS OF KYSOR INDUSTRIAL CORPORATION

CANOPY
INSTALLATION INSTRUCTIONS

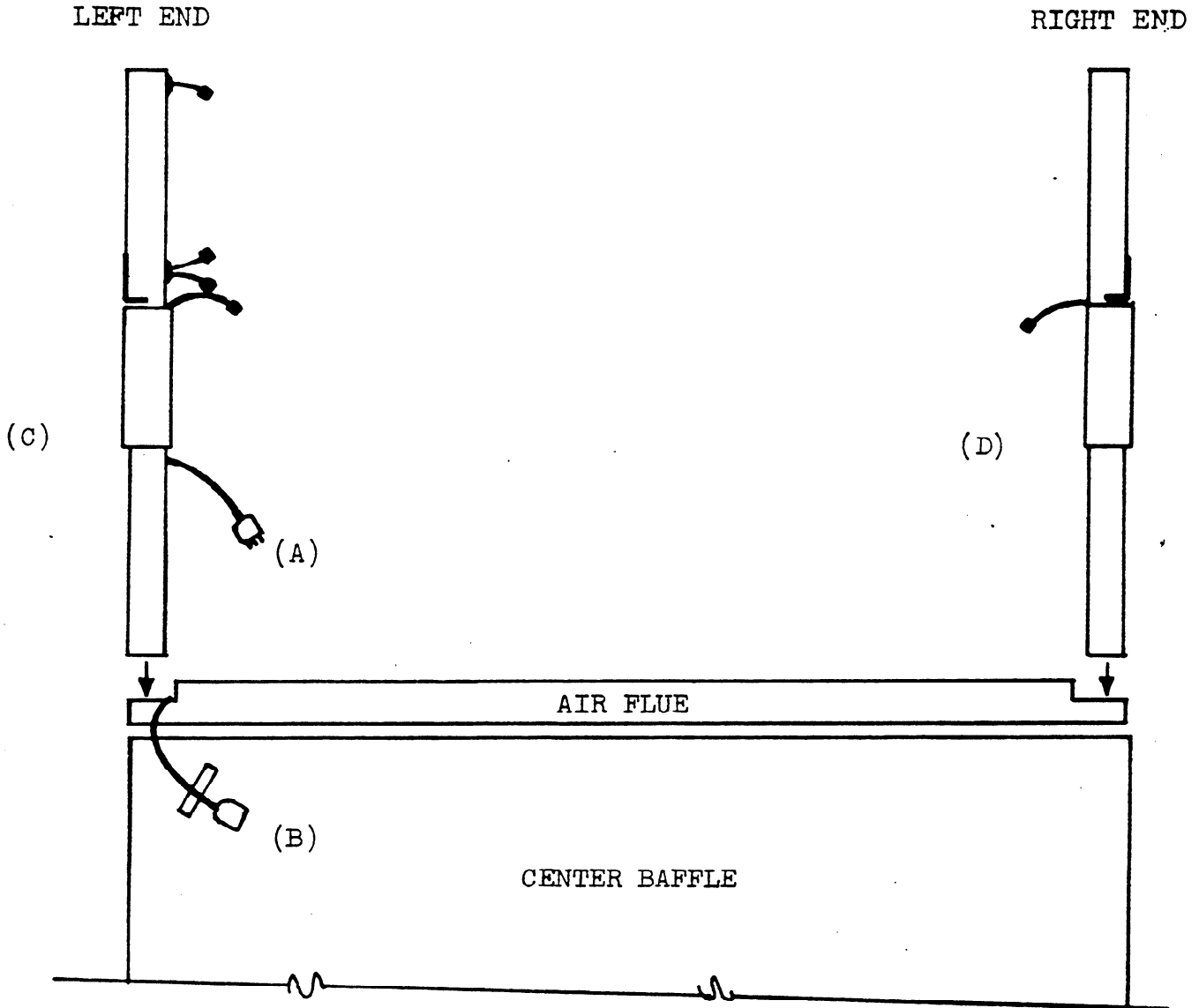
FOR

C4M - TCM

WC4M - WTCM

LEG INSTALLATION

2 SHELF CANOPY
FOR TL OR WTL MODELS



- (1) PLUG (A) INTO (B) AND WRAP WITH ELECTRICAL TAPE.
- (2) FEED WIRE DOWN BETWEEN BAFFLES AS LEG (C) IS SLID INTO SOCKET IN CASE.
- (3) SLIP LEG (D) INTO SOCKET AT OPPOSITE END.

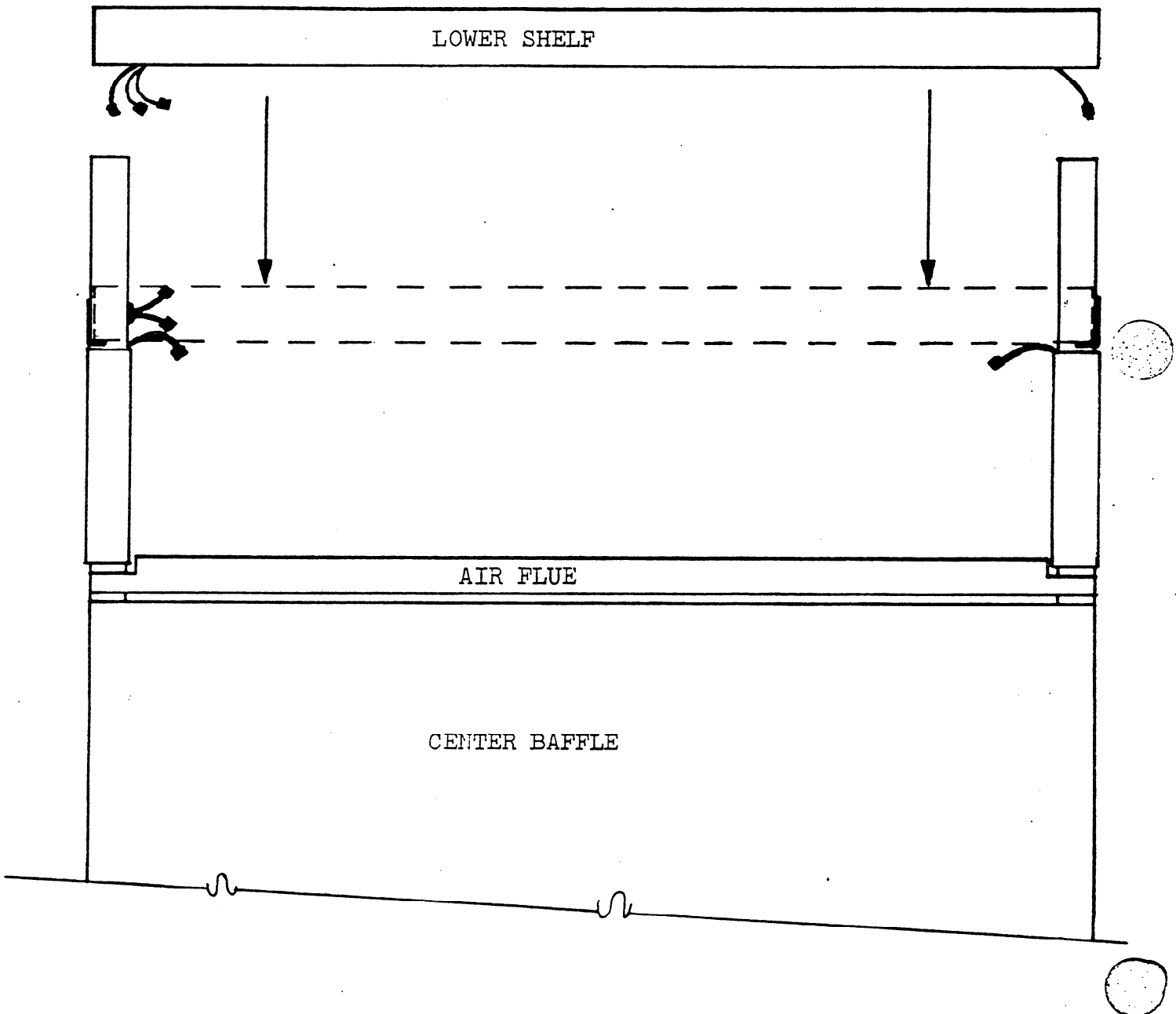
LOWER SHELF INSTALLATION

2 SHELF CANOPY FOR TL OR WTL MODELS

1. SET LH END OF SHELF ON SUPPORT. KEEP WIRES CLEAR TO AVOID PINCHING.
2. SET RH END DOWN ON SUPPORT ARM.
3. CONNECT HEATERS AND LIGHTS. WHITE WIRE FROM LEG IS HEATER CIRCUIT. OTHER WIRES ARE IDENTIFIED BY TAGS. CAUTION SHOULD BE TAKEN TO ASSURE THAT TAGS CORRESPOND TO CONNECTING PLUGS.
4. SEE PAGE THREE (3) FOR SHELF FASTENING INSTRUCTIONS.

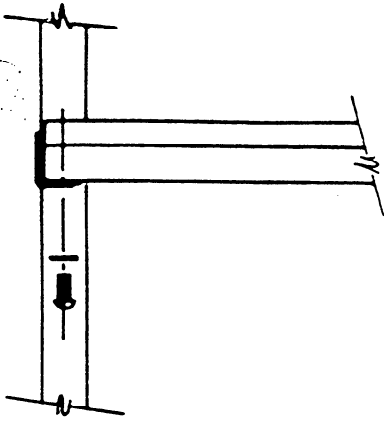
LEFT END

RIGHT END

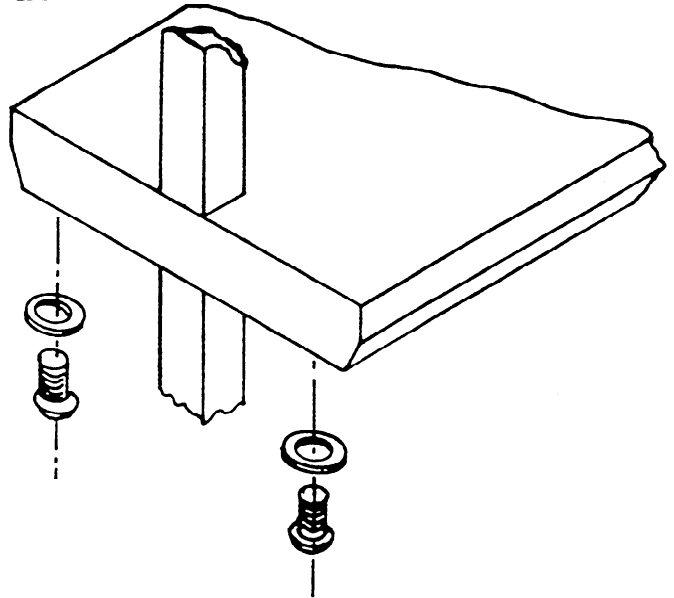


SHELF FASTENING INSTRUCTIONS

ALL MODELS

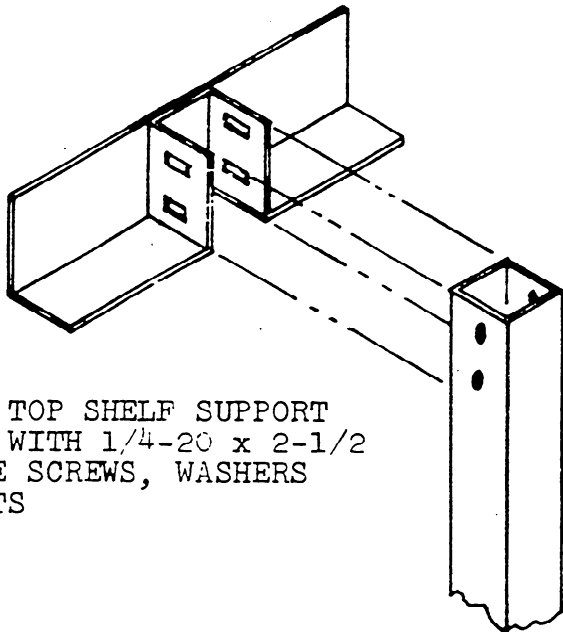


FASTEN SHELVES TO SUPPORT ARMS USING
#10-24 x 1/2 SCREWS WITH WASHERS

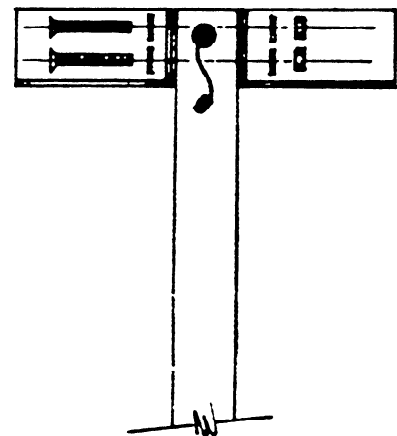


TOP SHELF SUPPORT INSTALLATION

NOTE: FOR (2) SHELF CANOPIES THE BOTTOM SHELF MUST BE
INSTALLED BEFORE TOP SHELF SUPPORT ARMS.



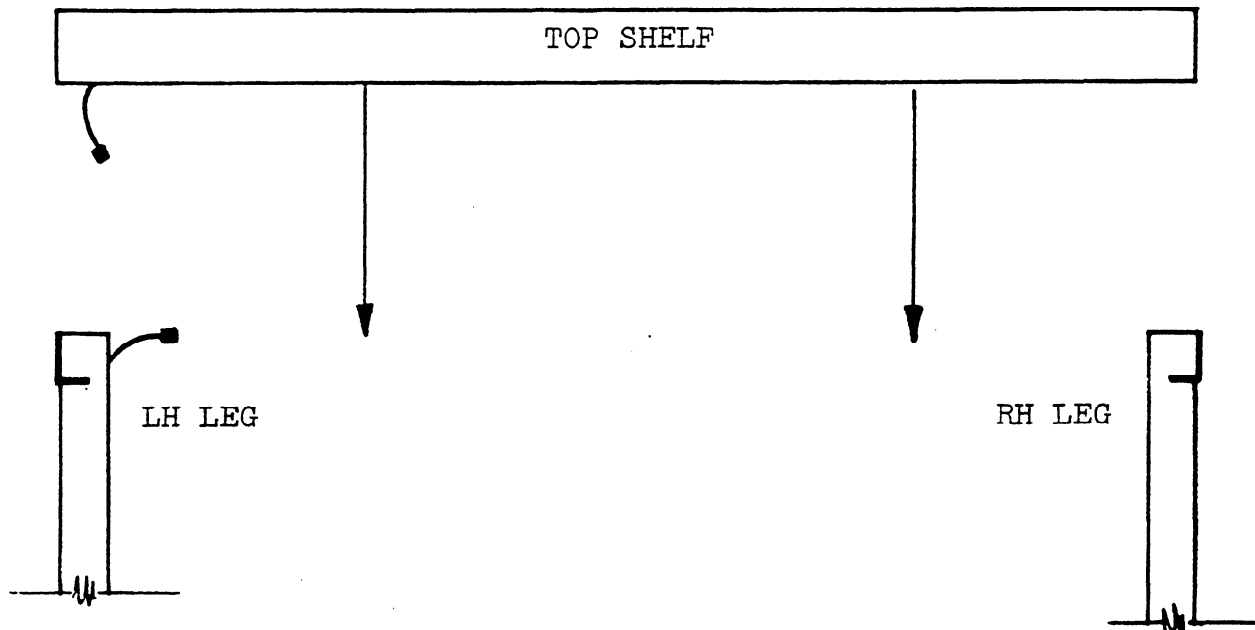
SECURE TOP SHELF SUPPORT
LEG WITH 1/4-20 x 2-1/2
MACHINE SCREWS, WASHERS
AND NUTS



TOP SHELF SUPPORT INSTALLATION
FOR ALL 2 SHELF CANOPIES

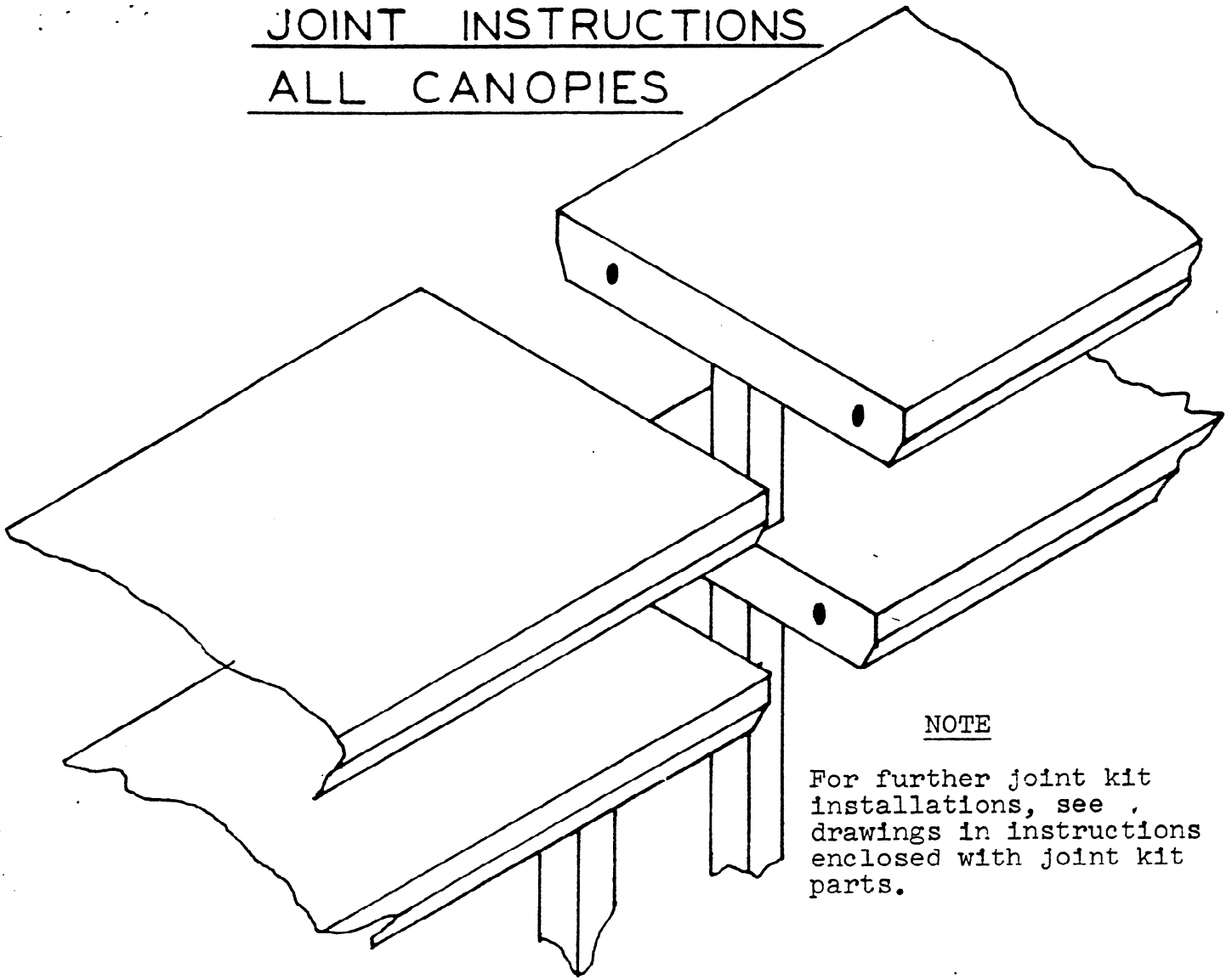
TOP SHELF INSTALLATION

FOR ALL 2 SHELF CANOPIES



1. SET SHELF ON SUPPORT ARMS. KEEP WIRES CLEAR TO AVOID PINCHING.
2. CONNECT LIGHT PLUGS.
3. SECURE SHELF TO SUPPORT ARMS AS SHOWN ON PAGE 3.

JOINT INSTRUCTIONS
ALL CANOPIES



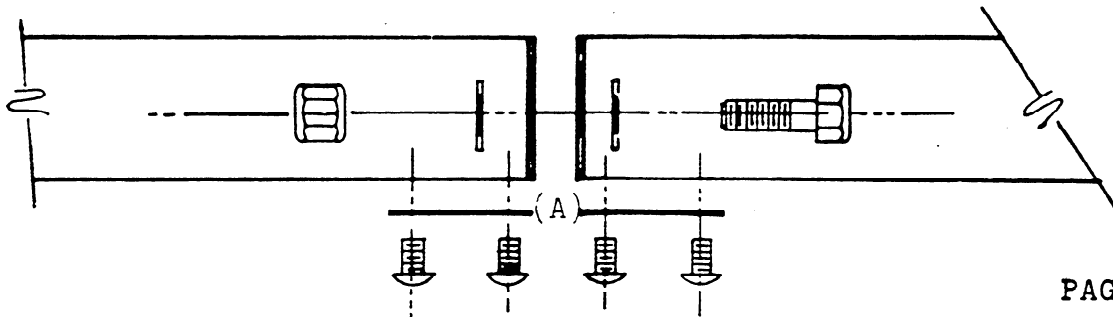
NOTE

For further joint kit installations, see drawings in instructions enclosed with joint kit parts.

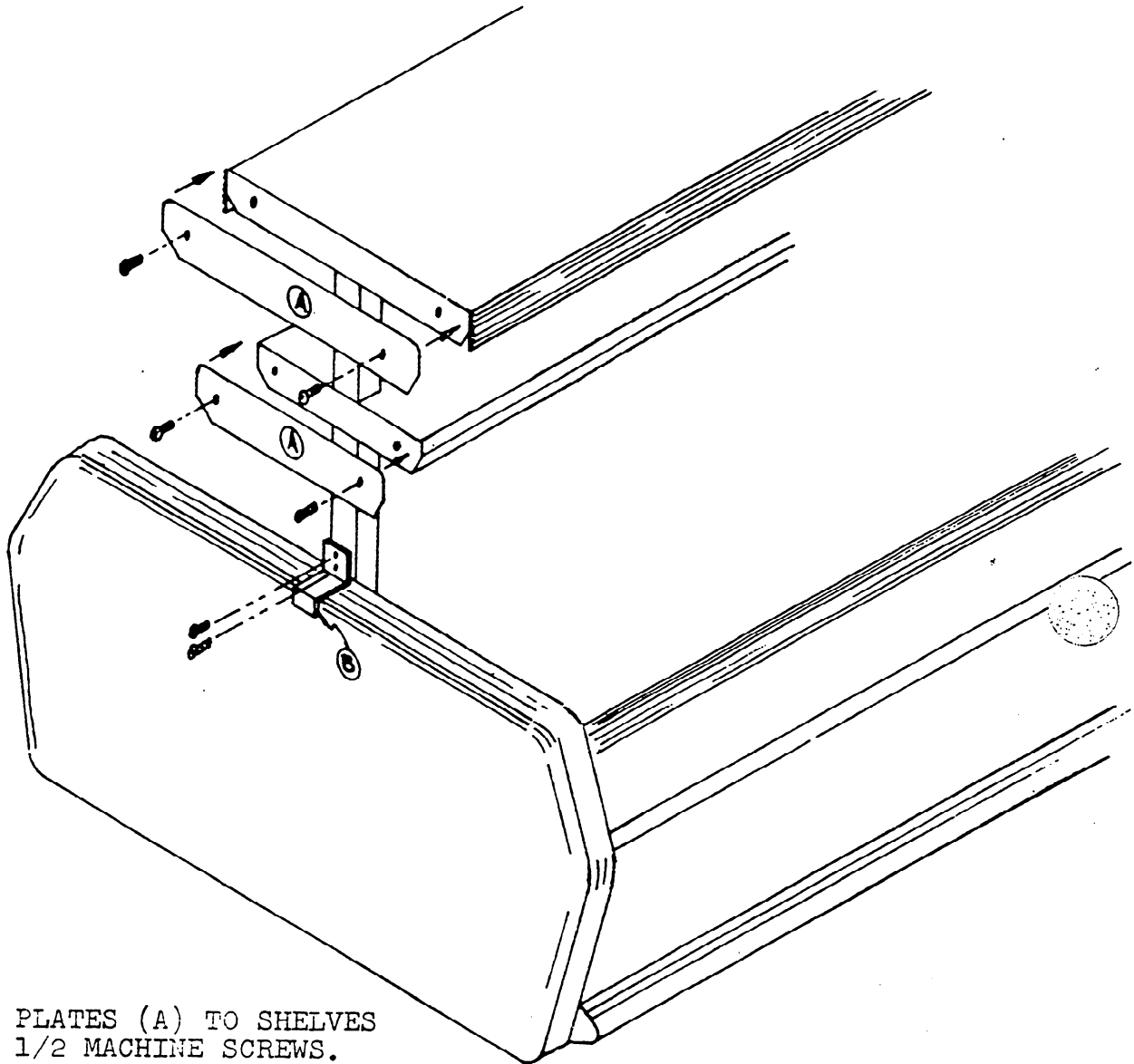
1. FASTEN ADJOINING SHELVES TOGETHER USING $3/8 \times 1-1/4$ MACHINE BOLTS, WASHERS, AND NUTS.

NOTE: IF ADJOINING SHELVES DO NOT LINE UP PERFECTLY, SHELF FASTENING SCREWS (SEE PAGE 3) MAY BE BACKED OUT TO ACCOMMODATE SHIMS UNDER LOW SHELF BETWEEN SHELF AND SUPPORT ARM.

2. INSTALL ACCESS COVERS (A) WITH #10 x $1/2$ MACHINE SCREWS.



END KIT INSTALLATION



1. SECURE END PLATES (A) TO SHELVES WITH #10 x 1/2 MACHINE SCREWS.
2. SECURE END PANEL BRACKETS (B) TO LEGS WITH #10 x 1/2 MACHINE SCREWS.

PACKING LIST

FOR
TWIN-ISLE
TWO-SHELF CANOPIES

PART NO.	DESCRIPTION	TL-8 C4M		TL-12 C4M	
		W/LIGHTS	W/O LIGHTS	W/LIGHTS	W/O LIGHTS
19A13-10	1/4-20 Hex Nut	4	4	4	4
19B12-15	1/4 Washer	8	8	8	8
21A13-12	#10-24 x 1/2 M.S.	8	8	8	8
21A15-24	1/4-20 x 2-1/2 M.S.	4	4	4	4
52A21-33	Shelf Support S-Assy	2	2	2	2
81C12-62	LH Leg Assy	1	1	1	1
81C12-63	RH Leg Assy	1	1	1	1
96F17-144	Bottom Shelf Assy 14"		1		
96F17-145	Bottom Shelf Assy 14"				1
96F17-132	Top Shelf Assy 22"	1	1		
96F17-133	Top Shelf Assy 22"			1	1
96F17-142	Bottom Shelf Assy 14"	1			
96F17-143	Bottom Shelf Assy 14"			1	

PACKING LIST
FOR
TWO-SHELF CANOPIES

PART NO.	DESCRIPTION	WIL-8 C4M		WIL-12 C4M	
		W/LIGHTS	W/O LIGHTS	W/LIGHTS	W/O LIGHTS
19A13-10	1/4-20 Hex Nut	4	4	4	4
19B12-15	1/4 Washer	8	8	8	8
21A13-12	#10-24 x 1/2 M.S.	8	8	8	8
21A15-24	1/4-20 x 2-1/2 M.S.	4	4	4	4
52A21-33	Shelf Support S-Assy	2	2	2	2
81C12-60	LH Leg Assy	1	1	1	1
81C12-61	RH Leg Assy	1	1	1	1
96F16-144	Bottom Shelf Assy 14"		1		
96F16-145	Bottom Shelf Assy 14"				1
96F17-132	Top Shelf Assy 22"	1	1		
96F17-133	Top Shelf Assy 22"			1	1
96F17-142	Bottom Shelf Assy 14"	1			
96F17-143	Bottom Shelf Assy 14"			1	

PACKING LIST

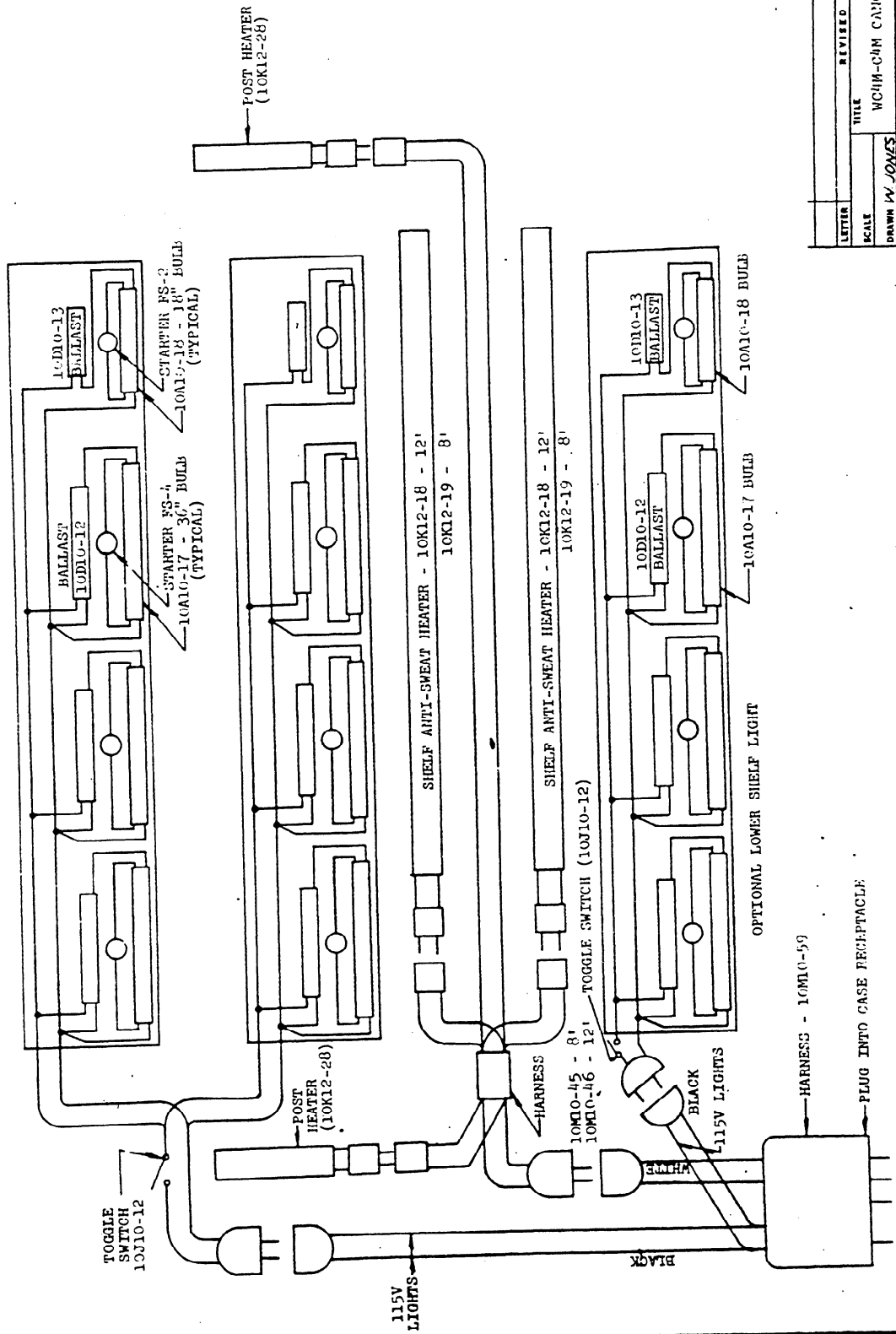
FOR
TWIN-ISLE
TWO-SHELF CANOPIES

PART NO.	DESCRIPTION	WTL-8 WC4M		WTL-12 WC4M	
		W/LIGHTS	W/O LIGHTS	W/LIGHTS	W/O LIGHTS
19A13-10	1/4-20 Hex Nut	4	4	4	4
19B12-15	1/4 Washer	8	8	8	8
21A13-12	#10-24 x 1/2 M.S.	8	8	8	8
21A15-24	1/4-20 x 2-1/2 M.S.	4	4	4	4
52A21-32	Shelf Support S-Assy	2	2	2	2
81C12-58	LH Leg Assy	1	1	1	1
81C12-59	RH Leg Assy	1	1	1	1
96F16-138	Bottom Shelf Assy 22"		1		
96F16-139	Bottom Shelf Assy 22"				1
96F17-130	Top Shelf Assy 28"	1	1		
96F17-131	Top Shelf Assy 28"			1	1
96F17-136	Bottom Shelf Assy 22"	1			
96F17-137	Bottom Shelf Assy 22"			1	

PACKING LIST
FOR
ONE-SHELF CANOPIES

PART NO.	DESCRIPTION	WIL-8 TCM W/LIGHTS	WIL-12 TCM W/LIGHTS
21A13-12	#10-24 x 1/2 M.S.	4	4
81C12-68	LH Leg Assy	1	1
81C12-69	RH Leg Assy	1	1
96F17-140	Top Shelf Assy 18"	1	
96F17-141	Top Shelf Assy 18"		1

NOTE: ONLY 2- 18" LIGHTS AND 3- 18" LIGHT PER ROW SUPPLIED ON 8' MODEL



LETTER	REVISED	DATE	BY
SCALE	TITLE	MCHM-CAM CANOPY WIRING DIAGRAM	
DRAWN W. JONES	THE WARREN COMPANY	DIAGRAM NUMBER	
APPROVED	INCORPORATED	PB-11928	
DATE 9 28 68	ATLANTA 1, GEORGIA		

PACKING LIST

FOR
TWIN-ISLE
ONE-SHELF CANOPIES

PART NO.	DESCRIPTION	TL-8 TCM W/LIGHTS	TL-12 TCM W/LIGHTS
21A13-12	#10-24 x 1/2 M.S.	4	4
81C12-67	RH Leg Assy	1	1
81C12-66	LH Leg Assy	1	1
96F17-140	Top Shelf Assy 18"	1	
96F17-141	Top Shelf Assy 18"		1

PACKING LIST

FOR
TWIN-ISLE
ONE-SHELF CANOPIES

PART NO.	DESCRIPTION	WTL-8 WTCM W/LIGHTS	WTL 12 WTCM W/LIGHTS
21A13-12	#10-24 x 1/2 M.S.	4	4
81C12-64	LH Leg Assy	1	1
81C12-65	RH Leg Assy	1	1
96F17-134	Top Shelf Assy 22"	1	
96F17-135	Top Shelf Assy 22"		1

Heffner

KYSOR Warren-Sherer

DIVISION OF KYSOR INDUSTRIAL CORPORATION

1600 Industrial Blvd., P.O. Box C, Conyers, Georgia 30207 Phone: (404) 483-5600 TWX: 810-766-4172

SUBJECT: CANOPY DATA PLATE SPECIFICATIONS DATE 4/12/83 ENGINEERING BULLETIN

Page 1 of 1

SUPERSEDES #80-187-7

#83-187-4

Add the AMP values listed below to the case data plate. Example:

	<u>XL-8U</u>	+	<u>CT-68</u>	=	<u>XL-8U-CT-68</u>
#1 & 2 Anti-sweat	3.5	+	0.0	=	3.5
#5 & 6 Lighting	0.0	+	1.3	=	1.3

Canopy	8 Ft.		12 Ft.	
	Anti-Sweat	Lights	Anti-Sweat	Lights
CM-61	0.0	0.0+	0.0	0.0+
CM-64	0.0	0.0+	0.0	0.0+
CM-T-63	0.0	1.3+	0.0	2.0+
CM-T-66	0.0	1.3+	0.0	2.0+
WC4M w/btm lights	2.6	4.8	3.6	6.9
WC4M wo/btm lights	2.6	3.2	3.6	4.6
WTCM	2.6	1.6	3.6	2.3

+Add 0.7 amp per optional lighted shelf.

Add 1.4 amp per each row of optional lighted shelves - 8' case

Add 2.1 amp per each row of optional lighted shelves -12' case