

FORM NUMBER: 89-223-07  
DATE: 7/01/89  
REVISED:

# **KYSOR // WARREN**

*The Leading Edge of Technology*

---

# **INSTALLATION & OPERATION MANUAL**

---

MODEL:

**M1A(G)1 / M4A(G)1  
MEAT MERCHANDISERS**

THIS REFRIGERATOR CONFORMS TO THE COMMERCIAL  
REFRIGERATOR MANUFACTURERS ASSOCIATION HEALTH AND  
SANITATION STANDARD.

---

# **KYSOR // WARREN**

*DIVISION OF KYSOR INDUSTRIAL CORPORATION*

1600 INDUSTRIAL BLVD., CONYERS, GEORGIA 30207 / 404•483•5600  
5201 TRANSPORT BLVD., COLUMBUS, GEORGIA 31907

# INSTALLATION AND OPERATING INSTRUCTIONS

FOR

M1A(G)1, M4A(G)1

## SELF-SERVICE MEAT CASES

---

### APPLICATION:

The Kysor//Warren single and multi-shelf and self-service meat cases are designed to merchandise packaged fresh (red) meats and deli products. These cases should be installed and operated according to the instructions contained in the manual to insure proper performance. They are designed for display of products in an air-conditioned store where temperature and humidity are maintained at a maximum of 75 degree F dry bulb temperature, 55% relative humidity, and \*minimum of 65 degree F, 35% relative humidity.

\*Defrost times may be excessive if temperature and humidity drop below the minimum noted.

<u>MODEL</u>	<u>DESCRIPTION</u>
M1A1	Single Deck Meat, Air Defrost, Metal Front
M1AG1	Single Deck Meat, Air Defrost, Glass Front
M4A1	Multi-Deck Meat or Deli, Air Defrost, Metal Front, Usually two or three Adjustable Shelves
M4AG1	Multi-Deck Meat or Deli, Air Defrost, Glass Front, Usually two or three Adjustable Shelves

#### GENERAL

These display refrigerators may be installed individually or in a continuous line-up consisting of several 8' and 12' sections by using a joint trim kit. A plexiglass divider kit must be used between cases operating on different refrigeration systems. Divider will be factory installed if specified on order.

#### SHIPPING DAMAGE

All equipment should be examined for shipping damage before and during unloading. If there is any damage, the carrier should be notified immediately and an inspection requested. The delivery receipt "must" be noted that the equipment was received damaged. If damage is of a concealed nature you must contact the carrier immediately or no later than three days following delivery. A claim must be filed with the carrier by the consignee for all damages.

NOTICE: ALL CLAIMS FOR SHORTAGES MUST BE MADE WITHIN TEN (10) DAYS OF RECEIPT OF SHIPMENT. ANY SHORTAGES CLAIMED AFTER TEN (10) DAYS WILL BE INVOICED AS ADDITIONAL PARTS. ALL CLAIMS FOR SHORTAGES MUST BE MADE WITHIN 10 DAYS AFTER RECEIPT OF SHIPMENT.

#### LOCATION

This refrigerator must be located on a firmly based floor and leveled within plus or minus 1/16". Use shims provided to level your refrigerator.

#### JOINING

Two or more fixtures of like models can be joined together to form a continuous line-up. Instructions for joining fixtures are included in the joint kit. Before lining up refrigerator, inspect refrigeration lines, electrical connections and controls to insure refrigerators are in proper line-up and are in the proper sequence.

NOTE: THESE REFRIGERATORS ARE LINED UP AT THE FACTORY AND ARE NUMBERED. INSURE THEY ARE LINED UP IN THE FIELD IN THE SAME SEQUENCE NUMBER.

#### WASTE OUTLET

These cases are equipped with a 1-1/2" FPT waste outlet connection which terminates in the center of the refrigerator below the insulated bottom. A 1-1/2" galvanized water seal trap is furnished for field installation.

#### INSTALLING DRIP PIPE

Improperly installed drip pipes can seriously effect the operation of this equipment and result in increased maintenance costs. Listed below are some general rules for drip pipe installation.

1. Use the external water seal provided with the equipment. Never double seal a line.
2. Never use a pipe smaller than the size pipe or water seal supplied with the equipment.
3. Always provide as much fall as possible in drip pipe. (1" fall for each 4' of drip pipe.)
4. Avoid long runs in drip pipe which make it impossible to provide maximum fall in pipe.
5. Provide a drip space between drip pipe and floor drain or sewer connection.
6. Do not allow drip pipe to come in contact with uninsulated suction lines, which will cause the condensation from your refrigerator to freeze.

#### CLEANING

To insure minimum maintenance cost, cabinet should be thoroughly emptied and washed out once a month. The exterior should be washed weekly. A mild soap and water solution is recommended for painted surfaces of the cabinet. Do not use cleaners containing abrasive materials which will scratch or dull finish. The waste outlet should be flushed with a bucket of water following each cleaning.

Caution: Never introduce water into the fixture faster than the waste outlet can carry it away.

When cleaning lighted shelves, wipe down with a wet sponge or cloth so that water does not enter the light rails. DO NOT USE A HOSE OR SUBMERGE SHELVES IN WATER. BE SURE REFRIGERATION IS TURNED-OFF AND ALL ELECTRICAL IS OFF BEFORE WASHING YOUR REFRIGERATOR.

#### LOADING

Merchandise should not be placed in the fixture until all controls have been adjusted and the refrigerator is at proper temperature.

At no time should the fixture be stocked beyond the load line located on the top of the back baffle and each end of the refrigerator or over the front edge of adjustable shelves.

For proper operation, you must not stock merchandise above the load lines. In doing so, you will seriously affect the performance, which will result in higher product temperatures and increase operating costs.

## ELECTRICAL

All field installed wiring must comply with the NATIONAL ELECTRICAL CODE AND LOCAL CODES.

## ELECTRICAL RACEWAY

An electrical raceway is provided with each refrigerator for running your fan, anti-sweat heaters, and defrost circuits from case to case without using conduit. This applies, of course, when the front bumper is properly secured into position. This is an approved method by the Underwriters' Laboratories; however, wiring must be run in accordance with local and national electrical codes.

## ELECTRICAL CONNECTIONS

All field connections are made in the electrical raceway.

Make sure that proper voltage is supplied to your refrigerator. Check refrigerator nameplate for fan and anti-sweat volts and defrost volts. If a canopy is furnished, use a separate fused circuit. ALL REFRIGERATORS MUST BE GROUNDED.

Fan motors must operate continuously and panel must be marked sufficiently to prevent the fan motors and anti-sweat heaters from being turned off accidentally. When refrigerators are multiplexed, add the total of these amperage values to determine wire size and circuit protection. Anti-condensate controllers can be used to control the anti-condensate heater.

On electric defrost models, the defrost heater amperages should be added together, and if their rating exceeds the defrost time clock or condensing unit breaker capacity, a defrost relay and circuit breaker must be employed and furnished by others. Make sure that proper wire size and branch circuit protection are employed for safe operation.

Chart #1 shows the electrical ratings for your refrigerator. This is the same information that appears on your refrigerator nameplate.

## CASE LIGHTING (M4A(G)1)

Cases are standard with one row of rapid start lamps (F40T12 N). Ballasts are located behind the canopy. If lighted shelves are supplied, ballasts for each shelf will be located behind the lower bumper assembly in the electrical raceway. See wiring diagram for layout.

## REFRIGERATING FAN MOTORS

The fan motors employed are permanently oiled for the life of the motor and requires no periodic maintenance. They are wired according to the enclosed wiring diagram and MUST RUN CONTINUOUSLY.

## ANTI-SWEAT HEATERS

These heaters are placed in the fixture to eliminate sweat forming on certain areas of fixture.

### EXPANSION VALVE

The expansion valve furnished with your refrigerator has been sized for maximum coil efficiency. To adjust superheat, place a thermocouple under the expansion valve bulb. Read the suction line pressure as near coil as possible. (If at the condensing unit, estimate suction line loss at 2PSIG.) Convert coil suction pressure to temperature. The difference between coil temperature and the thermocouple temperature is superheat. (Use average superheat when expansion valve is hunting.) Do not set superheat until cases have pulled down to operating temperature and never open or close valve over 1/4 turn between adjustments and allow 10 minutes or more between adjustments. Superheat should be set to 6-8 degree F. To access the expansion valve, remove the left deck pan when facing the case.

### REFRIGERATION LINES

The refrigeration lines are located under the deck pans on the 8' and 12' cases. A refrigeration outlet is provided in the front right hand end of the case. Make sure all refrigeration lines lie as close to the refrigerator bottom so as not to obstruct the air pattern or block the deck pans. See the section on "Recommended Piping Practices" for additional details on piping practices.

These 8' and 12' refrigerators have polyurethane foamed-in-place insulation. In opening a ferrule hole, simply heat a piece of copper tubing of the same size as the tubing to be employed and force it through the ferrule hole.

IMPORTANT: SEAL AROUND LINES AFTER CONNECTIONS ARE MADE. KEEP DIRECT FLAME FROM BOTTOM OF REFRIGERATOR, AS HEAT WILL DISINTEGRATE THE ALUMINUM BOTTOM AND INSULATION. USE A HEAT SHIELD WHEN WELDING NEAR THE BOTTOM OF THE CASES.

### REFRIGERANT

R-502 expansion valves are standard. If another refrigerant is used, the order must specify the expansion valve to be supplied.

### HEAT EXCHANGER

Heat exchangers are standard in these refrigerators. They increase operating efficiency and reduce frosting and flood-back to compressor.

### OPERATION

On a single condensing unit systems a thermostat should be used to control temperatures. The thermostat bulb should be mounted in the discharge air. On parallel units, temperature control can be provided by EPR valve, thermostat and liquid line \*solenoid or solid state low pressure controls on compressor unit. Chart #2 shows approximate settings for merchandisers. Since many variables are present in each installation, such as store temperature, length of tubing runs, temperature desired in refrigerator, etc., Chart #2 is only a guide for the installer. \*See Chart #2 note 2.

## DEHYDRATION OF REFRIGERATION SYSTEMS

Please read carefully before placing system into operation. After laying refrigerant lines, they should be blown out before making final connection at fixture or condensing unit. Use dry nitrogen to prevent any foreign matter being left in the lines. Keep pressure below 250 pounds. To prevent scaling due to brazing, dry nitrogen should be allowed to flow through lines while brazing operations are taking place.

After the refrigeration system has been pressure-treated and proven leak-free, it is recommended that the system be dehydrated with a vacuum pump to 1000 microns for the first two evacuations and 500 microns on the third. The triple evacuation method requires evacuating the system three successive times and breaking each vacuum with dry refrigerant. Allow the pressure to rise above atmospheric pressure.

**CAUTION:** DURING INSTALLATION AND SERVICE OF THIS EQUIPMENT, PRECAUTIONS SHOULD BE TAKEN TO PREVENT LOSS OF REFRIGERANT TO THE ATMOSPHERE.

## DEFROST CYCLE

"AIR DEFROST" Models M1A(G)1, M4A(G)1 - On these model refrigerators, the evaporator fans run continuously; however, they reverse the air flow during defrost cycle. In defrost, the air is pulled into the case through the refrigeration discharge grill, through the ducts, coils, and discharged out the return air duct.

Defrost termination is by bi-metal "fixed" temperature control, wired in series and set to terminate at 45 degree F on the coil. See Chart #2 for defrost clock control settings. The defrost cycle is started by the time clock, which reverses the contacts on the relay normally installed at the case, causing the evaporator fan motors to reverse and reverse the air flow to defrost the coils.

**NOTE:** DO NOT USE PUMP DOWN SYSTEMS WITH AIR DEFROST. ON PARALLEL COMPRESSOR SYSTEMS, AN ELECTRIC STOP EPR VALVE OR SOLENOID IS REQUIRED IN THE SUCTION LINE.

"HOT GAS DEFROST" Models M1A(G)1, M4A(G)1 - On hot gas defrost models, (optional for parallel compressor operation only) hot gas is routed through the suction line and evaporator coil. It exits the coil through a by-pass around the expansion valve and heat exchanger to return to the liquid line where the "condensed liquid is used to feed the other cases on the same parallel unit. The case fans continue to operate during defrost to warm up the drain pan and air ducts.

On M1AG1's, an adjustable termination control is used. The control is located at the left end of the case in the electrical raceway. Access to the adjustment dial is from under the electrical raceway. The control bulb is at the same end of the case in the discharge air stream above the coil.

On M4AG1's, an adjustable defrost termination control is used also. The control is located at the left end of the case in the canopy light rail. The control bulb is at the same end of the case in the discharge air stream above the coil.

ELECTRIC DEFROST MODELS - M1A(G)1, M4A(G)1 - When the defrost timer initiates a defrost, the refrigeration stops, case fans continue to operate in the normal direction and defrost heaters are energized to clear the coil of frost and ice. When the coil temperature reaches 55 degree F (as sensed by a Thermo Disc on a return bend at the left end of the coil.) the defrost is terminated and the case returns to the refrigeration cycle.

NOTE: For safety purposes, all electric defrost cases have a thermal cut-off that de-energizes the heaters at temperatures over 70 degree F. This safety Thermo Disc is located adjacent to the defrost terminator.



CHART #1

<u>MODEL</u>	<u>EVAPORATOR FANS (AMPS)</u>	<u>ANTI-COND HEATER (AMPS)</u>	<u>LIGHTS (AMPS)</u>	<u>DEFROST (AMPS)</u>
M1A1-8	.33	.7		8.8
M1AG1-8	.33	1.1		8.8
M1A1-12	.66	1.3		12.9
M1AG1-12	.66	1.7		12.9
M4A1-8	.66	.4	.8	8.8
M4AG1-8	.66	.8	.8	8.8
M4A1-12	.99	.6	1.27	12.9
M4AG1-12	.99	1.1	1.27	12.9

On M4A(G)1 cases equipped with lighted shelves, add .64 amps for each shelf.

# CHART #2

## Recommended Control Settings

<u>MODEL~</u>	<u>REFRIGERANT &amp; APPLICANT</u>		<u>LP CONTROL</u>		<u>EPR VALVE</u>	<u>THERMOSTAT (DISC AIR TEMP)</u>	
			<u>CUT-OUT</u>	<u>CUT-IN</u>		<u>CUT-OUT</u>	<u>CUT-IN</u>
M1A(G)1	R-22	- Meat	28 PSIG	54 PSIG	37#	20	24
M1A(G)1	R-502	- Meat	36 PSIG	66 PSIG	47#	20	24
M4A(G)1	R-22	- Meat	28 PSIG	54 PSIG	37#	22	26
M4A(G)1	R-502	- Meat	36 PSIG	66 PSIG	47#	22	26
M4A(G)1	R-22	- Deli	28 PSIG	54 PSIG	41#	25	29
M4A(G)1	R-502	- Deli	36 PSIG	66 PSIG	50#	25	29

<u>MODELS</u>	<u>DEFROST PERIODS FREQUENCY</u>	<u>TERMINATION (DEGREE-F)</u>			<u>FAIL SAFE SETTING (MINUTES)</u>		
		<u>AIR</u>	<u>HOT GAS</u>	<u>ELEC</u>	<u>AIR</u>	<u>HOT GAS</u>	<u>ELEC</u>
M1A(G)1	3	45	50	55	45	18	30
M4AG1	4	45	50	55	45	18	30

- NOTE: (1) A defrost termination control is installed on the coil of each case and must be wired in series with trip solenoid on the time clock.
- (2) DO NOT USE PUMP DOWN SYSTEMS WITH AIR DEFROST. On parallel compressor systems, an electric EPR valve on solenoid is required in the suction line.
- (3) Hot gas models use an adjustable defrost termination control. (M1A(G)1, M4A(G)1)

M1A(G)1 & M4A(G)1  
Parts List

<u>Description</u>	<u>M1A(G)1-8</u>	<u>M4A(G)1-8</u>	<u>M1A(G)1-12</u>	<u>M4A(G)1-12</u>	<u>Part No.</u>
Evap Fan Motor (9W Rev)	1	2	2	3	9A10-56
Evap Fan Blade (8",200P)	1		2		9B10-59
(8",300P)		2		3	9B10-43
Expansion Valve BFRE-A-C	1	1	1		3A11-51
BFRE-C-C				1	3A20-35
Defrost Control (Air Def)	1	1	1	1	8A11-26
Temp Cntrl (opt)					8A11-27
Defrost Relay (Air Def)	1	1	1	1	8E11-54
Defrost Control (Hot Gas)	1	1	1	1	8A11-27
Defrost Control (Elec)	1	1	1	1	8A11-49
Electric Defrost Safety	1	1	1	1	8A11-50
Honeycomb Grill (M4A(G)1)		2		3	13A15-29
(M1A(G)1)	2		3		13A15-12
Anti-Sweat Heater	1	1			81D10-30
(thermopane)			1	1	81D11-31
Back Rail Heater	1				10K12-62
			1		10K12-63
Honeycomb Heater		1			81D10-33
				1	81D11-32
Thermopane (Glass)	1	1			14D10-82
			1	1	14D10-83
Thermopane Cap (Glass)	1	1			55D19-35
(Glass)			1	1	55D21-27
Front Baffle (Glass)	2	2	3	3	14B10-47
Lamps (Canopy)F40T12N		2		3	10A10-22
Ballast (Canopy)2-Lamp		1		1	10D10-38
1-Lamp				1	10D10-37
Lamp Holder-Red Wires				2	10B11-49
Lamp Holder-Blue Wires				2	10B11-50
Lamp Holder-Yellow Wires				2	10B11-51

Parts List Cont.

<u>Description</u>	<u>M1A(G)1-8</u>	<u>M4A(G)1-8</u>	<u>M1A(G)1-12</u>	<u>M4A(G)1-12</u>	<u>Part No.</u>
Lamp (Shelf ea.)					10A10-22
Starter (Shelf ea.)					10J12-11
Ballast (Shelf ea.)					10D10-12
External Drain Trap	1	1	1	1	60N11-48
Deck Pans	4	4	6	6	54N18-237
Adj Wire Rack	4	4	6	6	28G19-251
Canopy Joint Trim		1		1	55P18-302
Colorband Joint Trim	1	1	1	1	55P12-375
Glass Models	1	1	1	1	55P12-373
Front Panel Joint Trim	1	1	1	1	55P10-221
Glass Models	1	1	1	1	55P10-224
M4AL1					55P10-226
Upper Front Panel	1	1			51A12-222
Glass Model	1	1			51A12-224
			1	1	51A14-173
Glass Model			1	1	51A14-175
Lower Front Panel	1	1			51A12-208
			1	1	51A14-160
Canopy Front Panel				1	51C14-68
		1			51C12-72
Kickplate (painted)			1	1	51A14-159
	1	1			51A12-207
Colorband Bright			1	1	55F14-128
(Non Glass)	1	1			55F12-150
Colorband Bright	1	1			55F12-151
(Glass)			1	1	55F14-129
Canopy/Colorband					
Insert (painted)	1	1			51A34-47
			1	1	51A34-48

RECOMMENDED PIPING PRACTICES FOR WARREN/SHERER CASES

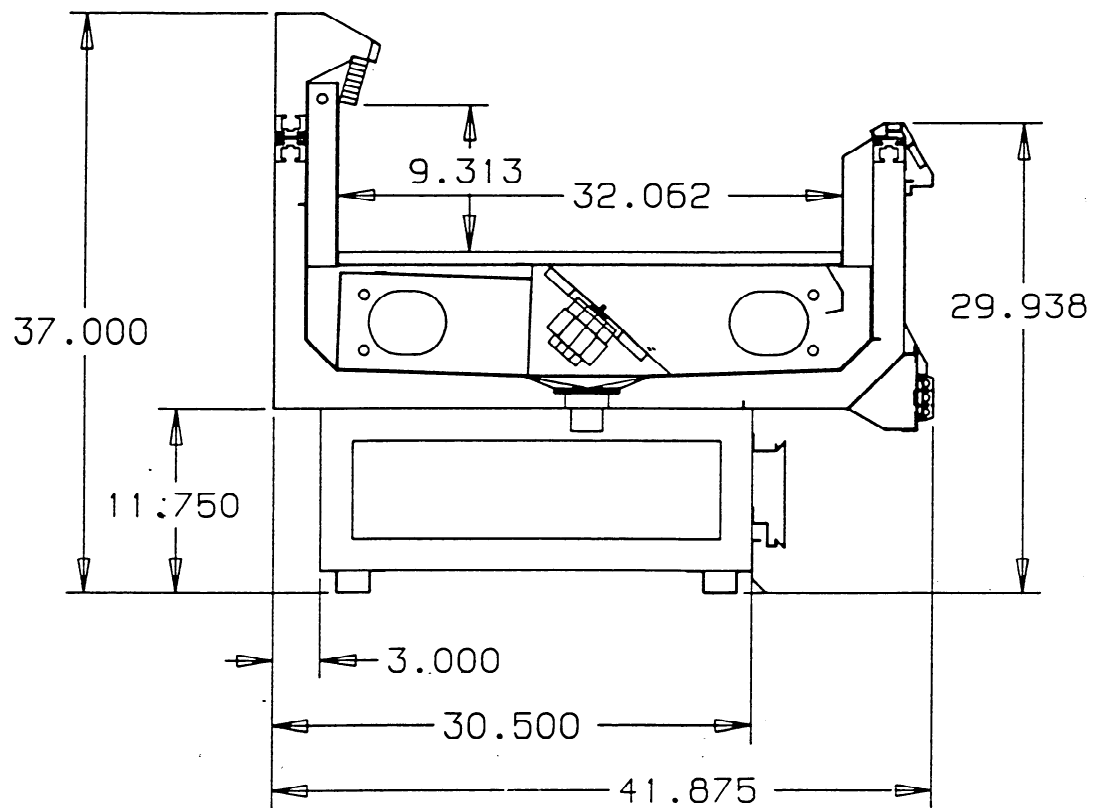
7/25/80

Revised 7/25/85

- ~1. Proper size refrigeration lines are essential to good refrigeration performance. Suction lines are more critical than liquid or discharge lines. Oversized suction lines may prevent proper oil return to the compressor. Undersized lines can rob refrigeration capacity and increase operating cost. Consult the technical manual or legend sheet for proper line sizes.
- ~2. Refrigeration lines in cases in line-ups can be reduced. However, the lines should be no smaller than the main trunk lines in at least 1/3 of the cases and no smaller than one size above the case lines to the last case. Reductions should not exceed one line size per case. It is preferred to bring the main trunk lines in at the center of line-up. Liquid lines on systems on hot gas defrost must be increased one line size above the main trunk line for the entire line-up. Individual feed lines should be at the bottom of the liquid header.
- ~3. Do not run refrigeration lines from one system through cases on another system.
- ~4. Use dry nitrogen in lines during the brazing to prevent scaling and oxidation.
- ~5. Insulate suction lines from the cases to the compressor with 3/4" wall thickness Armaflex or equal on low temperature cases to provide maximum of 65 Degree superheated gas back to the compressor and prevent condensation in exposed areas. Insulate suction lines on medium temperature cases with 1/2" thick insulation in exposed areas to prevent condensate droppage.
- ~6. Suction and liquid lines should never be taped or soldered together. Adequate heat exchanger is provided in the case.
- ~7. Refrigeration lines should never be placed in the ground unless they are protected against moisture and electrolysis attack.
- ~8. Always slope suction lines down toward the compressor, 1/2" each 10'. Do not leave dips in the line that would trap oil.
- ~9. Provide "P" traps at the bottom of suction line risers, 4' or longer. Use a double "P" trap for each 20' of risers. "P" traps should be the same size as the horizontal line. Consult the technical manual or legend sheet for proper size risers.
- 10. Use long radius ells and avoid 45 degree ells.

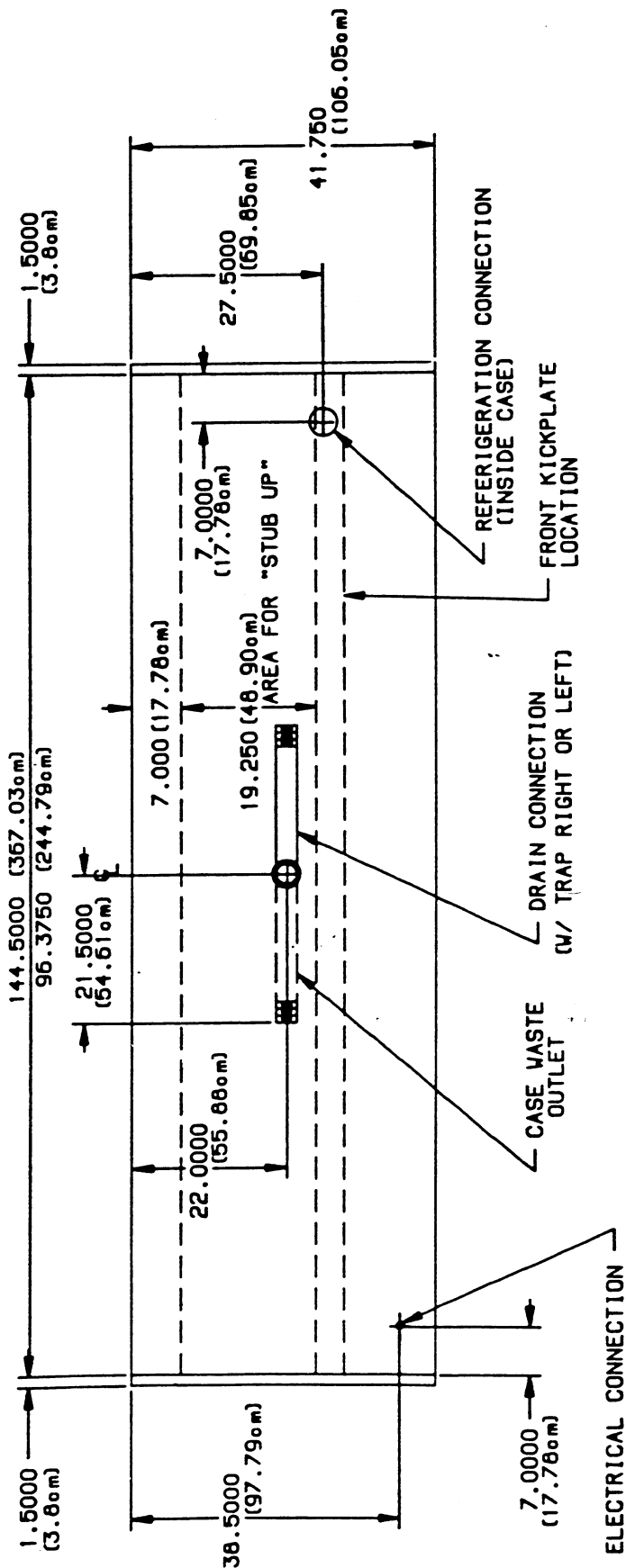
RECOMMENDED PIPING PRACTICES FOR WARREN/SHERER CASES (continued)

11. Provide expansion loops in suction lines on systems on hot gas defrost. See Engineering Bulletin #85-204-3 for detail.
12. Strap and support tubing to prevent excessive line vibration and noise.
13. Brazing of copper to copper should be with a minimum of 10% silver. Copper to brass or copper to steel should be with 45% silver.
14. Avoid the use of "bull head" tees in suction lines. An example is where suction gas enters both ends of the tee and exits the center. This can cause a substantial increase in pressure drop in the suction lines.
15. When connecting more than one suction line to a main trunk line, connect each branch line with an inverted trap.



M1A1

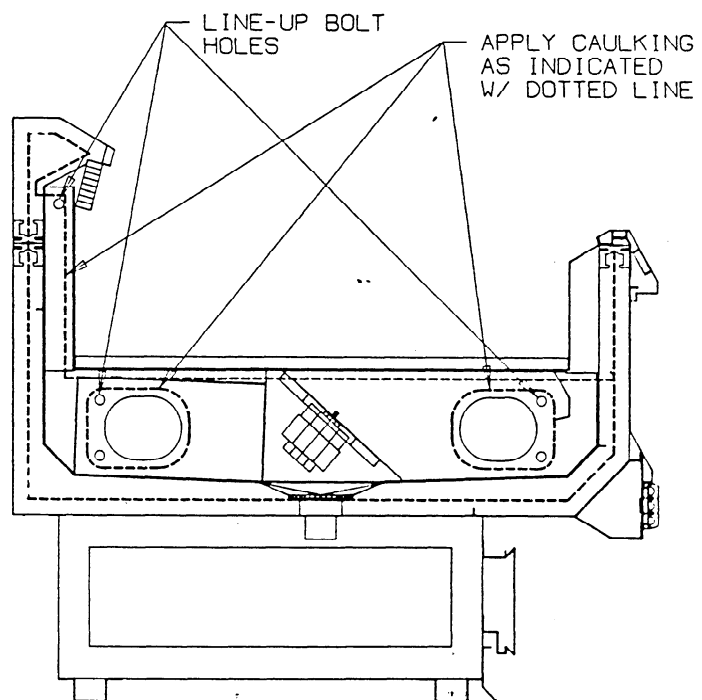
# CASE REAR



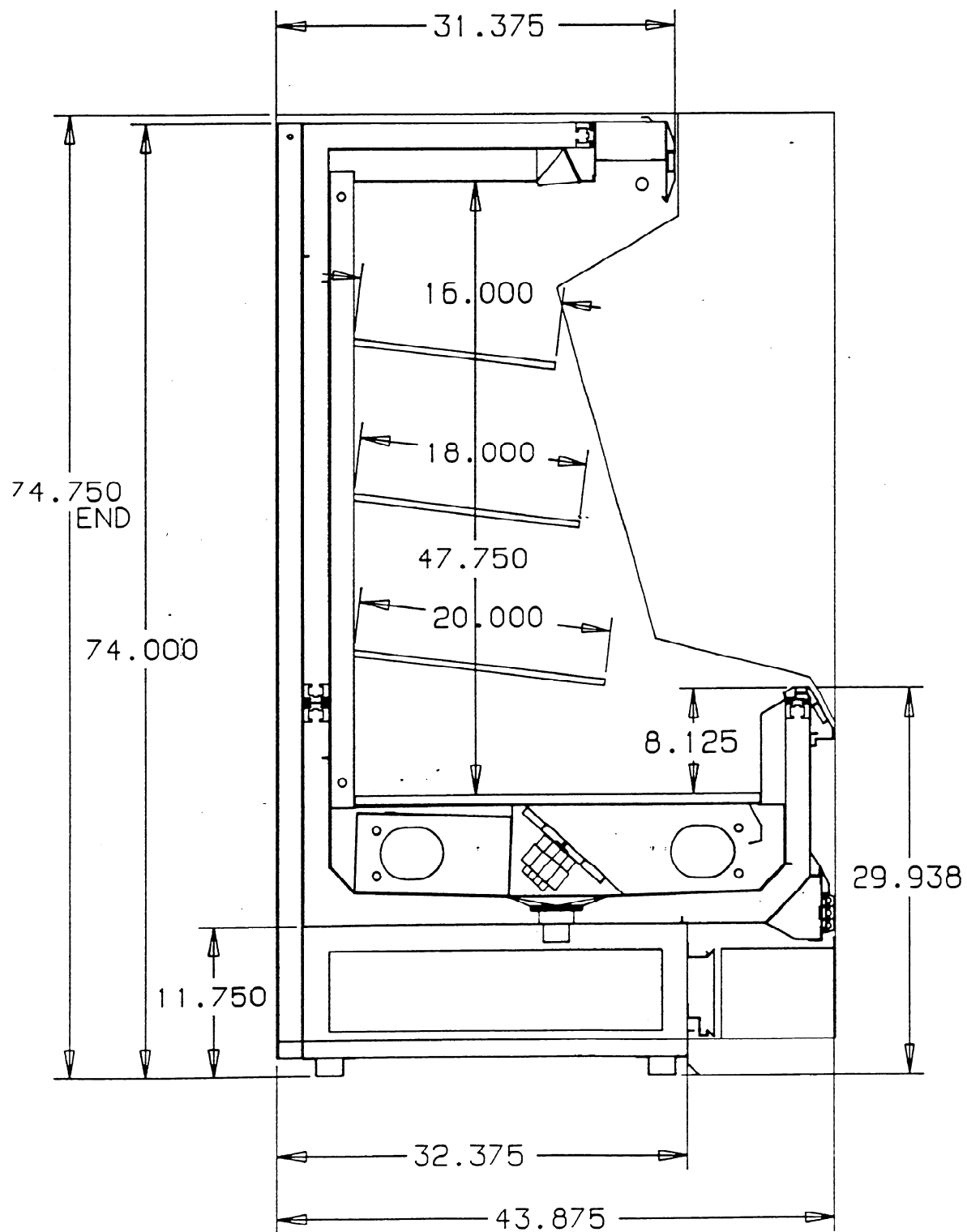
# CASE FRONT

LETTER	REVISED	DATE	BY
TITLE			
PAN VIEW - M1A1 8#12			
DATE	SCALE	DRAWN	APPROVED
10/21/98	NONE	B. LOOMBE	JB
DRAWING NUMBER		PA-30066	
WARREN / SHERER		DIVISION OF KYSSOR INDUSTRIAL CORPORATION	



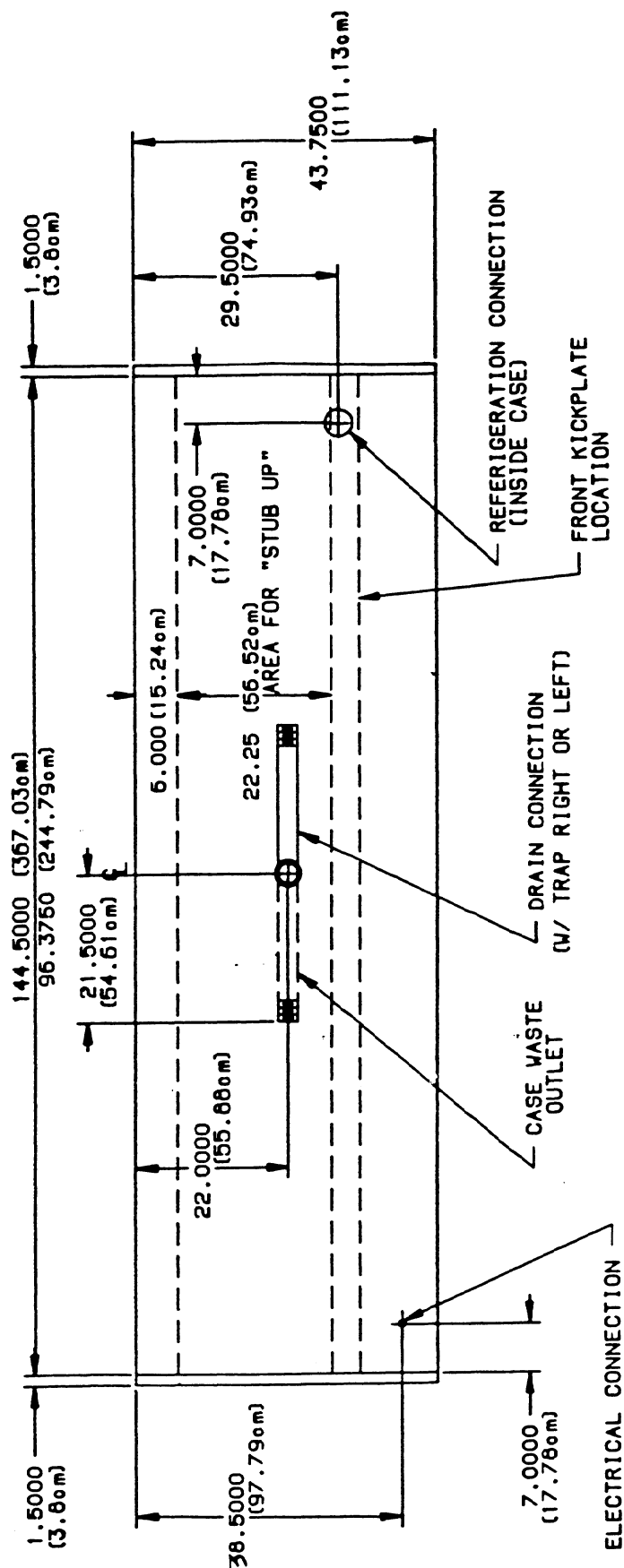


M1A1 CAULKING & LINE-UP BOLT  
DIAGRAM FOR JOINING CASES



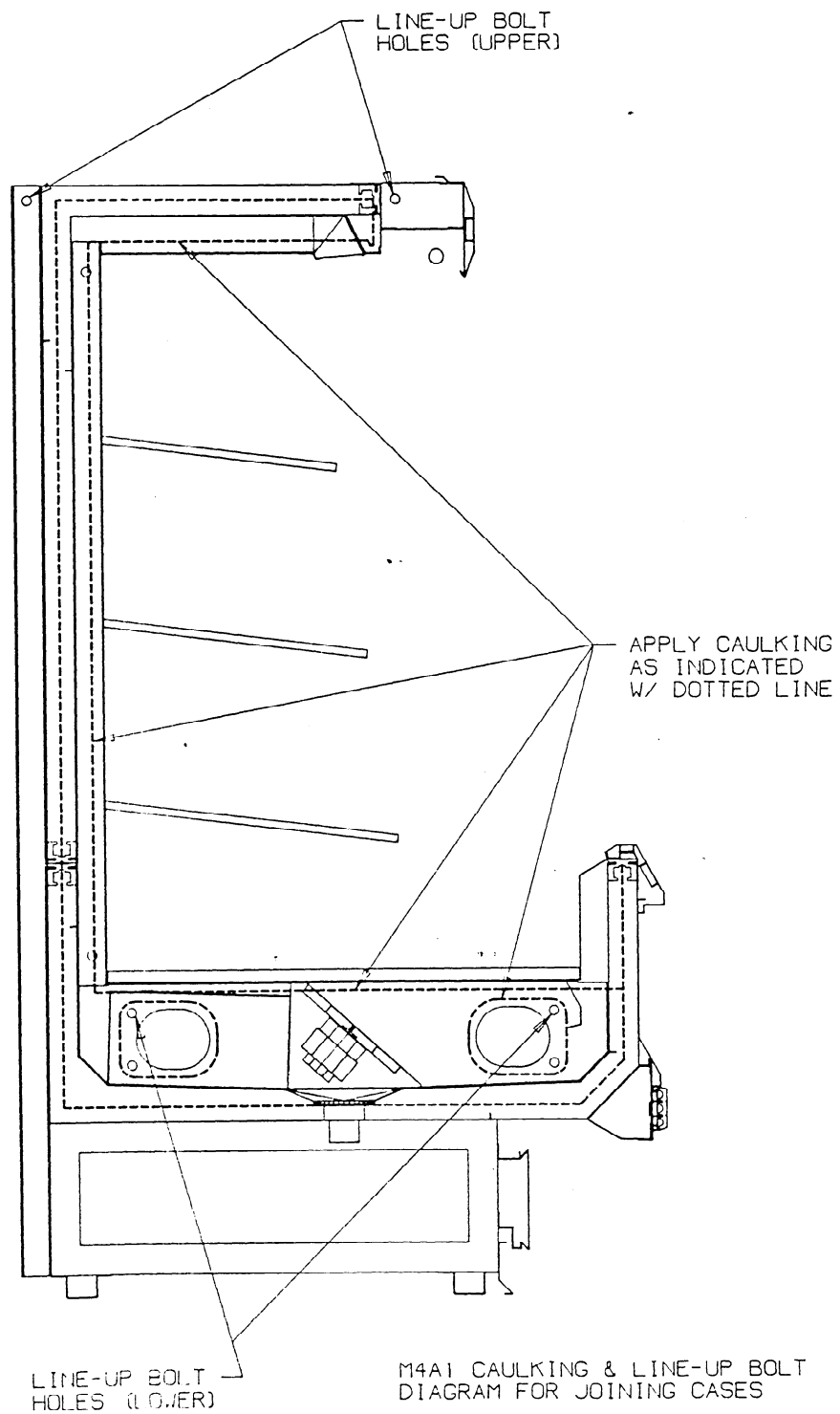
M4A1

# CASE REAR



# CASE FRONT

LETTER	REVISED	DATE	BY
TITLE			
PLAN VIEW - M41 8&12			
DATE	SCALE	DRAWN	APPROVED
10/21/88	NONE	B. TOOMBS	[Signature]
<b>WARREN / SHERER</b> DIVISION OF KYSSOR INDUSTRIAL CORPORATION			DRAWING NUMBER
			PA-30049



# Joint Kit Parts List

M1A1-M1A1

<u>Quantity</u>	<u>Description</u>	<u>Part Number</u>
4	Nut - 3/8 - 16 Hex SCP	19A15-10
4	Nut - 3/8 - Hex Head Tee	19A15-13
4	Washer - 3/8 Lock	19B13-10
4	Washer - 3/8 Cut	19B13-11
4	Bolt - 3/8 - 16 x 2	20E10-17
2	Sealant - Butyl White	29B10-28
4	Washer - Round Tee	54V10-13
8	Shim PC"A"	54X17-23
8	Shim PC"B"	54X17-24
1	Trim - Front Panel Brt	55P10-221
4	Screw #8 x 1/2 PH SD Chrome	21B11-23
1	Trim - Colorband Joint BRT	55P12-375
4	Screw #8 x 1/2 PH SD Chrome	21B11-23
1	Trim - Top Cap Joint Brt	55P13-434
2	Screw #8 x 1/2 PH SD Chrome	21B11-23

# Joint Kit Parts List

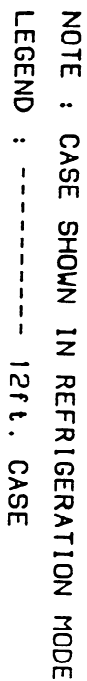
M4A1-M4A1

<u>Quantity</u>	<u>Description</u>	<u>Part Number</u>
4	Nut - 3/8 - 16 Hex SCP	19A15-10
4	Nut - 3/8 - Hex Head Tee	19A15-13
4	Washer - 3/8 Lock	19B13-10
4	Washer - 3/8 Cut	19B13-11
4	Bolt - 3/8 - 16 x 2	20E10-17
2	Sealant - Butyl White	29B10-28
4	Washer - Round Tee	54V10-13
8	Shim PC"A"	54X17-23
8	Shim PC"B"	54X17-24
1	Trim - Front Panel BRT	55P10-221
4	Screw #8 x 1/2 PH SD Chrome	21B11-23
1	Trim - Colorband Joint BRT	55P12-375
4	Screw #8 x 1/2 PH SD Chrome	21B11-23
1	Trim - Canopy Front BRT	55P18-302
2	Screw #8 - 16 x 1/2	21B12-31

# Joint Kit Parts List

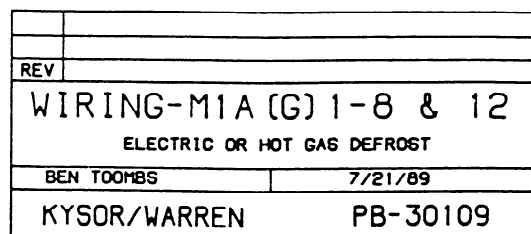
M4AL1-M4AL1

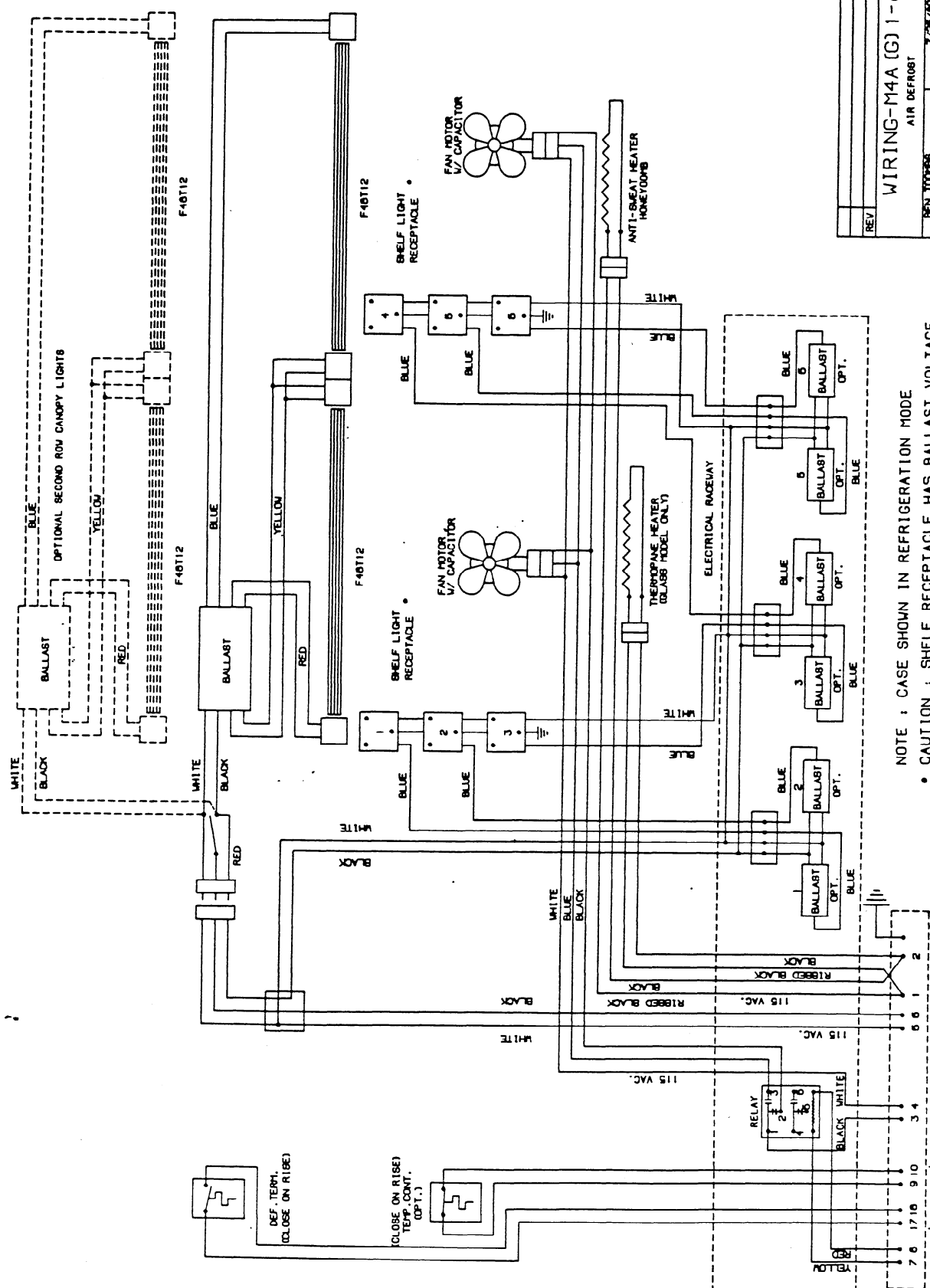
<u>Quantity</u>	<u>Description</u>	<u>Part Number</u>
4	Nut - 3/8 - 16 Hex SCP	19A15-10
4	Nut - 3/8 - Hex Head Tee	19A15-13
4	Washer - 3/8 Lock	19B13-10
4	Washer - 3/8 Cut	19B13-11
4	Bolt - 3/8 - 16 x 2	20E10-17
2	Sealant - Butyl White	29B10-28
4	Washer - Round Tee	54V10-13
8	Shim PC"A"	54X17-23
8	Shim PC"B"	54X17-24
1	Trim - Front Panel BRT	55P10-224
4	Screw #8 x 1/2 PH SD Chrome	21B11-23
1	Trim - Colorband Joint BRT	55P12-375
4	Screw #8 x 1/2 PH SD Chrome	21B11-23
1	Trim - Canopy Front BRT	55P18-302
2	Screw #8 - 16 x 1/2	21B12-31



-21-

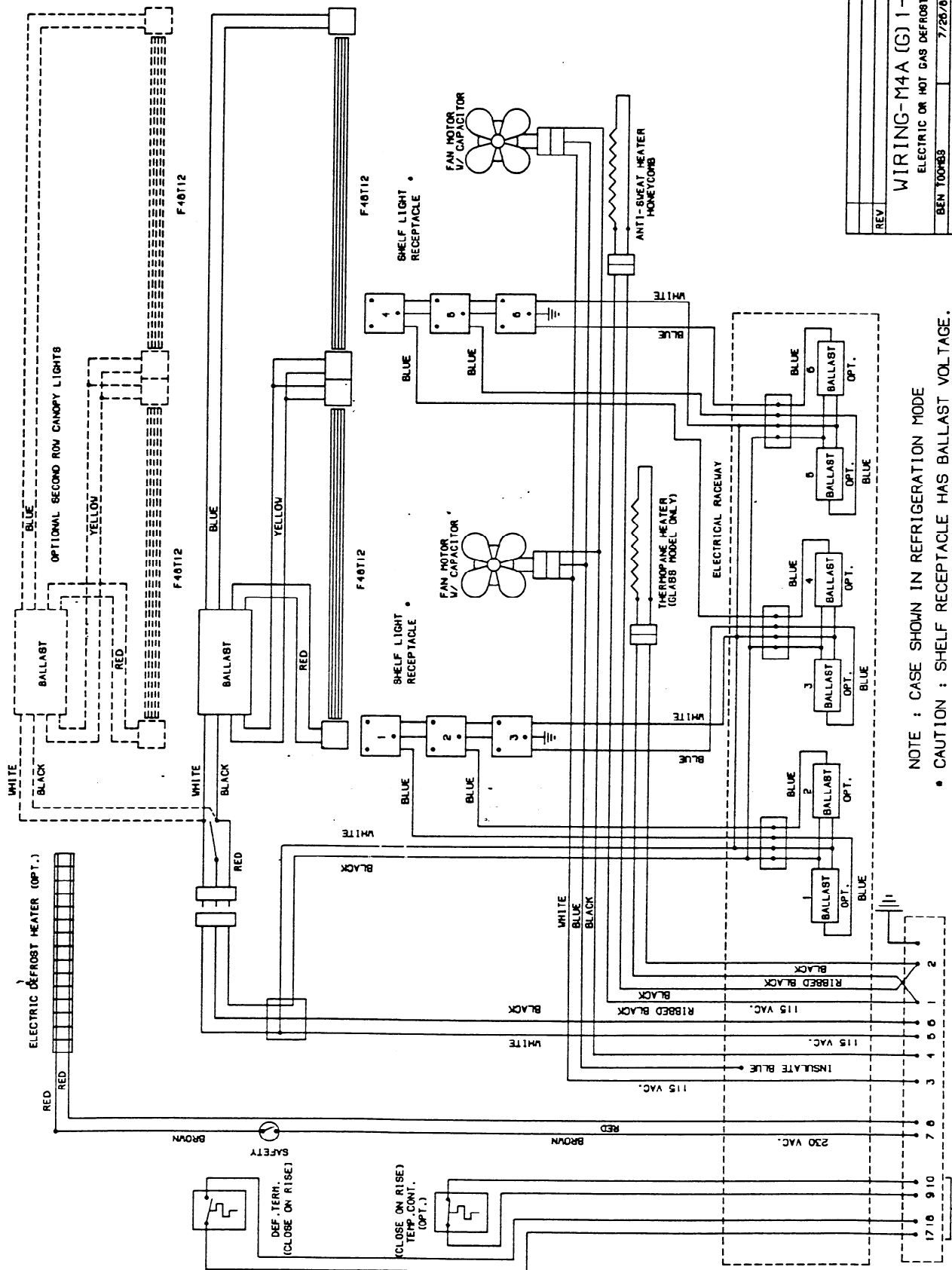


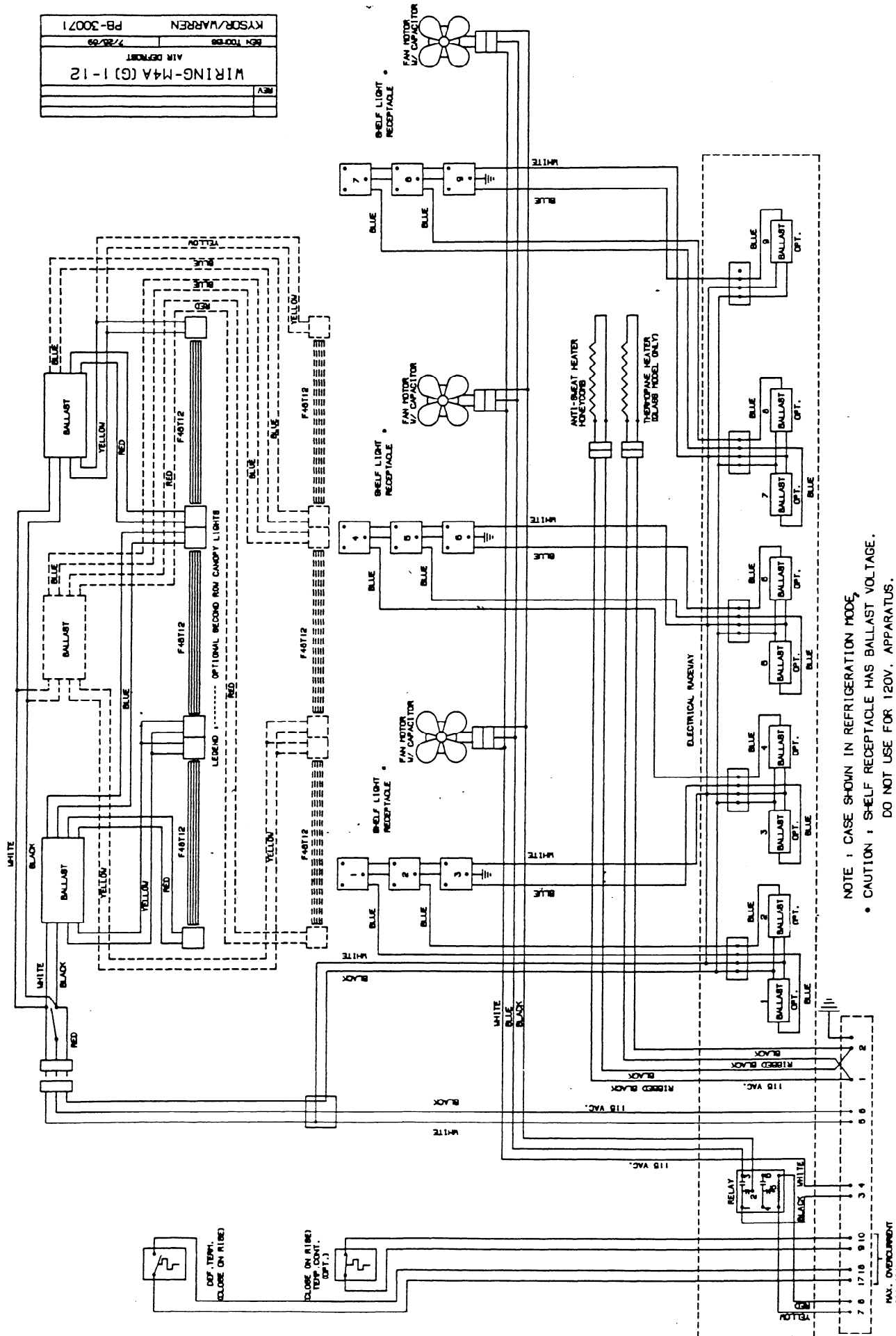


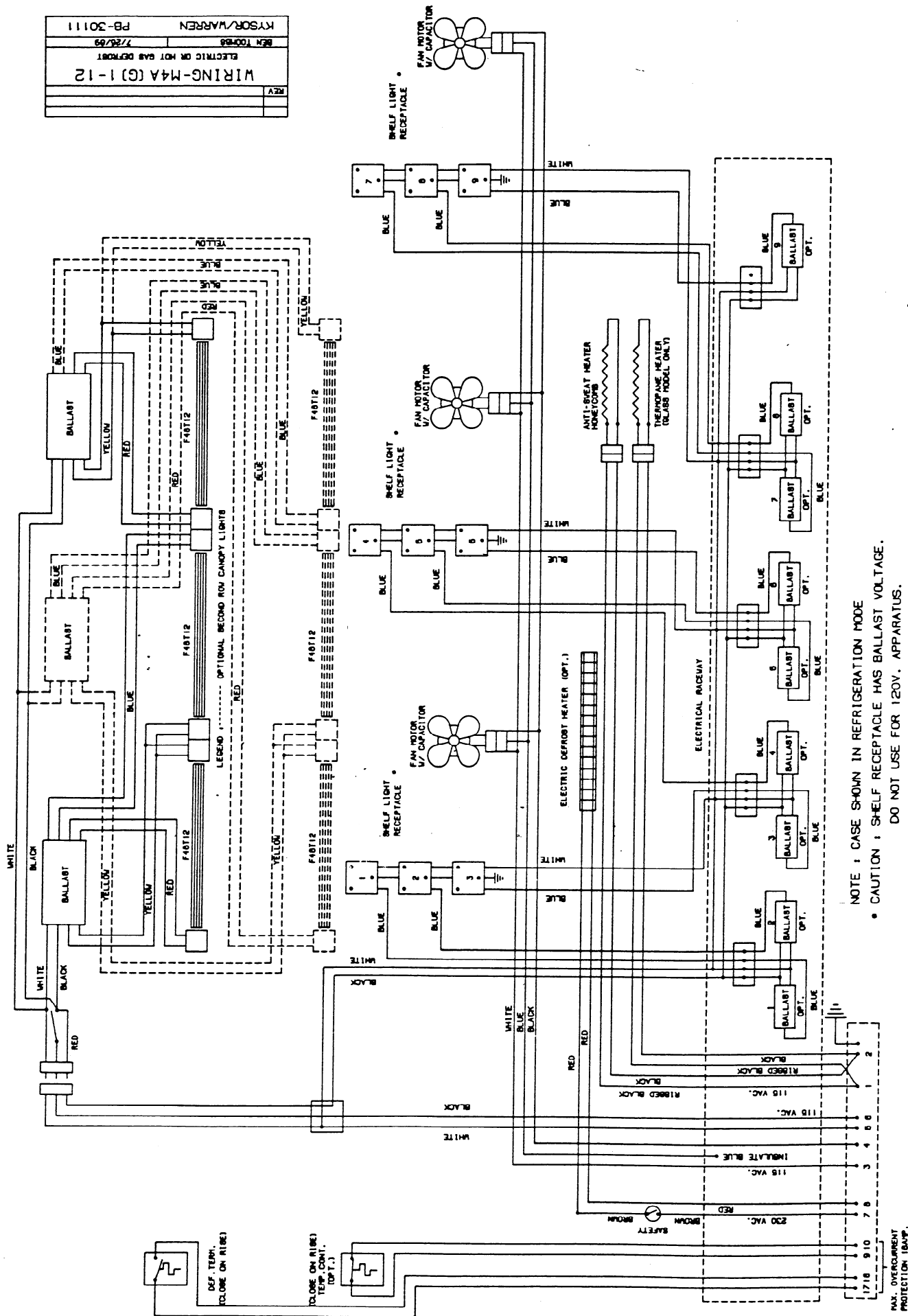


REV			
WIRING-M4A (G) 1-8			
AIR DEFROST			
BEN TOOR	88	7/28/89	
KYSOR/WARREN			
PB-30070			

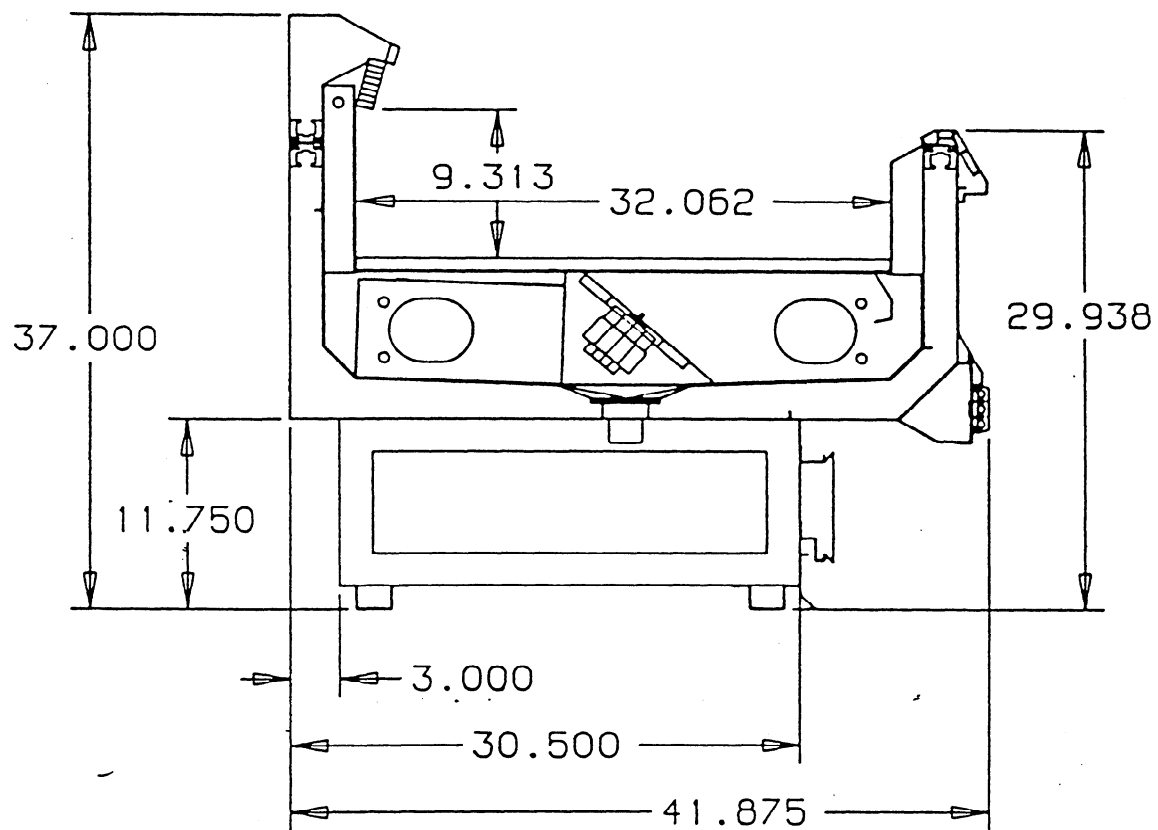
NOTE: CASE SHOWN IN REFRIGERATION MODE.  
 • CAUTION: SHELF RECEPTACLE HAS BALLAST VOLTAGE.  
 DO NOT USE FOR 120V. APPARATUS.







NOTE : CASE SHOWN IN REFRIGERATION MODE  
• CAUTION : SHLF RECEPTACLE HAS BALLAST VOLTAGE.  
DO NOT USE FOR 120V. APPARATUS.



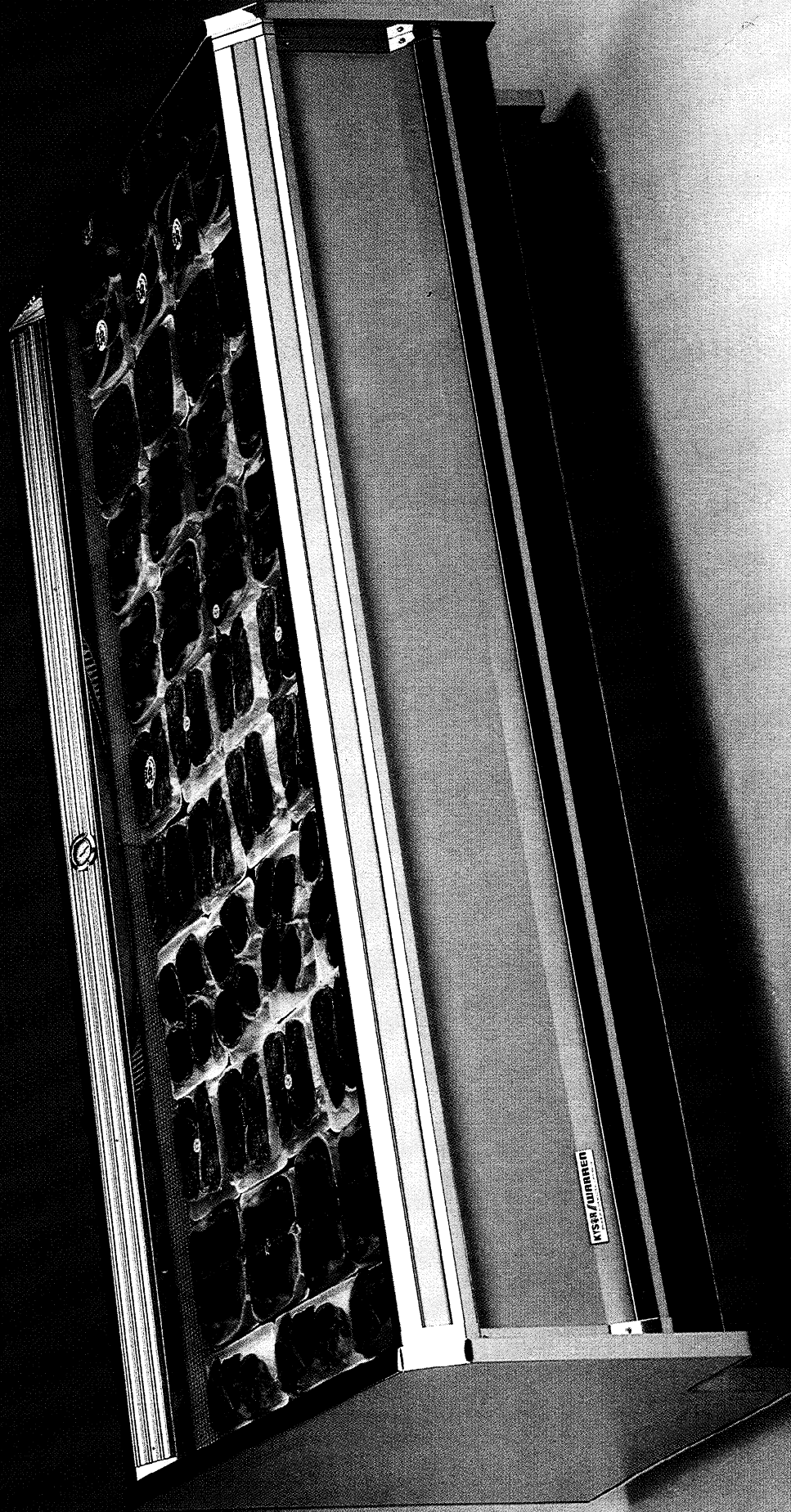
M1A1

## **SINGLE DECK MEAT MERCHANDISER**

This single deck  
merchandise features  
superb product visibility  
from any angle. Its low

profile front rail and  
wide display bed make  
this one of our most  
popular models.

Model  
**M1A1**



**KYSOR / WARREN**

# SINGLE DECK MEAT MERCHANDISER

Models  
M1A1  
M1AG1 Glass Front  
M1AG1 High Front Glass

The M1A1 is a beautifully efficient profit center. This sleek, low profile single deck meat case offers the ultimate in refrigerated merchandising technology and features the patented Kysor/Warren Air Defrost® cooling system. Products are displayed at their mouth watering finest while product freshness and shelf life are extended to new dimensions.

## TECHNICAL DATA

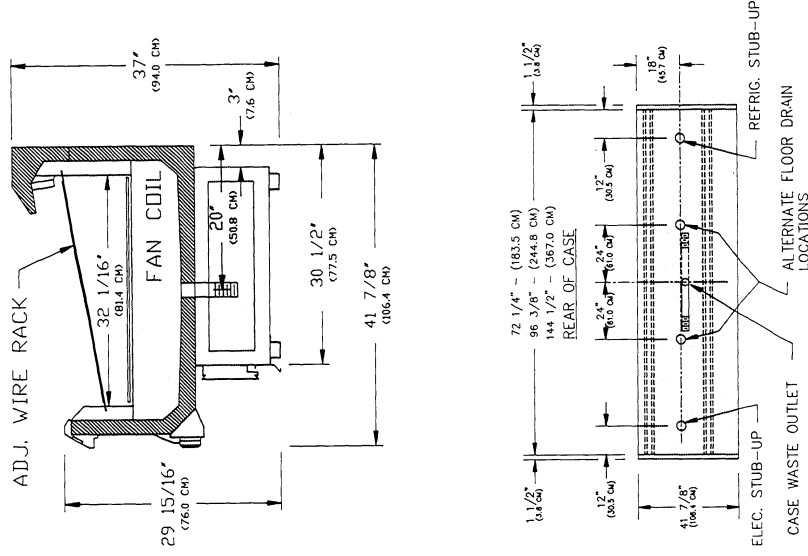
	6 Foot	8 Foot	12 Foot
	M1A1	M1A1	M1A1
	M1AG1	M1AG1	M1AG1
		M1AHG1*	M1AHG1*
CAPACITIES:			
Cubic Capacity	12.5	16.7	25.0
Cubic Capacity		20.2*	30.4*
DIMENSIONS:			
Length W/O Ends	6'1/4"	8'3/8"	12'1/2"
Thickness-Pair Ends	3"	3"	3"

## FEATURES

- Matches the M4A1 meat-dei! merchandiser for uniformity in common lineups
- Finishes utilizing stylish and exclusive COLORAMICS
- Foamed-in-place urethane insulation throughout for uniform cooling efficiency
- Long life, low maintenance, bottom mounted, aluminum-finned, copper-tubed coils allows easy access for cleaning and sanitation
- Patented AIR DEFROST® refrigeration system provides longer product shelf life by reducing the temperature variations that produce food shock and costly rewraups
- All case line-ups prealigned at factory for easy installation
- Trim and rubrail positioned to reduce cart damage
- Hinged fan plenum
- Epoxy coated wire racks
- Aluminum bottom liner
- 1/2" drain-exterior trap

## OPTIONS

- Thermostatic controls
- End protector kit for exposed ends
- Stainless steel kickplates
- Joint kits for continuous line-ups
- Gas or electric defrost system
- Ring for service bell
- Shelf type canopies
- Vinyl finishes on case front, ends and color band



THIS FIXTURE IS RECOMMENDED FOR OPERATION IN STORES MAINTAINING 75°F/55% RELATIVE HUMIDITY. KYSOR/WARREN WHOSE POLICY IS ONE OF CONTINUOUS IMPROVEMENT, RESERVES THE RIGHT TO CHANGE AT ANYTIME, SPECIFICATIONS, DESIGN, OR PRICES WITHOUT INCURRING OBLIGATION.

Dual-Jet and Air Defrost are Registered Trademarks of the Kysor/Warren Corporation.  
M1A15M489RP

## KYSOR/WARREN

A DIVISION OF KYSOR INDUSTRIAL CORPORATION  
1600 Industrial Boulevard-Conyers, Georgia 30207-0019 (404) 483-5600  
5201 Transport Boulevard-Columbus, Georgia 31907

**KYSOR // WARREN**



# MODEL M1A1

Cubic Capacity    8' - 16.7    12' - 25

Anti-Sweat Wattage    8' - 81    12' - 151

Where are these heaters located?

Number of Fans    8' - 1    12' - 2

What type light is standard    N/A

Standard ballast location    N/A

Types of Defrost available

**Air is Standard  
Electric & Hot Gas Optional.**

Number of Defrosts required    3/Day

Suction Temperature    +15 degrees F

BTU Requirements per foot    520

Coil size

**8' - 88.5"L x 6"W x 32 tubes  
12' - 136.5"L x 6"W x 32 tubes**

Case location

**Bottom Tub & Top Ceiling**

# MODEL M1A1

Wire rack colors standard **White**

On single deck type cases, what  
will be standard material  
on exterior back **Galvanized**  
Options? **Painted**

Is air discharge honeycomb  
removable for cleaning **Yes**

Moisture proof  
electrical connections **Yes**

What type expansion valve  
is standard **BFRG-A-C**

Will heat exchangers be standard **Yes**

Location of thermostat **Behind lower front panel**  
Will kickplates be designed  
for return air **Yes**

## **MODEL M1A1**

Raise up fan plenums	<b>Yes</b>
Metal Thickness on outer panels	<b>.033</b>
Drain Size	<b>1-1/2" External Trap</b>
Bottom Liner Material	<b>.028 Alum.</b>
Other Interior Materials:	
Back Panels	<b>.030 Galv.</b>
Ceiling Panels	<b>N/A</b>
Painting Methods	<b>White dip primer</b>
	<b>Electrostatic top coat</b>
Available Shelves (Size & Qty.)	<b>N/A</b>
Can case be self-contained	<b>No</b>
Case lengths available	<b>8' and 12'</b>
Nose light available	<b>No</b>
What type thermometer will be available	<b>Dial or Rod</b>
Method of mounting	<b>Dial - Flush/Rod - Brkt</b>
Location of mount	<b>Top Cap</b>