



**Case Length (ft)**

**General Case Data**

	4'	6'	8'	12'
Total Display Area (ft <sup>2</sup> )	13.20	19.70	26.30	39.40
Cubic Capacity (ft <sup>3</sup> )	29.90	44.80	59.80	89.60
Max Shelf Depth (in) [Top/Bottom]	20/22	20/22	20/22	20/22
Weight (lb)	-	-	-	-

**Thermal Load (General)**

Discharge Air Velocity (fpm)	200-250	200-250	200-250	200-250
Fan Speed (rpm)	N / A	N / A	N / A	N / A
Discharge Air Temp (°F)	31	31	31	31
Conventional Thermal Load, Single (Btuh) with one row of canopy T8	4909	7351	9806	14702
Parallel Thermal Load, Single (Btuh) with one row of canopy T8	4887	7351	9784	14680
Additional Btuh per ft LED - Canopy / Shelf & Nose	13 / 11	13 / 11	13 / 11	13 / 11
Additional Btuh per ft T8	19	19	19	19

**Thermal Load (HFC)**

Evaporator Temperature (°F)	26	26	26	26
Superheat Setpoint (°F)	6 - 8	6 - 8	6 - 8	6 - 8
Estimated Refrigerant Charge (lbs)	1.621	2.865	3.657	5.651

**Thermal Load (Glycol)**

Supply Temperature (°F)	20	20	20	20
Flow (GPM)	QTE	QTE	QTE	QTE
Fluid %	35	35	35	35
Pressure Drop (PSID)	QTE	QTE	QTE	QTE

**Electrical Data (Amps/Watts)**

<i>115V/60Hz, 1 Phase</i>				
Fans	0.25	0.28	0.50	0.42
<i>Canopy Lights (per row)</i>				
GE LED	0.19	0.28	0.37	0.56
T8	0.24	0.43	0.47	0.71
<i>Shelf Lights (per row)</i>				
GE LED	0.06	0.09	0.12	0.19
T8	0.24	0.43	0.47	0.71

**Defrost Data (Off Cycle)**

Defrosts per Day	Failsafe Duration (min) <sup>1</sup>	Termination Temp (°F)	Drip Time (min)
6	20	48	0

<sup>1</sup> At ASHRAE conditions. For conditions above 75F, 55% RH, increase defrost time by 15 min.

Type I refrigerator, intended for use in an area where the environmental conditions are controlled and maintained that conditions do not exceed 75°F and 55% relative humidity.

Heatcraft Worldwide Refrigeration, whose policy is one of continuous improvement, reserves the right to change at any time specifications, designs, or prices without incurring obligation.

QTE = available only with a quote to engineering

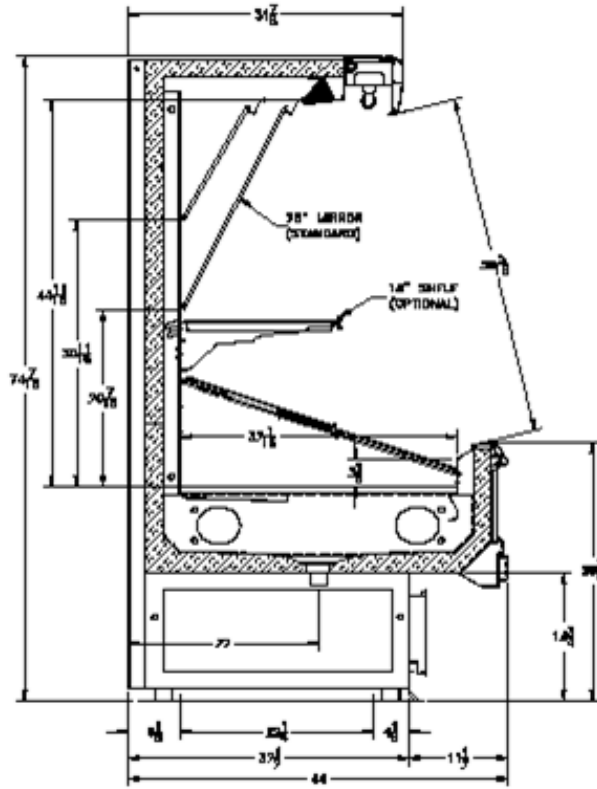
DOE 2017 Compliant



The above case model has case lengths that are UL and NSF approved.

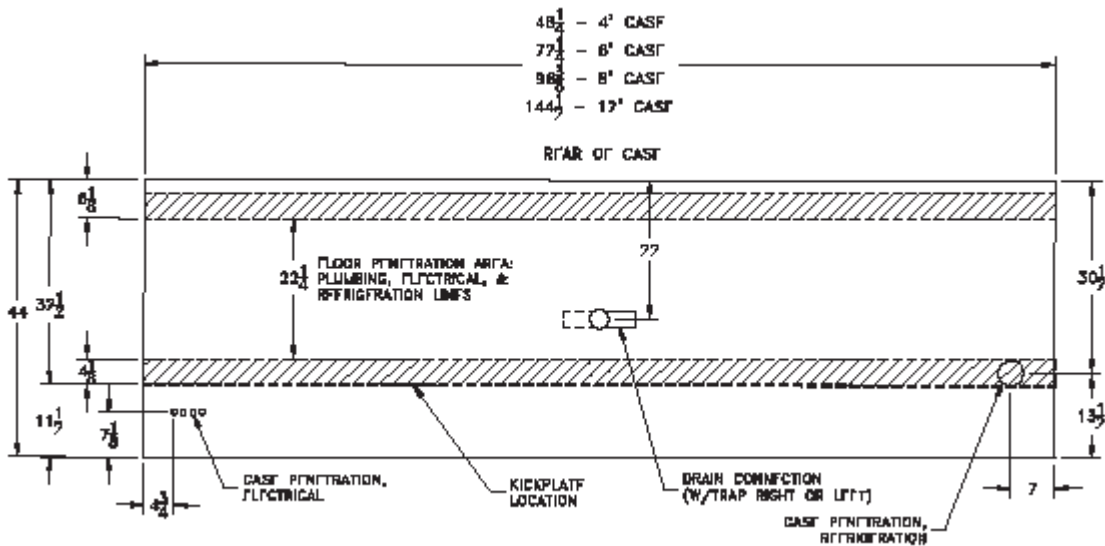


### QHZVP Cross View



Add 3" thickness for a pair of ends.

### QHZVP Plan View



5201 Transport Blvd. • Columbus, GA 31907  
 P: 800.866.5596 • F: 706.568.8990  
 kysorwarren.com



A Proud Partner of: