

RX5SL -- STRATUS Multi-Deck

Issue Date: 11/16/2012



Capacities

Doors	Facing Area (FT ²)	Cubic Capacity (FT ³)
2	22.2	54.6
3	33.2	81.9
4	44.3	109.2
5	55.4	136.5

Refrigeration Data

Application	BTUH per Door - LED Lights		Evap. Temp.	Discharge Air	
	ECM Fan			Temp.	Velocity (1 hr. after defrost)
	Parallel	Conventional			
Ice Cream	1147	1169	-18°F	-11°F	175 - 225 FPM
Frozen Food	1050	1069	-11°F	-4°F	175 - 225 FPM

Electrical Data

Doors	ECM Fan Data		LED Lights		Anti-Sweat	Drain Heater	Electric Defrost Heater (208V)
			Optimax Pro Low Power	Quanta StarFire	Eliminator		
	Fan Qty	Amps	Amps	Amps	Amps	Amps	Amps
2	2	0.42	0.26	0.56	1.55	0.12	6.73
3	3	0.63	0.38	0.82	2.26	0.3	10.1
4	4	0.84	0.51	1.08	2.98	0.24	13.46
5	5	1.05	0.63	1.34	3.69	0.42	16.83

Anthony 101 doors for export outside of US only. Not available in the US.

Defrost Data

Defrost	Per Day	Fail Safe	Termination
Electric	1	45 min	55°F
Hot Gas	1	30 min	65°F

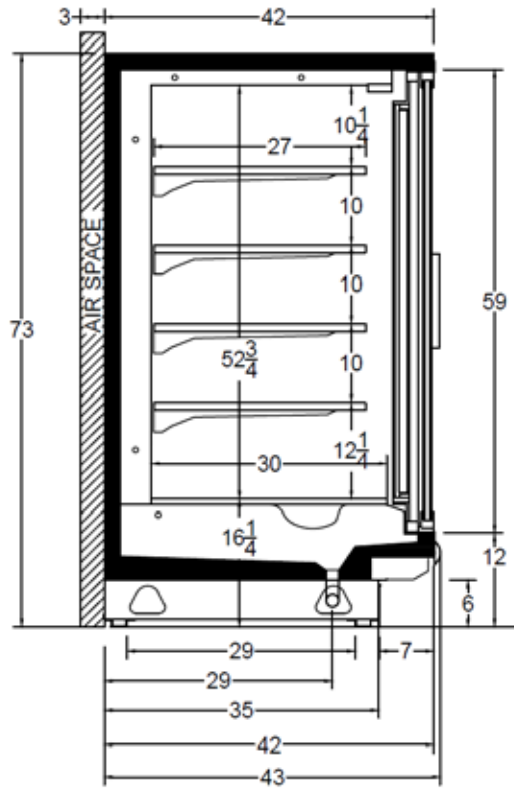
Type I refrigerator, intended for use in an area where the environmental conditions are controlled and maintained that conditions do not exceed 75°F and 55% relative humidity. Heatcraft Worldwide Refrigeration, whose policy is one of continuous improvement, reserves the right to change at any time specifications, designs, or prices without incurring obligation.



The above case model has case lengths that are UL and NSF approved.



RX5SL Cross View



Add 3" thickness for a pair of ends.

RX5SL Plan View

