







ISSUE DATE: SEPTEMBER 2018



DN7HN - STRATUS

MULTI-DECK SPECIFICATION SHEET



KYSOR WARREN
epta refrigeration

Case Length (ft)					APPLICATIONS	
General Case Data	4'	6'	8'	12'		
Total Display Area (ft ²)	18.05	27.09	36.09	54.19		
Cubic Capacity (ft ³)	41.01	61.42	81.92	122.84		
Max Shelf Depth (in) [Top/Bottom]	18/20	18/20	18/20	18/20		
Weight (lb)	-	-	-	-		
Refrigeration Data (General)						
Discharge Air Velocity (fpm)	200-300	200-300	200-300	200-300		
Fan Speed (rpm)	1900	1900	1900	1900		
Discharge Air Temp (°F)	33	33	33	33		
Conventional Thermal Load, Single (Btuh) one row of canopy LED	5657	8492	11314	16985		
Parallel Thermal Load, Single (Btuh) one row of canopy LED	5236	7861	10473	15723		
Additional Btuh per ft LED - Canopy / Shelf & Nose	13 / 11	13 / 11	13 / 11	13 / 11		
Refrigeration Data (HFC)						
Evaporator Temperature (°F)	26	26	26	26		
Superheat Setpoint (°F)	6 - 8	6 - 8	6 - 8	6 - 8		
Estimated Refrigerant Charge (lbs)	2.554	3.818	5.109	7.637		
Refrigeration Data (Glycol)						
Supply Temperature (°F)	20	20	20	20		
Flow (GPM)	QTE	QTE	QTE	QTE		
Fluid %	35	35	35	35		
Pressure Drop (PSID)	QTE	QTE	QTE	QTE		
Electrical Data (Amps/Watts)						
115V/60Hz, 1 Phase						
Fans	0.29	0.59	0.59	1.17		
Canopy Lights (Per row)						
GE LED	0.22	0.33	0.44	0.67		
Shelf Lights (Per row)						
GE LED	0.08	0.10	0.15	0.23		
Defrost Data (off Cycle)						
Defrosts per Day	Failsafe Duration (min) ¹	Termination Temp (°F)	Drip Time (min)			
6	18	47	0			
1 At ASHRAE conditions. For conditions above 75°F, 55% RH, increase defrost time by 15 min. Type I refrigerator, intended for use in an area where the environmental conditions are controlled and maintained that conditions do not exceed 75°F and 55% relative humidity. Kysor Warren, whose policy is one of continuous improvement, reserves the right to change at any time specifications, designs, or prices without incurring obligation. DOE 2017 Compliant						



ANSI / NSF 7

The above case model has case lengths that are UL and NSF approved.

¹ At ASHRAE conditions. For conditions above 75°F, 55% RH, increase defrost time by 15 min. Type I refrigerator, intended for use in an area where the environmental conditions are controlled and maintained that conditions do not exceed 75°F and 55% relative humidity. Kysor Warren, whose policy is one of continuous improvement, reserves the right to change at any time specifications, designs, or prices without incurring obligation. DOE 2017 Compliant

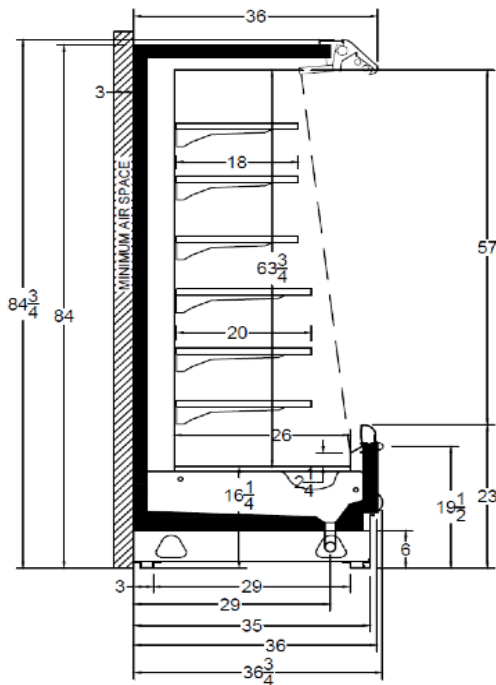


The above case model has case lengths that are UL and NSF approved.

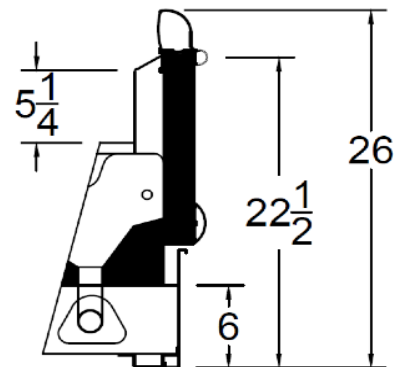
DN7HN - STRATUS

MULTI-DECK SPECIFICATION SHEET

DN7XN CROSS VIEW



DN7HN CROSS VIEW



Add 3" thickness for a pair of ends.

DN7HN PLAN VIEW

