







ISSUE DATE: SEPTEMBER 2018

DN7HN - STRATUS

MULTI-DECK SPECIFICATION SHEET



KYSOR WARREN
epta refrigeration

| Case Length (ft) | | | | | APPLICATIONS | |
|--|--------------------------------------|-----------------------|-----------------|---------|---|---|
| General Case Data | 4' | 6' | 8' | 12' | | |
| Total Display Area (ft ²) | 18.05 | 27.09 | 36.09 | 54.19 |  | |
| Cubic Capacity (ft ³) | 41.01 | 61.42 | 81.92 | 122.84 | | |
| Max Shelf Depth (in) [Top/Bottom] | 18/20 | 18/20 | 18/20 | 18/20 | | |
| Weight (lb) | - | - | - | - | | |
| Refrigeration Data (General) | | | | | |  |
| Discharge Air Velocity (fpm) | 200-300 | 200-300 | 200-300 | 200-300 | | |
| Fan Speed (rpm) | 1900 | 1900 | 1900 | 1900 | | |
| Discharge Air Temp (°F) | 33 | 33 | 33 | 33 | | |
| Conventional Thermal Load, Single (Btuh) one row of canopy LED | 5657 | 8492 | 11314 | 16985 | | |
| Parallel Thermal Load, Single (Btuh) one row of canopy LED | 5236 | 7861 | 10473 | 15723 | | |
| Additional Btuh per ft LED - Canopy / Shelf & Nose | 13 / 11 | 13 / 11 | 13 / 11 | 13 / 11 |  | |
| Refrigeration Data (HFC) | | | | | | |
| Evaporator Temperature (°F) | 26 | 26 | 26 | 26 | | |
| Superheat Setpoint (°F) | 6 - 8 | 6 - 8 | 6 - 8 | 6 - 8 | | |
| Estimated Refrigerant Charge (lbs) | 2.554 | 3.818 | 5.109 | 7.637 | | |
| Refrigeration Data (Glycol) | | | | | | |
| Supply Temperature (°F) | 20 | 20 | 20 | 20 |  | |
| Flow (GPM) | QTE | QTE | QTE | QTE | | |
| Fluid % | 35 | 35 | 35 | 35 | | |
| Pressure Drop (PSID) | QTE | QTE | QTE | QTE | | |
| Electrical Data (Amps/Watts) | | | | | | |
| 115V/60Hz, 1 Phase | | | | | | |
| Fans | 0.29 | 0.59 | 0.59 | 1.17 |  | |
| Canopy Lights (Per row) | | | | | | |
| GE LED | 0.22 | 0.33 | 0.44 | 0.67 | | |
| Shelf Lights (Per row) | | | | | | |
| GE LED | 0.08 | 0.10 | 0.15 | 0.23 | | |
| Defrost Data (off Cycle) | | | | | | |
| Defrosts per Day | Failsafe Duration (min) ¹ | Termination Temp (°F) | Drip Time (min) | | | |
| 6 | 18 | 47 | 0 | | | |
| <p>1 At ASHRAE conditions. For conditions above 75°F, 55% RH, increase defrost time by 15 min. Type I refrigerator, intended for use in an area where the environmental conditions are controlled and maintained that conditions do not exceed 75°F and 55% relative humidity. Kysor Warren, whose policy is one of continuous improvement, reserves the right to change at any time specifications, designs, or prices without incurring obligation. DOE 2017 Compliant</p> | | | | | | |
| <div><div><p>CLASSIFIED C EPH US</p><p>ANSI / NSF 7</p></div><div><p>The above case model has case lengths that are UL and NSF approved.</p></div></div> | | | | | | |

¹ At ASHRAE conditions. For conditions above 75°F, 55% RH, increase defrost time by 15 min. Type I refrigerator, intended for use in an area where the environmental conditions are controlled and maintained that conditions do not exceed 75°F and 55% relative humidity. Kysor Warren, whose policy is one of continuous improvement, reserves the right to change at any time specifications, designs, or prices without incurring obligation. DOE 2017 Compliant

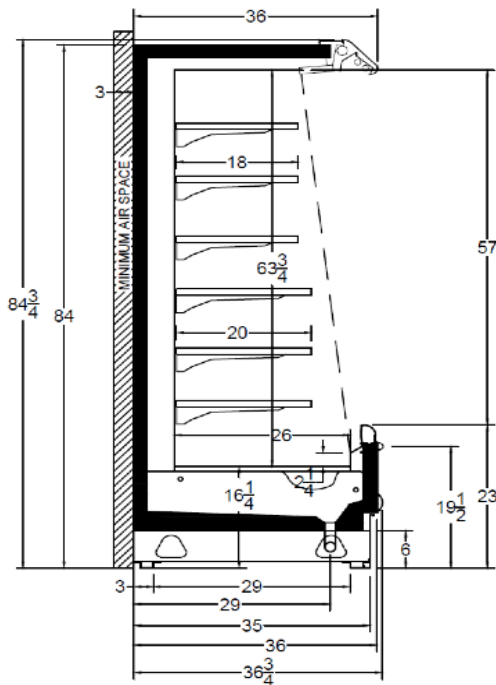


The above case model has case lengths that are UL and NSF approved.

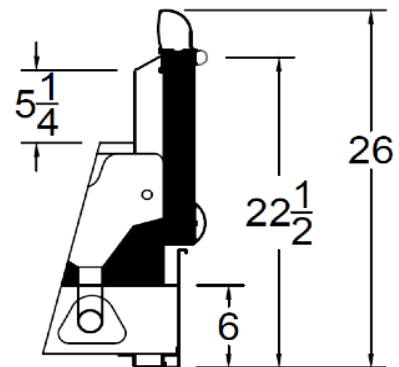
DN7HN - STRATUS

MULTI-DECK SPECIFICATION SHEET

DN7XN CROSS VIEW



DN7HN CROSS VIEW



Add 3" thickness for a pair of ends.

DN7HN PLAN VIEW

