

ISSUE DATE: MARCH 2022

DN8LD - FULL GLASS DOOR MULTI-DECK SPECIFICATION SHEET



KYSOR WARREN
eptarefrigeration

General Case Data	Case Length (ft)		
	4'	8'	12'
Total Display Area (ft ²)	20.55	41.09	61.69
Cubic Capacity (ft ³)	49.63	99.26	149.02
Max Shelf Depth (in) [Top/Bottom]	18/18	18/18	18/18
Weight (lb)	-	-	-
Refrigeration Data (General)			
Discharge Air Velocity (fpm)	185	185	185
Fan Speed (rpm)	1400	1400	1300
Discharge Air Temp (°F)	36	36	36
Conventional Thermal Load, Single (Btuh)	938	1875	2813
Parallel Thermal Load, Single (Btuh)	828	1655	2483
Refrigeration Data (HFC)			
Evaporator Temperature (°F)	28	28	28
Superheat Setpoint (°F)	6 - 8	6 - 8	6 - 8
Estimated Refrigerant Charge (lbs)	0.489	1.048	1.569
Refrigeration Data (Glycol)			
Supply Temperature (°F)	20	20	20
Flow (GPM)	0.245	0.49	0.736
Fluid %	35	35	35
Pressure Drop (PSID)	0.40	0.40	0.90
Electrical Data (Amps/Watts)			
115V/60Hz, 1 Phase			
Fans	0.17	0.33	0.60

Defrost Data (F ff Cycle)			
Defrosts per Day	Failsafe Duration (min) ¹	Termination Temp (°F)	Drip Time (min)
3	60	47	0

¹ At ASHRAE conditions. For conditions above 75°F, 55% RH, increase defrost time by 15 min. Type I refrigerator, intended for use in an area where the environmental conditions are controlled and maintained that conditions do not exceed 75°F and 55% relative humidity. Kysor Warren, whose policy is one of continuous improvement, reserves the right to change at any time specifications, designs, or prices without incurring obligation. DOE 2017 Compliant

APPLICATIONS



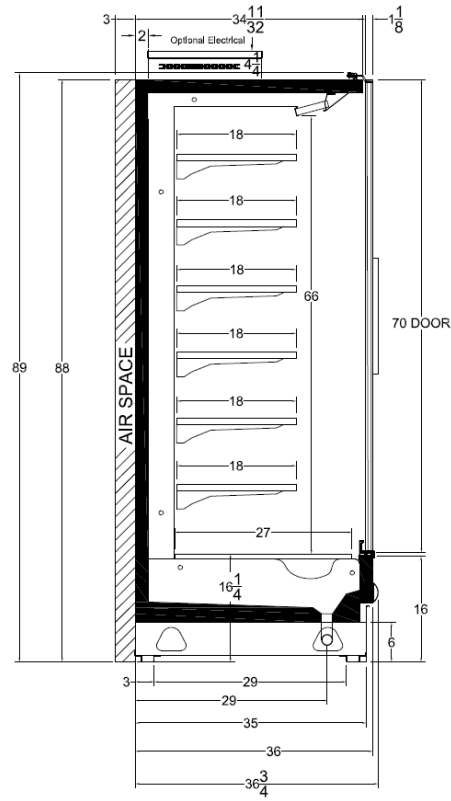
ANSI / NSF 7

The above case model has case lengths that are UL and NSF approved.

DN8LD - FULL GLASS DOOR

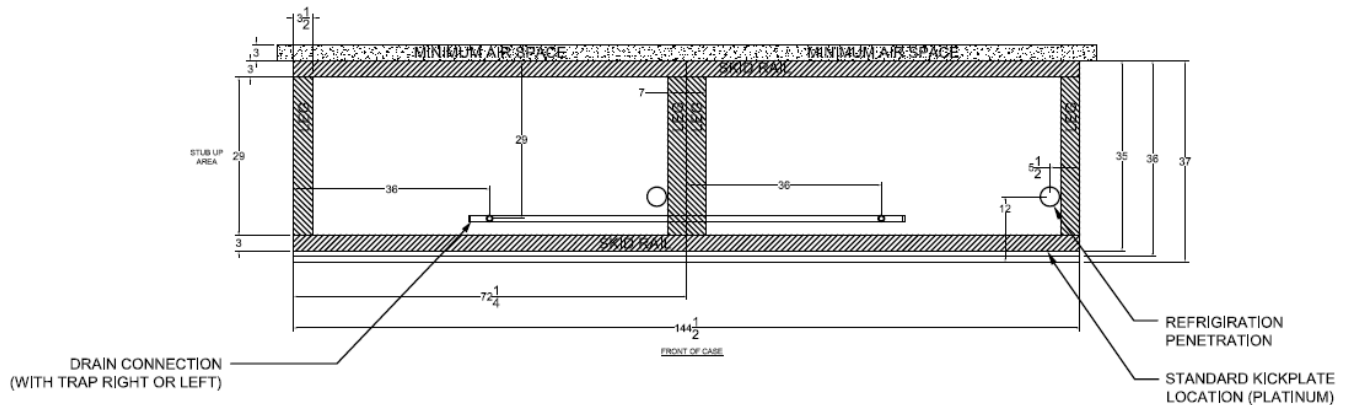
MULTI-DECK SPECIFICATION SHEET

DN8LD CROSS VIEW



Add 3" thickness for a pair of ends.

DN8LD PLAN VIEW



12 - FEET

FRONT OF CASE

5201 Transport Blvd
Columbus, GA 31907

P: 800.866.5596 • F: 706.568.8990



www.kysorwarren.com



KYSOR WARREN