

ISSUE DATE: JULY 2018

# DR6LD - STRATUS

## MULTI-DECK SPECIFICATION SHEET



General Case Data	Case Length (ft)	
	8'	12'
Total Display Area (ft <sup>2</sup> )	37.94	56.96
Cubic Capacity (ft <sup>3</sup> )	89.88	134.93
Max Shelf Depth (in) [Top/Bottom]	22/22	22/22
Weight (lb)	-	-
Refrigeration Data (General)		
Discharge Air Velocity (fpm)	185	185
Fan Speed (rpm)	1400	1400
Discharge Air Temp (°F)	32	32
Conventional Thermal Load, Single (Btuh)	1603	2405
Parallel Thermal Load, Single (Btuh)	1490	2235
Refrigeration Data (HFC)		
Evaporator Temperature (°F)	28	28
Superheat Setpoint (°F)	6 - 8	6 - 8
Estimated Refrigerant Charge (lbs)	2.532	3.799
Refrigeration Data (Glycol)		
Supply Temperature (°F)	20	20
Flow (GPM)	QTE	QTE
Fluid %	35	35
Pressure Drop (PSID)	QTE	QTE
Electrical Data (Amps/Watts)		
115V/60Hz, 1 Phase		
Fans	0.30	0.61

Defrost Data (off Cycle)			
Defrosts per Day	Failsafe Duration (min) <sup>1</sup>	Termination Temp (°F)	Drip Time (min)
3	35	47	0

*1 At ASHRAE conditions. For conditions above 75°F, 55% RH, increase defrost time by 15 min. Type I refrigerator, intended for use in an area where the environmental conditions are controlled and maintained that conditions do not exceed 75°F and 55% relative humidity. Kysor Warren whose policy is one of continuous improvement, reserves the right to change at any time specifications, designs, or prices without incurring obligation. DOE 2017 Compliant*

### APPLICATIONS

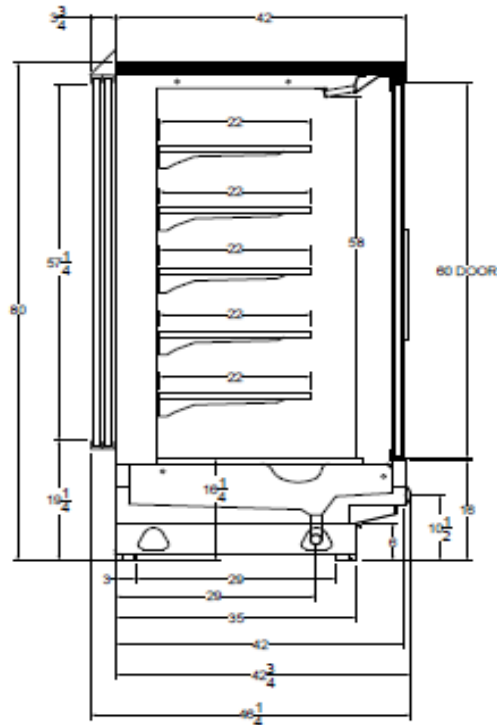


The above case model has case lengths that are UL and NSF approved.

# DR6LD - STRATUS

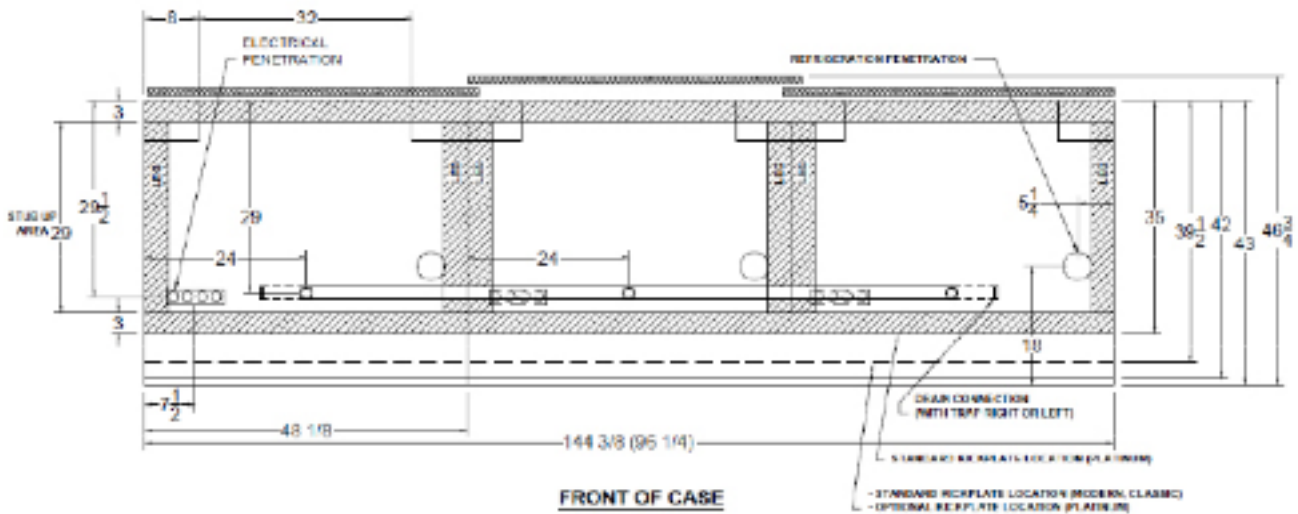
## MULTI-DECK SPECIFICATION SHEET

### DR6LD CROSS VIEW



Add 3" thickness for a pair of ends.

### DR6LD PLAN VIEW



5201 Transport Blvd  
Columbus, GA 31907  
P: 800.866.5596 • F: 706.568.8990



[www.kysorwarren.com](http://www.kysorwarren.com)



**KYSOR WARREN**