

# DX6LD - FULL GLASS DOOR

## MULTI-DECK SPECIFICATION SHEET



General Case Data	Case Length (ft)				APPLICATIONS
	4'	6'	8'	12'	
Total Display Area (ft <sup>2</sup> )	18.41	27.65	36.83	55.29	
Cubic Capacity (ft <sup>3</sup> )	44.94	67.47	89.88	134.93	
Max Shelf Depth (in) [Top/Bottom]	22/22	22/22	22/22	22/22	
Weight (lb)	-	-	-	-	
<b>Refrigeration Data (General)</b>					
Discharge Air Velocity (fpm)	185	185	185	185	
Fan Speed (rpm)	1300	1300	1300	1300	
Discharge Air Temp (°F)	36	36	36	36	
Conventional Thermal Load, Single (Btuh)	730	1094	1459	2189	
Parallel Thermal Load, Single (Btuh)	644	969	1288	1932	
<b>Refrigeration Data (HFC)</b>					
Evaporator Temperature (°F)	28	28	28	28	
Superheat Setpoint (°F)	6 - 8	6 - 8	6 - 8	6 - 8	
Estimated Refrigerant Charge (lbs)	0.489	0.732	1.048	1.569	
<b>Refrigeration Data (Glycol)</b>					
Supply Temperature (°F)	QTE	QTE	QTE	QTE	
Flow (GPM)	QTE	QTE	QTE	QTE	
Fluid %	35	35	35	35	
Pressure Drop (PSID)	QTE	QTE	QTE	QTE	
<b>Electrical Data (Amps/Watts)</b>					
115V/60Hz, 1 Phase					
Fans	0.15	0.30	0.30	0.45	
<b>LED</b>					
Light Amps	0.21	0.31	0.42	0.63	

Defrost Data (off Cycle)			
Defrosts per Day	Failsafe Duration (min) <sup>1</sup>	Termination Temp (°F)	Drip Time (min)
3	60	47	0

<sup>1</sup> At ASHRAE conditions. For conditions above 75°F, 55% RH, increase defrost time by 15 min. Type I refrigerator, intended for use in an area where the environmental conditions are controlled and maintained that conditions do not exceed 75°F and 55% relative humidity. Kysor Warren, whose policy is one of continuous improvement, reserves the right to change at any time specifications, designs, or prices without incurring obligation. DOE 2017 Compliant

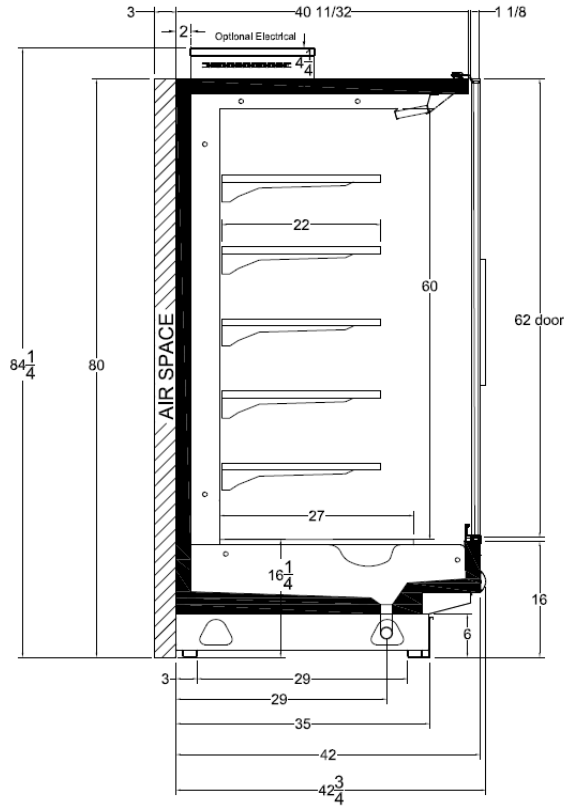


ANSI / NSF 7  
The above case model has case lengths that are UL and NSF approved.

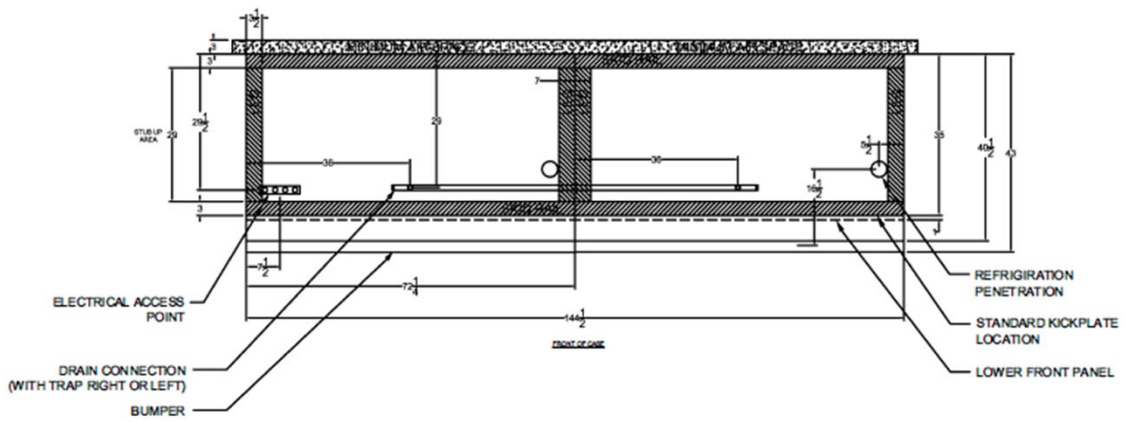
# DX6LD - FULL GLASS DOOR

## MULTI-DECK SPECIFICATION SHEET

**DX6LD CROSS VIEW**



**DX6LD PLAN VIEW**



5201 Transport Blvd  
 Columbus, GA 31907  
 P: 800.866.5596 • F: 706.568.8990



[www.kysorwarren.com](http://www.kysorwarren.com)



**KYSOR WARREN**  
 eptarefrigeration