

ISSUE DATE: SEPTEMBER 2018

DX6LN-MCU

SINGLE DECK MERCHANDISER



KYSOR WARREN
epta refrigeration

General Case Data	Case Length (ft)		
	6'	8'	12'
Total Display Area (ft ²)	28.10	37.40	56.20
Cubic Capacity (ft ³)	71.60	96.50	143.20
Max Shelf Depth (in) [Top/Bottom]	22/22	22/22	22/22
Weight (lb)	-	-	-
Thermal Load (General)			
Evaporator Temperature (°F)	22	22	22
Discharge Air Temp (°F)	35	35	35
Discharge Air Velocity (fpm)	200-300	200-300	200-300
Fan Speed (rpm)	2200	2200	2200
Refrigerant Type	R-448A	R-448A	R-448A
Estimated Refrigerant Charge (lbs)	TBD	TBD	TBD
Conventional Thermal Load, Single (Btuh) unlighted	8007	10676	16014
Superheat Setpoint (°F)	6 - 8	6 - 8	6 - 8
Electrical Data (Amps/Watts)			
Power Supply (Volts/Hertz/Phase)	208V/60HZ/1PH 115V/60HZ/1PH	208V/60HZ/1PH 115V/60HZ/1PH	208V/60HZ/1PH 115V/60HZ/1PH
Evaporator Fan Motor Amps (115 V)	0.60	0.60	0.90
Anti-sweat Heater Amps (115 V)	N / A	N / A	N / A
Lights Amps (115V)	0.43	0.47	0.71
Defrost Heater Amps	N / A	N / A	N / A
Condensate Pump Amps (115 V)	1.90	1.90	1.90
Condensate Pan Heater Amps	7.21	14.42	14.42
Compressor RLA	12.00	15.70	23.20
Condenser Fan Motor Amps	2.20	2.20	2.20
Refrigeration Cycle Amps	2.03	2.12	2.69
Defrost Cycle Amps	2.03	2.12	2.69
Case Circuit Minimum Circuit Ampacity	2.54	2.65	3.36
Case Circuit Maximum Overcurrent Protection	15	15	15
Condensing Unit Minimum Circuit Ampacity	17.20	21.83	31.20
Case Circuit Maximum Overcurrent Protection	25	35	50

Defrost Data (Electric)

Defrosts per Day	Failsafe Duration (min) ¹	Termination Temp (°F)	Drip Time (min)
6	25	47	0

¹ At ASHRAE conditions. For conditions above 75°F, 55% RH, increase defrost time by 15 min. Type I refrigerator, intended for use in an area where the environmental conditions are controlled and maintained that conditions do not exceed 75°F and 55% relative humidity. Kysor Warren, whose policy is one of continuous improvement, reserves the right to change at any time specifications, designs, or prices without incurring obligation. DOE 2017 Compliant

APPLICATIONS



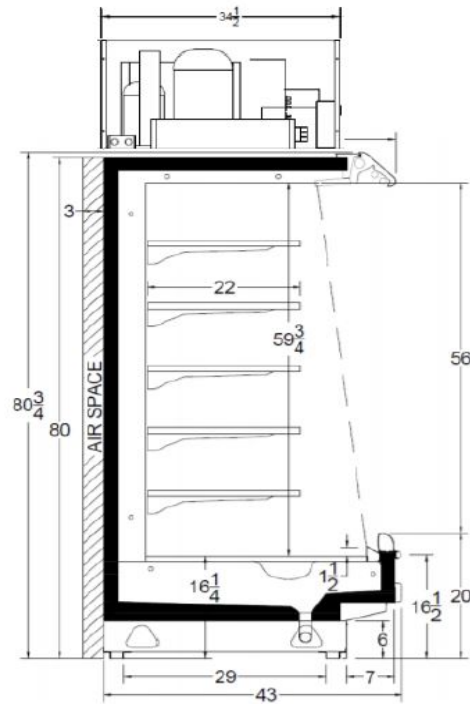
ANSI / NSF 7

The above case model has case lengths that are UL and NSF approved.

DX6LN-MCU

SINGLE DECK MERCHANDISER

DX6LN CROSS VIEW



Add 3" thickness for a pair of ends.

DX6LN PLAN VIEW

