

DX7LD - FULL GLASS DOOR

MULTI-DECK SPECIFICATION SHEET





KYSOR WARREN
eptarefrigeration

Case Length (ft)					APPLICATIONS
General Case Data	4'	6'	8'	12'	
Total Display Area (ft ²)	19.75	29.65	39.50	59.31	
Cubic Capacity (ft ³)	47.84	71.83	95.69	143.65	
Max Shelf Depth (in) [Top/Bottom]	22/22	22/22	22/22	22/22	
Weight (lb)	-	-	-	-	
Refrigeration Data (General)					
Discharge Air Velocity (fpm)	185	185	185	185	
Fan Speed (rpm)	1400	1300	1400	1300	
Discharge Air Temp (°F)	36	36	36	36	
Conventional Thermal Load, Single (Btuh)	834	1250	1667	2501	
Parallel Thermal Load, Single (Btuh)	735	1106	1470	2205	
Refrigeration Data (HFC)					
Evaporator Temperature (°F)	28	28	28	28	
Superheat Setpoint (°F)	6 - 8	6 - 8	6 - 8	6 - 8	
Estimated Refrigerant Charge (lbs)	0.489	0.732	1.048	1.569	
Refrigeration Data (Glycol)					
Supply Temperature (°F)	QTE	QTE	QTE	QTE	
Flow (GPM)	QTE	QTE	QTE	QTE	
Fluid %	35	35	35	35	
Pressure Drop (PSID)	QTE	QTE	QTE	QTE	
Electrical Data (Amps/Watts)					
115V/60Hz, 1 Phase					
Fans	0.17	0.30	0.33	0.60	
LED					
Light Amps	0.21	0.31	0.42	0.63	

Defrost Data (off Cycle)			
Defrosts per Day	Failsafe Duration (min) ¹	Termination Temp (°F)	Drip Time (min)
3	60	47	0

1 At ASHRAE conditions. For conditions above 75°F, 55% RH, increase defrost time by 15 min. Type I refrigerator, intended for use in an area where the environmental conditions are controlled and maintained that conditions do not exceed 75°F and 55% relative humidity. Kysor Warren, whose policy is one of continuous improvement, reserves the right to change at any time specifications, designs, or prices without incurring obligation. DOE 2017 Compliant



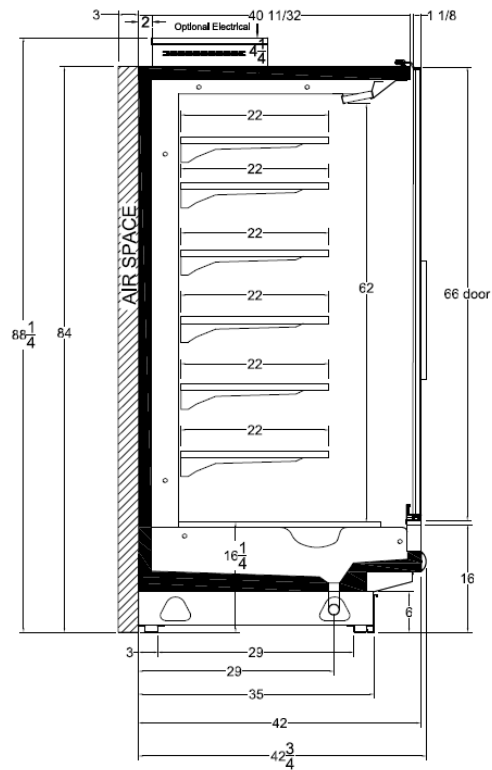
ANSI / NSF 7

The above case model has case lengths that are UL and NSF approved.

DX7LD - FULL GLASS DOOR

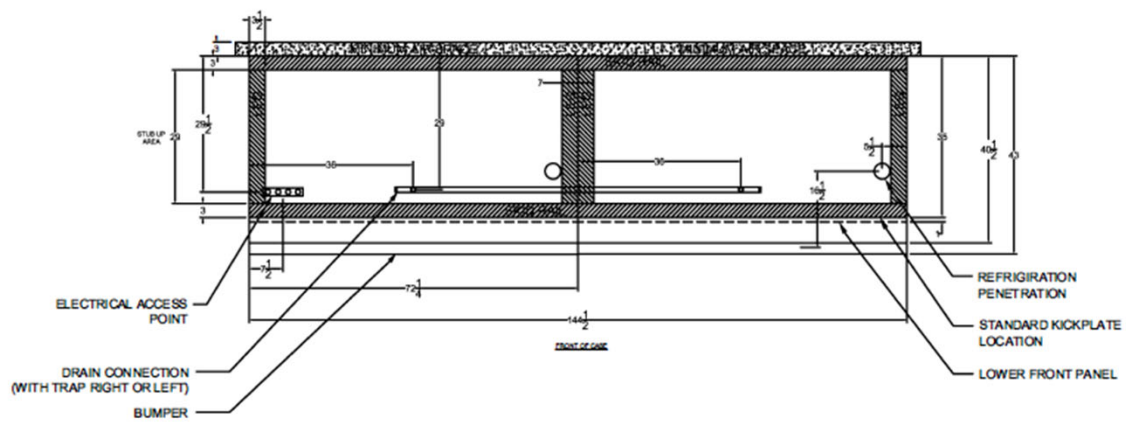
MULTI-DECK SPECIFICATION SHEET

DX7LD CROSS VIEW



Add 3" thickness for a pair of ends.

DX7LD PLAN VIEW



5201 Transport Blvd
Columbus, GA 31907
P: 800.866.5596 • F: 706.568.8990



www.kysorwarren.com



KYSOR WARREN
eptarefrigeration