

ISSUE DATE: SEPTEMBER 2018

MX1LC-SC

REACH-IN MERCHANDISER



KYSOR WARREN
epta refrigeration

General Case Data	Case Length (ft)		
	4'	6'	8'
Total Display Area (ft ²)	11.36	17.06	22.72
Cubic Capacity (ft ³)	5.12	7.70	10.24
Max Shelf Depth (in) [Top/Bottom]	N/A	N/A	N/A
Weight (lb)	-	-	-
Refrigeration Load (General)			
Evaporator Temperature (°F)	20	20	20
Discharge Air Temp (°F)	26	26	26
Discharge Air Velocity (fpm)	250-300	250-300	250-300
Fan Speed (rpm)	1100	1100	1100
Refrigerant Type	R-513A	R-513A	R-513A
Refrigerant Charge (lbs)	3.30	3.70	4.70
Conventional Thermal Load, Single (Btuh) unlighted	2172	3258	4344
Additional Btuh per ft LED - Canopy / Shelf & Nose	13 / 11	13 / 11	13 / 11
Additional Btuh per ft T8	19	19	19
Superheat Setpoint (°F)	6 - 8	6 - 8	6 - 8
Electrical Data (Amps/Watts)			
Power Supply (Volts/Hz/Phase)	115V/60HZ/1PH	208V/60HZ/1PH	208V/60HZ/1PH
Evaporator Fan Motor Amps (115 V)	0.09	0.18	0.18
Anti-sweat Heater Amps (115 V)	0.10	0.16	0.22
Lights Amps (115V)	N/A	N/A	N/A
Defrost Heater Amps	N/A	N/A	N/A
Condensate Pump Amps (115 V)	N/A	N/A	N/A
Condensate Pan Heater Amps	8.33	4.80	7.21
Compressor RLA	9.30	8.00	8.00
Compressor LRA	50.00	46.00	46.00
Condenser Fan Motor Amps	0.53	0.54	0.54
Refrigeration Cycle Amps	18.35	13.68	16.15
Defrost Cycle Amps	8.52	5.14	7.61
Minimum Circuit Ampacity	20.70	15.72	18.21
Maximum Overcurrent Protection	25	25	25

APPLICATIONS



Defrost Data (off Cycle)			
Defrosts per Day	Failsafe Duration (min) ¹	Termination Temp (°F)	Drip Time (min)
6	60	45 (Coil)	0

¹ At ASHRAE conditions. For conditions above 75°F, 55% RH, increase defrost time by 15 min. Type I refrigerator, intended for use in an area where the environmental conditions are controlled and maintained that conditions do not exceed 75°F and 55% relative humidity. Kysor Warren, whose policy is one of continuous improvement, reserves the right to change at any time specifications, designs, or prices without incurring obligation. DOE 2017 Compliant



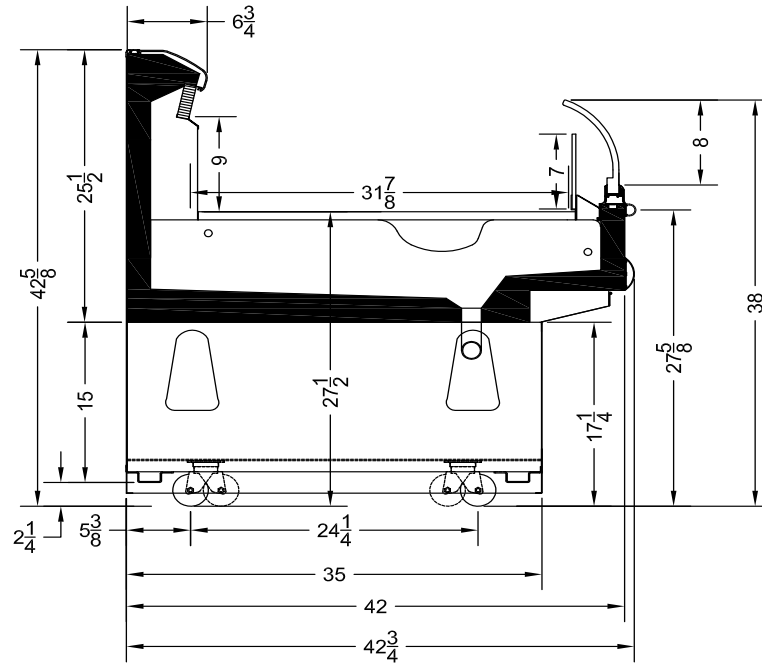
ANSI / NSF 7

The above case model has case lengths that are UL and NSF approved.

MX1LC-SC

REACH-IN MERCHANDISER

MX1LC CROSS VIEW



Add 3" thickness for a pair of ends.

MX1LC PLAN VIEW

