

ISSUE DATE: SEPTEMBER 2019

# MX1LP - STRATUS

## SINGLE-DECK SPECIFICATION SHEET



**KYSOR WARREN**  
epta refrigeration

| General Case Data                                  | Case Length (ft) |         |         |         |
|--|------------------|---------|---------|---------|
|  | 4'               | 6'      | 8'      | 12'     |
| Total Display Area (ft <sup>2</sup> )              | 12.70            | 19.06   | 25.40   | 38.13   |
| Cubic Capacity (ft <sup>3</sup> )                  | 6.90             | 10.37   | 13.80   | 20.74   |
| Max Shelf Depth (in) [Top/Bottom]                  | N/A              | N/A     | N/A     | N/A     |
| Weight (lb)  | -                | -       | -       | -       |
| Thermal Load (General)                             |                  |         |         |         |
| Discharge Air Velocity (fpm)                       | 250-300          | 250-300 | 250-300 | 250-300 |
| Fan Speed (rpm)                                    | 1200             | 1200    | 1200    | 1200    |
| Discharge Air Temp (°F)                            | 26               | 26      | 26      | 26      |
| Conventional Thermal Load, Single (Btuh) unlighted | 2064             | 3096    | 4128    | 6192    |
| Parallel Thermal Load, Single (Btuh) unlighted     | 1908             | 2862    | 3816    | 5724    |
| Thermal Load (HFC)                                 |                  |         |         |         |
| Evaporator Temperature (°F)                        | 20               | 20      | 20      | 20      |
| Superheat Setpoint (°F)                            | 6 - 8            | 6 - 8   | 6 - 8   | 6 - 8   |
| Estimated Refrigerant Charge (lbs)                 | 0.990            | 1.473   | 2.059   | 3.134   |
| Thermal Load (Glycol)                              |                  |         |         |         |
| Supply Temperature (°F)                            | 20               | 20      | 20      | 20      |
| Flow (GPM)   | QTE              | QTE     | QTE     | QTE     |
| Fluid %  | 35               | 35      | 35      | 35      |
| Pressure Drop (PSID)                               | QTE              | QTE     | QTE     | QTE     |
| Electrical Data (Amps/Watts)                       |                  |         |         |         |
| 115V/60Hz, 1 Phase                                 |                  |         |         |         |
| Fans   | 0.12             | 0.24    | 0.24    | 0.36    |

| Defrost Data (off Cycle) |                                      |                       |                 |
|--------------------------|--------------------------------------|-----------------------|-----------------|
| Defrosts per Day         | Failsafe Duration (min) <sup>1</sup> | Termination Temp (°F) | Drip Time (min) |
| 4                        | 30                                   | 45                    | 2               |

<sup>1</sup> At ASHRAE conditions. For conditions above 75°F, 55% RH, increase defrost time by 15 min. Type I refrigerator, intended for use in an area where the environmental conditions are controlled and maintained that conditions do not exceed 75°F and 55% relative humidity. Kysor Warren, whose policy is one of continuous improvement, reserves the right to change at any time specifications, designs, or prices without incurring obligation. DOE 2017 Compliant

### APPLICATIONS



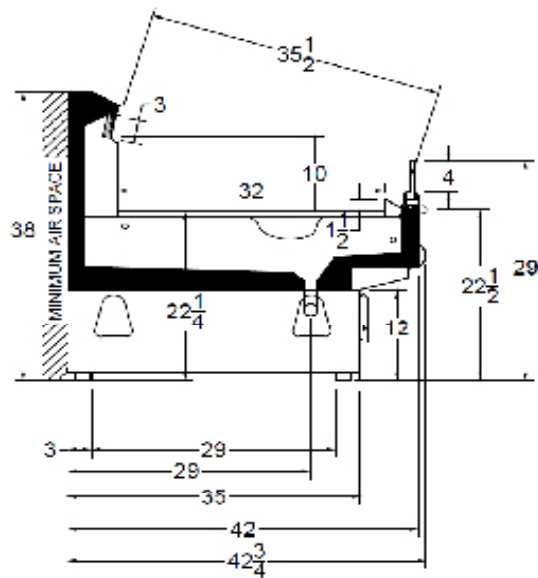
ANSI / NSF 7

The above case model has case lengths that are UL and NSF approved.

# MX1LP - STRATUS

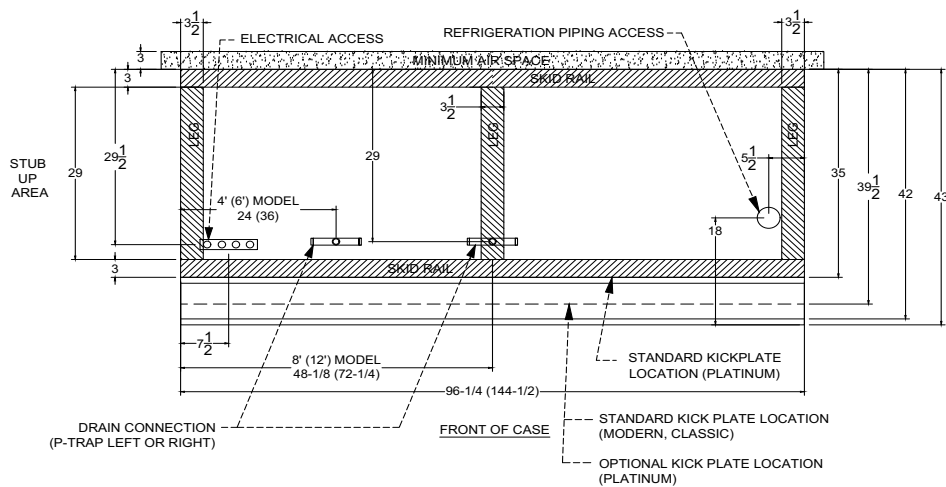
## SINGLE-DECK SPECIFICATION SHEET

### MX1LP CROSS VIEW



Add 3" thickness for a pair of ends.

### MX1LP PLAN VIEW (Single Coil)



5201 Transport Blvd  
Columbus, GA 31907  
P: 800.866.5596 • F: 706.568.8990



[www.kysorwarren.com](http://www.kysorwarren.com)



**KYSOR WARREN**  
epta refrigeration