








ISSUE DATE: SEPTEMBER 2018

# MX7LP - STRATUS

## MULTI-DECK SPECIFICATION SHEET



**KYSOR WARREN**  
epta refrigeration

Case Length (ft)					APPLICATIONS
General Case Data	4'	6'	8'	12'	
Total Display Area (ft <sup>2</sup> )	20.44	30.61	40.83	61.21	
Cubic Capacity (ft <sup>3</sup> )	50.70	76.10	101.40	152.20	
Max Shelf Depth (in) [Top/Bottom]	18/22	18/22	18/22	18/22	
Weight (lb)	-	-	-	-	
Refrigeration Data (General)					
Discharge Air Velocity (fpm)	200-325	200-325	200-325	200-325	
Fan Speed (rpm)	1900	1900	1900	1900	
Discharge Air Temp (°F)	29	29	29	29	
Conventional Thermal Load, Single (Btuh) one row of canopy LED	5559	8338	11118	16677	
Parallel Thermal Load, Single (Btuh) one row of canopy LED	5146	7719	10292	15510	
Additional Btuh per ft LED - Canopy / Shelf & Nose	13 / 11	13 / 11	13 / 11	13 / 11	
Refrigeration Data (HFC)					
Evaporator Temperature (°F)	23	23	23	23	
Superheat Setpoint (°F)	6 - 8	6 - 8	6 - 8	6 - 8	
Estimated Refrigerant Charge (lbs)	2.214	3.310	4.428	6.619	
Refrigeration Data (Glycol)					
Supply Temperature (°F)	20	20	20	20	
Flow (GPM)	QTE	QTE	QTE	QTE	
Fluid %	35	35	35	35	
Pressure Drop (PSID)	QTE	QTE	QTE	QTE	
Electrical Data (Amps/Watts)					
115V/60Hz, 1 Phase					
Fans	0.29	0.59	0.59	1.17	
Canopy Lights (Per row)					
GE LED	0.22	0.33	0.44	0.67	
Shelf Lights (Per row)					
GE LED	0.08	0.10	0.15	0.23	

Defrost Data (off Cycle)			
Defrosts per Day	Failsafe Duration (min) <sup>1</sup>	Termination Temp (°F)	Drip Time (min)
6	18	50	2

<sup>1</sup> At ASHRAE conditions. For conditions above 75°F, 55% RH, increase defrost time by 15 min. Type I refrigerator, intended for use in an area where the environmental conditions are controlled and maintained that conditions do not exceed 75°F and 55% relative humidity. Kysor Warren, whose policy is one of continuous improvement, reserves the right to change at any time specifications, designs, or prices without incurring obligation. DOE 2017 Compliant

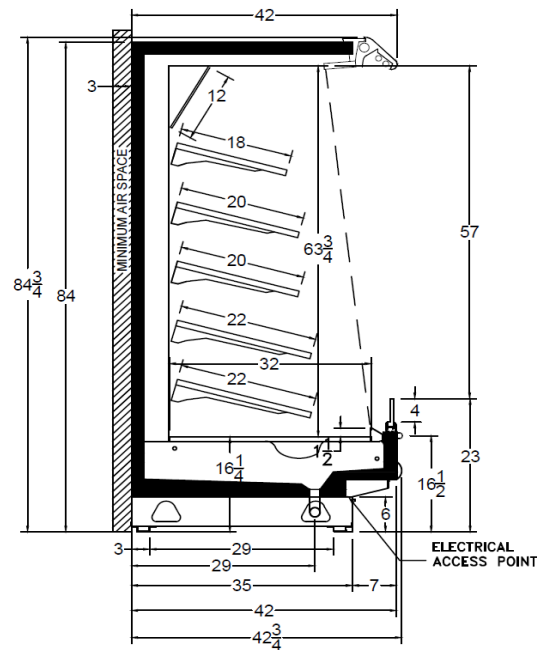


The above case model has case lengths that are UL and NSF approved.

# MX7LP - STRATUS

## MULTI-DECK SPECIFICATION SHEET

### MX7LP CROSS VIEW



Add 3" thickness for a pair of ends.

### MX7LP PLAN VIEW

