







ISSUE DATE: SEPTEMBER 2018

# QIL - Legacy Island

## ISLAND SPECIFICATION SHEET



Case Length (ft)				APPLICATIONS	
General Case Data	6'	8'	12'		
Total Display Area (ft <sup>2</sup> )	14.30	19.07	28.60		
Cubic Capacity (ft <sup>3</sup> )	19.55	26.08	39.10		
Max Shelf Depth (in) [Top/Bottom]	NA	NA	NA		
Weight (lb)	-	750	1250		
Refrigeration Data (All data is per side)					
Evaporator Temperature (°F)					
Frozen Food	-17	-17	-15		
Ice Cream	-22	-22	-20		
Dairy	24	24	24		
Discharge Air Temperature (°F)					
Frozen Food	-11	-11	-11		
Ice Cream	-16	-16	-16		
Dairy	30	30	30		
Discharge Air Velocity (fpm)	175	175	175	   <small>ANSI / NSF 7</small>	
Fan Speed (rpm)	1800	1800	1800		
Parallel Thermal Load (Btuh unlighted)					
Frozen Food	2070	2760	4140		
Ice Cream	2214	2952	4428		
Dairy	1782	2376	3564		
Conventional Thermal Load (Btuh unlighted)					
Frozen Food	2160	2880	4320		
Ice Cream	2310	3080	4620		
Dairy	1944	2592	3888		
Superheat Setpoint (°F)	6-8	6-8	6-8		
Estimated Refrigerant Charge (lbs)	4.203	5.952	9.406		
Electrical Data (Amps/Watts)					
ECM Fan Data (Amps/Qty)	0.42 / 2	0.42 / 2	0.63 / 3		
Anti-Sweat Heater Amps (I.C./F.F./Med. Temp)	0.89	0.97	1.46		
Drain Heater Amps					
Electric	0.65	0.65	0.65		
Hot Gas	0.39	0.65	1.09		
Defrost Heater Amps (Low/Dual Temp)	5.90	8.48	12.72		
Defrost Data					
	Per Day	Fail Safe (min) <sup>1</sup>	Termination (°F)	Drip Time (min)	
Electric	1	60	47	0	
Hot Gas	1	25	47	0	
Off Cycle	3	40	47	0	

1 At ASHRAE conditions. For conditions above 75°F, 55% RH, increase defrost time by 15 min. Type I refrigerator, intended for use in an area where the environmental conditions are controlled and maintained that conditions do not exceed 75°F and 55% relative humidity. Heatcraft Worldwide Refrigeration, whose policy is one of continuous improvement, reserves the right to change at any time specifications, designs, or prices without incurring obligation. DOE 2017 Compliant

The above case model has case lengths that are UL and NSF approved.

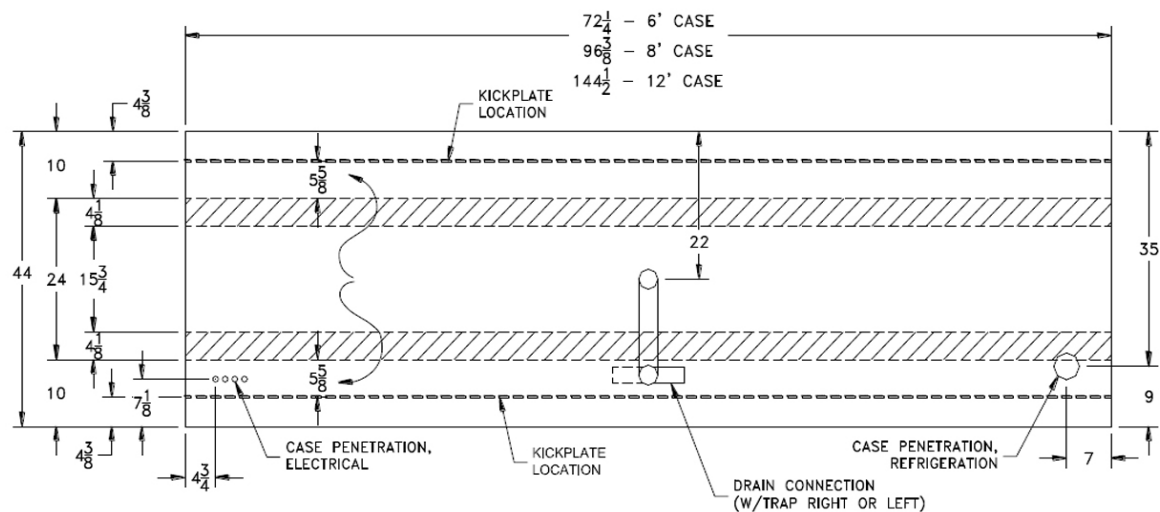
Defrost Data				
	Per Day	Fail Safe (min) <sup>1</sup>	Termination (°F)	Drip Time (min)
Electric	1	60	47	0
Hot Gas	1	25	47	0
Off Cycle	3	40	47	0

1 At ASHRAE conditions. For conditions above 75°F, 55% RH, increase defrost time by 15 min. Type I refrigerator, intended for use in an area where the environmental conditions are controlled and maintained that conditions do not exceed 75°F and 55% relative humidity. Heatcraft Worldwide Refrigeration, whose policy is one of continuous improvement, reserves the right to change at any time specifications, designs, or prices without incurring obligation. DOE 2017 Compliant

The above case model has case lengths that are UL and NSF approved.

## ISLAND SPECIFICATION SHEET

## QIL PLAN VIEW



**KYSOR WARREN**