

ISSUE DATE: SEPTEMBER 2018

QM3TE-12' w/Utilized End LEGACY

ISLAND SPECIFICATION SHEET



KYSOR WARREN
eptarefrigeration

General Case Data	Case Length (ft)	
	4' End	8' Side
Total Display Area (ft ²)	16.84	22.92
Cubic Capacity (ft ³)	31.51	42.88
Max Shelf Depth (in) [Top/Bottom]	12" / 20"	12" / 20"
Weight (lb)	900	-
Refrigeration Data (General)		
Discharge Air Velocity (fpm)	250	250
Fan Speed (rpm)	1800	1800
Discharge Air Temp (°F)	29	29
Conventional Thermal Load, Single (Btuh) one row of canopy LED	5371	7348
Parallel Thermal Load, Single (Btuh) one row of canopy LED	4782	6542
Additional Btuh per ft LED - Canopy / Shelf & Nose	11	11
Refrigeration Data (HFC)		
Evaporator Temperature (°F)	24	24
Superheat Setpoint (°F)	6-8	6-8
Estimated Refrigerant Charge (lbs)	5.77	15.82
Refrigeration Data (Glycol)		
Supply Temperature (°F)	20	20
Flow (GPM)	QTE	QTE
Fluid %	35	35
Pressure Drop (PSID)	QTE	QTE
Electrical Data (Amps/Watts)		
115V/60Hz, 1 Phase		
ECM Fan Data (Amps/Qty)	0.42/2	0.42/2
Canopy Lights (Per row)		
GE LED	0.33	0.44
Shelf Lights (Per row)		
GE LED	0.10	0.15

Defrost Data (off Cycle)			
Defrosts per Day	Failsafe Duration (min) ¹	Termination Temp (°F)	Drip Time (min)
4	40	47	0

¹ At ASHRAE conditions. For conditions above 75°F, 55% RH, increase defrost time by 15 min. Type I refrigerator, intended for use in an area where the environmental conditions are controlled and maintained that conditions do not exceed 75°F and 55% relative humidity. Kysor Warren, whose policy is one of continuous improvement, reserves the right to change at any time specifications, designs, or prices without incurring obligation. DOE 2017 Compliant

APPLICATIONS

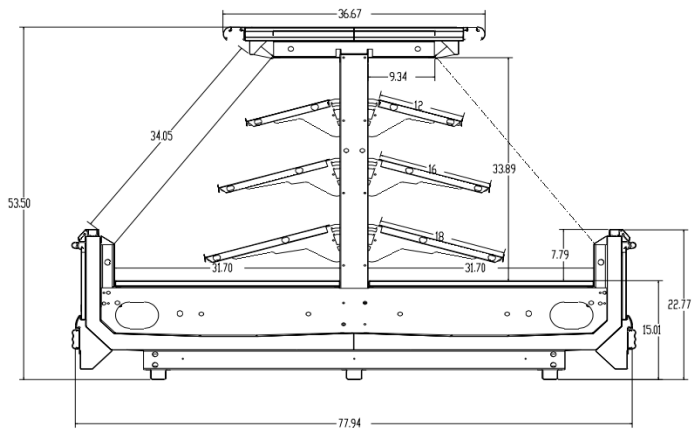


The above case model has case lengths that are UL and NSF approved.

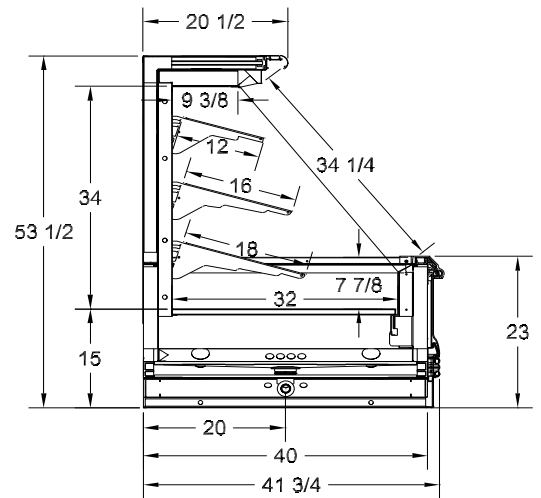
QM3TE- 12' Utilized End Case LEGACY

ISLAND SPECIFICATION SHEET

QM3TE-12 CROSS VIEW



QM3TE-4 END CASE CROSS VIEW



Add a 1-1/2" flat end or a separated end case (QM3TE-4) to the other end.

QM3TE-12 PLAN VIEW

