





ISSUE DATE: SEPTEMBER 2018

QM3TE- 4' w/End Case LEGACY

ISLAND SPECIFICATION SHEET



KYSOR WARREN
eptarefrigeration

		Case Length (ft)	APPLICATIONS
General Case Data		4' End	
Total Display Area (ft ²)		16.84	
Cubic Capacity (ft ³)		31.51	
Max Shelf Depth (in) [Top/Bottom]		12" / 20"	
Weight (lb)		900	
Thermal Load (General)			
Discharge Air Velocity (fpm)		250	
Fan Speed (rpm)		1800	
Discharge Air Temp (°F)		29	
Conventional Thermal Load, Single (Btuh) one row of canopy LED		5371	
Parallel Thermal Load, Single (Btuh) one row of canopy LED		4782	
Additional Btuh per ft LED - Canopy / Shelf & Nose		11	
Thermal Load (HFC)			
Evaporator Temperature (°F)		24	
Superheat Setpoint (°F)		6-8	
Estimated Refrigerant Charge (lbs)		5.77	
Thermal Load (Glycol)			
Supply Temperature (°F)		20	
Flow (GPM)		QTE	
Fluid %		35	
Pressure Drop (PSID)		QTE	
Electrical Data (Amps/Watts)			
115V/60Hz, 1 Phase			
ECM Fan Data (Amps/Qty)		0.42/2	
Canopy Lights (Per row)			
	GE LED	0.33	
Shelf Lights (Per row)			
	GE LED	0.10	
Defrost Data (off Cycle)			
Defrosts per Day	Failsafe Duration (min) ¹	Termination Temp (°F)	Drip Time (min)
4	40	47	0

1 At ASHRAE conditions. For conditions above 75°F, 55% RH, increase defrost time by 15 min. Type I refrigerator, intended for use in an area where the environmental conditions are controlled and maintained that conditions do not exceed 75°F and 55% relative humidity. Kysor Warren, whose policy is one of continuous improvement, reserves the right to change at any time specifications, designs, or prices without incurring obligation. DOE 2017 Compliant

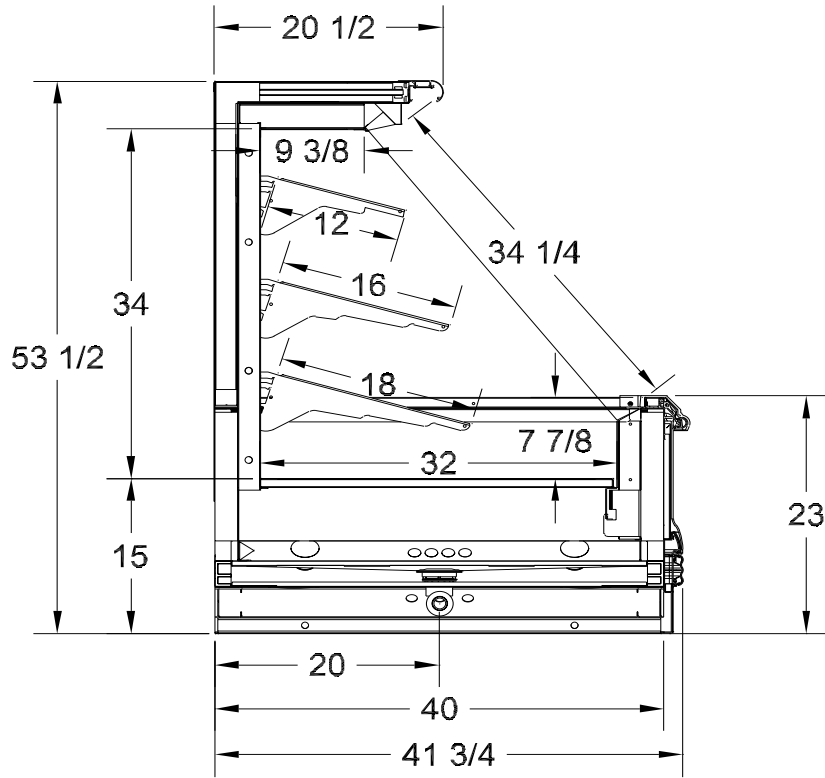


ANSI / NSF 7
The above case model has case lengths that are UL and NSF approved.

QM3TE-4' w/End Case LEGACY

ISLAND SPECIFICATION SHEET

QM3TE CROSS VIEW



Add 3" thickness for a pair of ends.

QM3TE PLAN VIEW

