








ISSUE DATE: SEPTEMBER 2018

QWM1GDC-SC

SINGLE DECK MERCHANDISER



KYSOR WARREN
eptarefrigeration

Case Length (ft)		APPLICATIONS		
General Case Data		    		
Total Display Area (ft²)	27.44			
Cubic Capacity (ft³)	31.11			
Max Shelf Depth (in) [Top/Bottom]	NA			
Weight (lb)	-			
Refrigeration Load (General)				
Evaporator Temperature (°F)	12			
Discharge Air Temp (°F)	20			
Discharge Air Velocity (fpm)	300-375			
Fan Speed (rpm)	1800			
Refrigerant Type	R-513A			
Refrigerant Charge (lbs)	4.50			
Conventional Thermal Load, Single (Btuh) unlighted	3400			
Superheat Setpoint (°F)	6-8			
Electrical Data (Amps/Watts)		  ANSI / NSF 7 The above case model has case lengths that are UL and NSF approved.		
Power Supply (Volts/Hertz/Phase)	208V/60HZ/1PH			
Evaporator Fan Motor Amps (115 V)	0.63			
Anti-sweat Heater Amps (115 V)	0.24			
Lights Amps (115V)	N/A			
Defrost Heater Amps	7.18			
Condensate Pump Amps (115 V)	N/A			
Condensate Pan Heater Amps	7.21			
Compressor RLA	8.00			
Compressor LRA	46.00			
Condenser Fan Motor Amps	0.54			
Refrigeration Cycle Amps	16.30			
Defrost Cycle Amps	14.94			
Minimum Circuit Ampacity	18.30			
Maximum Overcurrent Protection	25			
Defrost Data (off Cycle)				
Defrosts per Day	Failsafe Duration (min) ¹		Termination Temp (°F)	Drip Time (min)
3	60		47 (Coil)	0

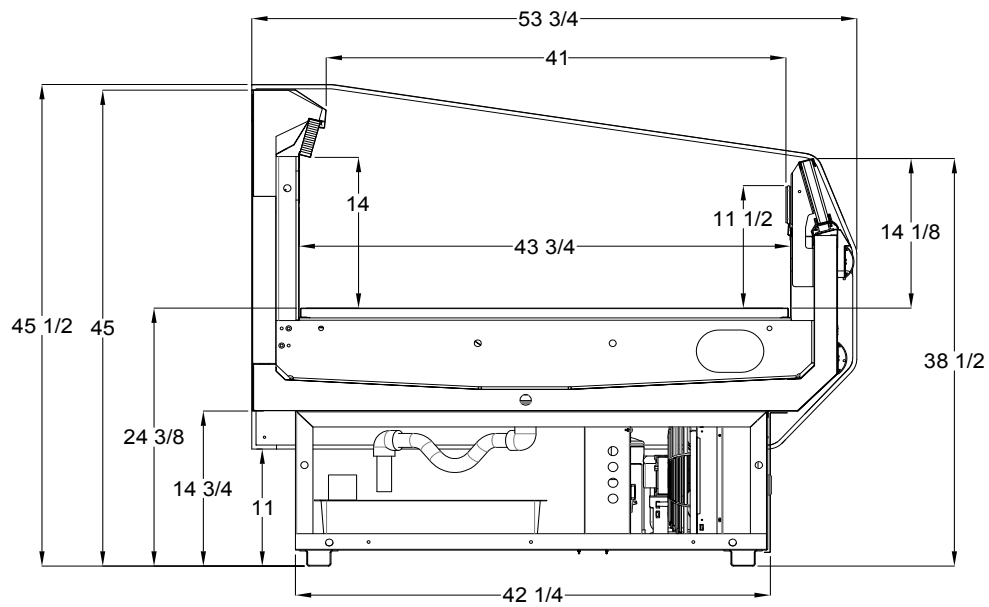
1 At ASHRAE conditions. For conditions above 75°F, 55% RH, increase defrost time by 15 min. Type I refrigerator, intended for use in an area where the environmental conditions are controlled and maintained that conditions do not exceed 75°F and 55% relative humidity. Kysor Warren, whose policy is one of continuous improvement, reserves the right to change at any time specifications, designs, or prices without incurring obligation. DOE 2017 Compliant

1 At ASHRAE conditions. For conditions above 75°F, 55% RH, increase defrost time by 15 min. Type I refrigerator, intended for use in an area where the environmental conditions are controlled and maintained that conditions do not exceed 75°F and 55% relative humidity. Kysor Warren, whose policy is one of continuous improvement, reserves the right to change at any time specifications, designs, or prices without incurring obligation. DOE 2017 Compliant

QWM1GDC-SC

SINGLE DECK MERCHANDISER

QWM1GDC-SC CROSS VIEW



Add 3" thickness for a pair of ends.

QWM1GDC-SC PLAN VIEW

