

ISSUE DATE: SEPTEMBER 2018

QWSTG - Legacy Island

ISLAND SPECIFICATION SHEET



KYSOR WARREN
epta refrigeration

| General Case Data | Case Length (ft) | | |
|--|------------------|----------|----------|
| | 6' | 8' | 12' |
| Total Display Area (ft ²) | 17.40 | 23.22 | 34.81 |
| Cubic Capacity (ft ³) | 19.78 | 26.38 | 39.56 |
| Max Shelf Depth (in) [Top/Bottom] | NA | NA | NA |
| Weight (lb) | - | - | - |
| Refrigeration Data (All data is per side) | | | |
| Evaporator Temperature (°F) | | | |
| Frozen Food | -15 | -15 | -15 |
| Ice Cream | -20 | -20 | -20 |
| Dairy | 24 | 24 | 24 |
| Discharge Air Temperature (°F) | | | |
| Frozen Food | -11 | -11 | -11 |
| Ice Cream | -16 | -16 | -16 |
| Dairy | 30 | 30 | 30 |
| Discharge Air Velocity (fpm) | | | |
| | 175 | 175 | 175 |
| Parallel Thermal Load (Btuh per side) | | | |
| Frozen Food | 1783 | 2377 | 3565 |
| Ice Cream | 2001 | 2668 | 4002 |
| Dairy | 1208 | 1611 | 2416 |
| Conventional Thermal Load (Btuh per side) | | | |
| Frozen Food | 1860 | 2480 | 3720 |
| Ice Cream | 2088 | 2784 | 4176 |
| Dairy | 1338 | 1784 | 2676 |
| Superheat Setpoint (°F) | | | |
| | 6-8 | 6-8 | 6-8 |
| Estimated Refrigerant Charge (lbs) | | | |
| | 7.504 | 10.324 | 16.035 |
| Electrical Data (Amps/Watts) | | | |
| ECM Fan Data (Amps/Qty) | | | |
| | 0.42 / 2 | 0.42 / 2 | 0.63 / 3 |
| Anti-Sweat Heater Amps (I.C./F.F./Med. Temp) | | | |
| | 1.73 | 2.17 | 3.27 |
| Drain Heater Amps | | | |
| Electric | 0.65 | 0.65 | 0.65 |
| Hot Gas | 0.39 | 0.65 | 1.09 |
| Defrost Heater Amps (Low/Dual Temp) | | | |
| | 5.90 | 8.48 | 12.72 |

| Defrost Data | | | | |
|--------------|---------|------------------------------|------------------|-----------------|
| | Per Day | Fail Safe (min) ¹ | Termination (°F) | Drip Time (min) |
| Electric | 1 | 60 | 47 | 0 |
| Hot Gas | 1 | 20 | 47 | 0 |
| Off Cycle | 4 | 35 | 47 | 0 |

¹ At ASHRAE conditions. For conditions above 75°F, 55% RH, increase defrost time by 15 min. Type I refrigerator, intended for use in an area where the environmental conditions are controlled and maintained that conditions do not exceed 75°F and 55% relative humidity. Kysor Warren, whose policy is one of continuous improvement, reserves the right to change at any time specifications, designs, or prices without incurring obligation. DOE 2017 Compliant

APPLICATIONS

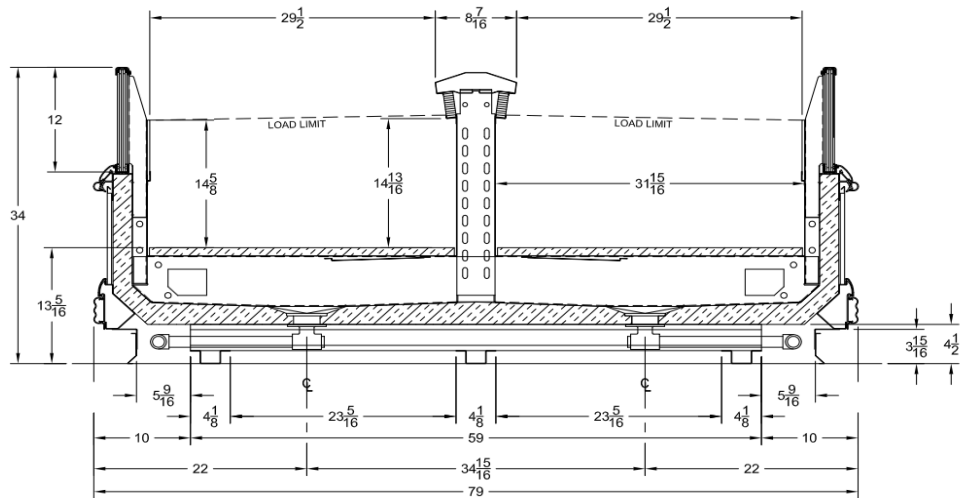


The above case model has case lengths that are UL and NSF approved.

QWSTG - Legacy Island

ISLAND SPECIFICATION SHEET

QWSTG CROSS VIEW



Add 3" thickness for a pair of flat ends.

QWSTG PLAN VIEW

