



TECHNICAL DOCUMENTATION		REVISION STATUS CHAPTER						IN ACCORDANCE WITH ORIGINAL APPROVAL		
MODEL	GRANBER. KW	ORD.	DATA	DOC. FORWARDING	ORD.	DATA	DOC. FORWARDING		PAGE:	1/31
N° DOC.	31E02157	C			F				1ST ISSUE:	20.07.20
N° CAP.	1	D	12/1/2022		G				ISSUER:	MKTG
CHAPTER	QRI	E			H					

GRANBERING KW QUICK REFERENCE GUIDE

31E02157 - REV. D

MULTIPLEXING KIT



130292
X4

130020
3x M6

13027040 3x M6x100

130026 6x 6.4x18

130004 2x M6x60

53131000 4x 6.4x18

160163
6,5 mt

36287046

46374032
+46374033
x5

541001010
1xdoor

49260031
1xdoor


130020
2x M6

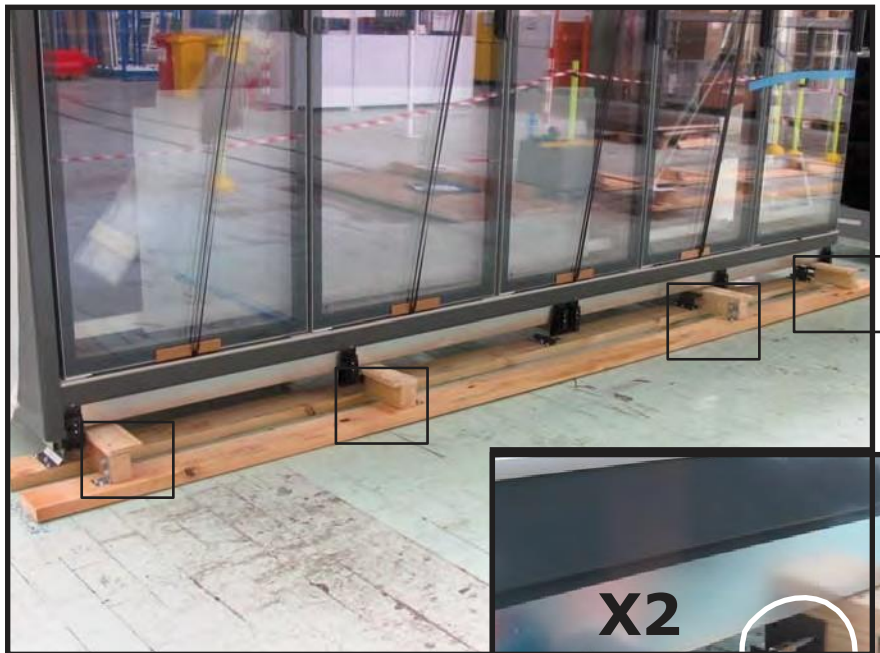
49417000

58601034
x6

45412035
1xH2000

45412034
1xH2200

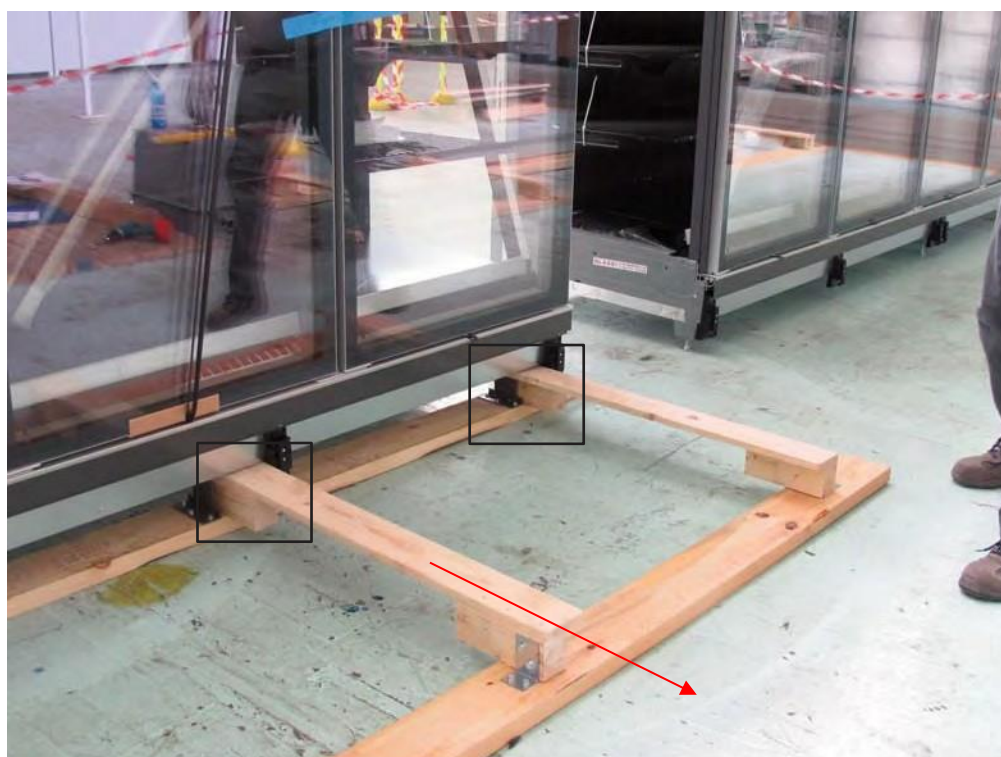
TECHNICAL DOCUMENTATION		REVISION STATUS CHAPTER						IN ACCORDANCE WITH ORIGINAL APPROVAL		
MODEL	GRANBER. KW	ORD.	DATA	DOC. FORWARDING	ORD.	DATA	DOC. FORWARDING		PAGE:	2/31
N° DOC.	31E02157	C			F				1ST ISSUE:	20.07.20
N° CAP.	1	D	12/1/2022		G				ISSUER:	MKTG
CHAPTER	QRI	E			H					




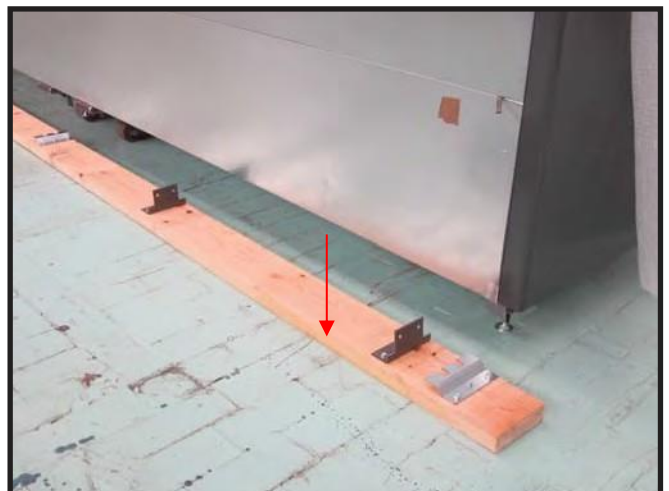
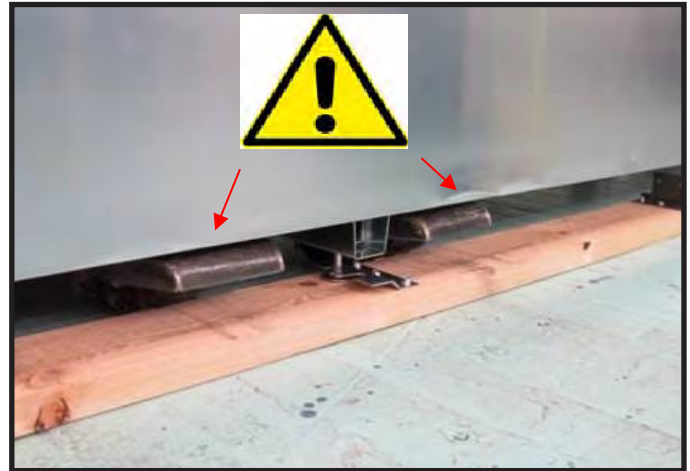
Use possibly for easier access to end and center brackets.




Remove shipping skid brackets attached to the skid in the front and the rear.



TECHNICAL DOCUMENTATION		REVISION STATUS CHAPTER						IN ACCORDANCE WITH ORIGINAL APPROVAL		
MODEL	GRANBER. KW	ORD.	DATA	DOC. FORWARDING	ORD.	DATA	DOC. FORWARDING		PAGE:	3/31
N° DOC.	31E02157	C			F				1ST ISSUE:	20.07.20
N° CAP.	1	D	12/1/2022		G				ISSUER:	MKTG
CHAPTER	QRI	E			H					



TECHNICAL DOCUMENTATION		REVISION STATUS CHAPTER						IN ACCORDANCE WITH ORIGINAL APPROVAL				
MODEL	GRANBER. KW	ORD.	DATA	DOC. FORWARDING	ORD.	DATA	DOC. FORWARDING					
N° DOC.	31E02157	C			F						PAGE:	4/31
N° CAP.	1	D	12/1/2022		G						1ST ISSUE:	20.07.20
CHAPTER	QRI	E			H			ISSUER:	MKTG			



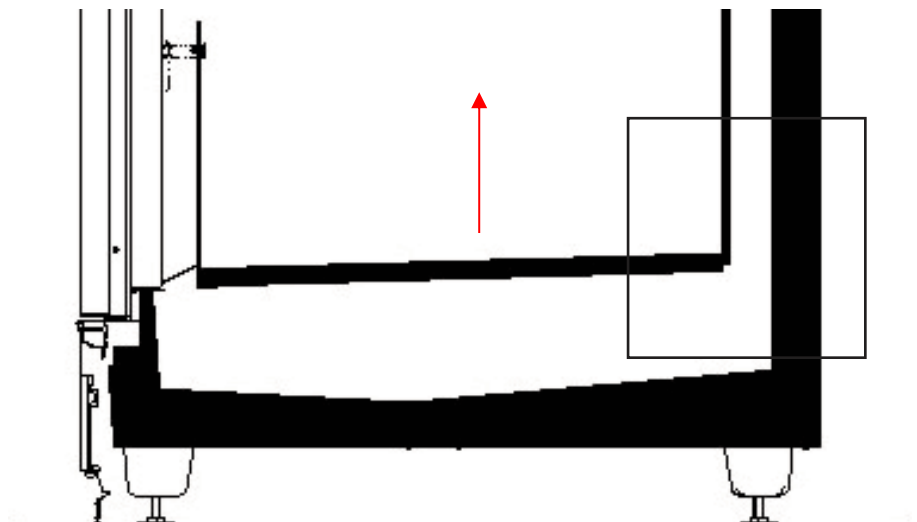
Don't move cases with levers, pry bars or Johnson bars.




Critical area where optional anti-condensate heater is installed.



Don't push against end frames to move the case.



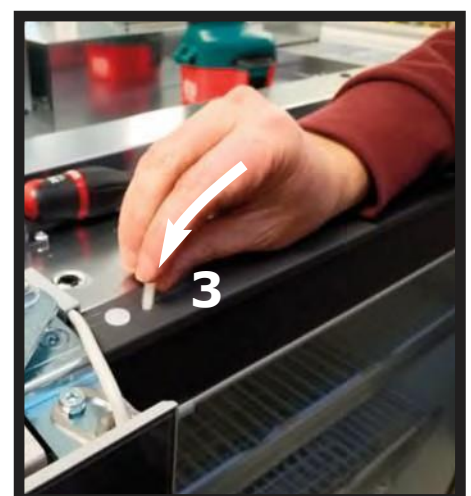
TECHNICAL DOCUMENTATION		REVISION STATUS CHAPTER						IN ACCORDANCE WITH ORIGINAL APPROVAL		
MODEL	GRANBER. KW	ORD.	DATA	DOC. FORWARDING	ORD.	DATA	DOC. FORWARDING		PAGE:	5/31
N° DOC.	31E02157	C			F				1ST ISSUE:	18.05.15
N° CAP.	1	D	12/1/2022		G				ISSUER:	MKTG
CHAPTER	QRI	E			H					




541001010
1 per door



49260031
1 per door



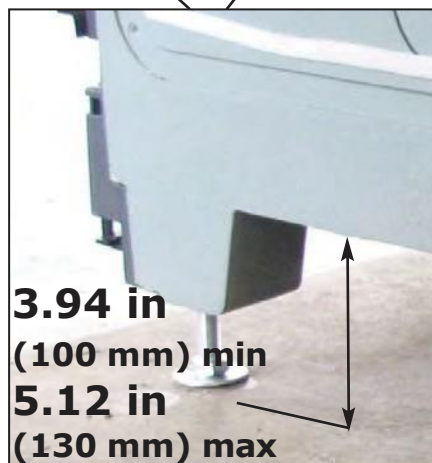
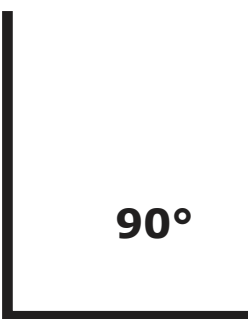
Remove shipping strap clips and screws and install plastic screws into shipping strap clip screw holes.

TECHNICAL DOCUMENTATION		REVISION STATUS CHAPTER						IN ACCORDANCE WITH ORIGINAL APPROVAL		
MODEL	GRANBER. KW	ORD.	DATA	DOC. FORWARDING	ORD.	DATA	DOC. FORWARDING		PAGE:	6/31
N° DOC.	31E02157	C			F				1ST ISSUE:	18.05.15
N° CAP.	1	D	12/1/2022		G				ISSUER	MKTG
CHAPTER	QRI	E			H					

Don't drill holes or install screws in the top of the case in front of the top wireway (wiring cables are located inside canopy foam panel).



TECHNICAL DOCUMENTATION		REVISION STATUS CHAPTER						IN ACCORDANCE WITH ORIGINAL APPROVAL		
MODEL	GRANBER. KW	ORD.	DATA	DOC. FORWARDING	ORD.	DATA	DOC. FORWARDING		PAGE:	7/31
N° DOC.	31E02157	C			F				1ST ISSUE:	20.07.20
N° CAP.	1	D	12/1/2022		G				ISSUER:	MKTG
CHAPTER	QRI	E			H					



Level the case by placing a carpenter's level vertically against the front glass of the door and horizontally against the front bottom frame rail of the case.

Ø 19 mm



TECHNICAL DOCUMENTATION		REVISION STATUS CHAPTER						IN ACCORDANCE WITH ORIGINAL APPROVAL		
MODEL	GRANBER. KW	ORD.	DATA	DOC. FORWARDING	ORD.	DATA	DOC. FORWARDING		PAGE:	8/31
N° DOC.	31E02157	C			F				1ST ISSUE:	20.07.20
N° CAP.	1	D	12/1/2022		G				ISSUER:	MKTG
CHAPTER	QRI	E			H					



160163
21 ft



Apply foam tape gasket on end of case in locations shown in photograph.

TECHNICAL DOCUMENTATION		REVISION STATUS CHAPTER						IN ACCORDANCE WITH ORIGINAL APPROVAL		
MODEL	GRANBER. KW	ORD.	DATA	DOC. FORWARDING	ORD.	DATA	DOC. FORWARDING		PAGE:	9/31
N° DOC.	31E02157	C			F				1ST ISSUE:	20.07.20
N° CAP.	1	D	12/1/2022		G				ISSUER:	MKTG
CHAPTER	QRI	E			H					



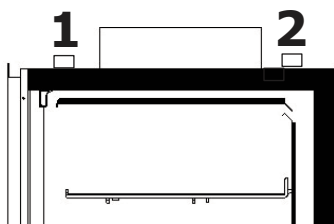
TECHNICAL DOCUMENTATION		REVISION STATUS CHAPTER						IN ACCORDANCE WITH ORIGINAL APPROVAL		
MODEL	GRANBER. KW	ORD.	DATA	DOC. FORWARDING	ORD.	DATA	DOC. FORWARDING		PAGE:	10/31
N° DOC.	31E02157	C			F				1ST ISSUE:	20.07.20
N° CAP.	1	D	12/1/2022		G				ISSUER:	MKTG
CHAPTER	QRI	E			H					



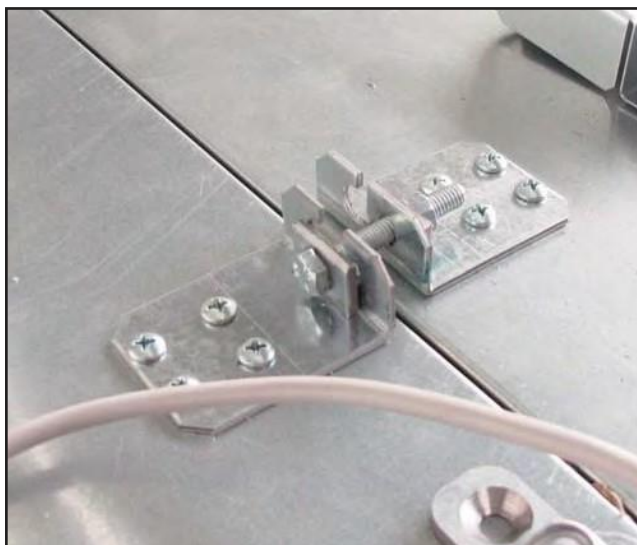
Use tape to temporarily install plastic joint trim on end of each door frame of adjoining cases.


TECHNICAL DOCUMENTATION		REVISION STATUS CHAPTER						IN ACCORDANCE WITH ORIGINAL APPROVAL		
MODEL	GRANBER. KW	ORD.	DATA	DOC. FORWARDING	ORD.	DATA	DOC. FORWARDING		PAGE:	11/31
N° DOC.	31E02157	C			F				1ST ISSUE:	20.07.20
N° CAP.	1	D			G				ISSUER:	MKTG
CHAPTER	QRI	E			H					

Move cases together and join cases using joint bolts and nuts on top of the case at the rear (2) and front (1).

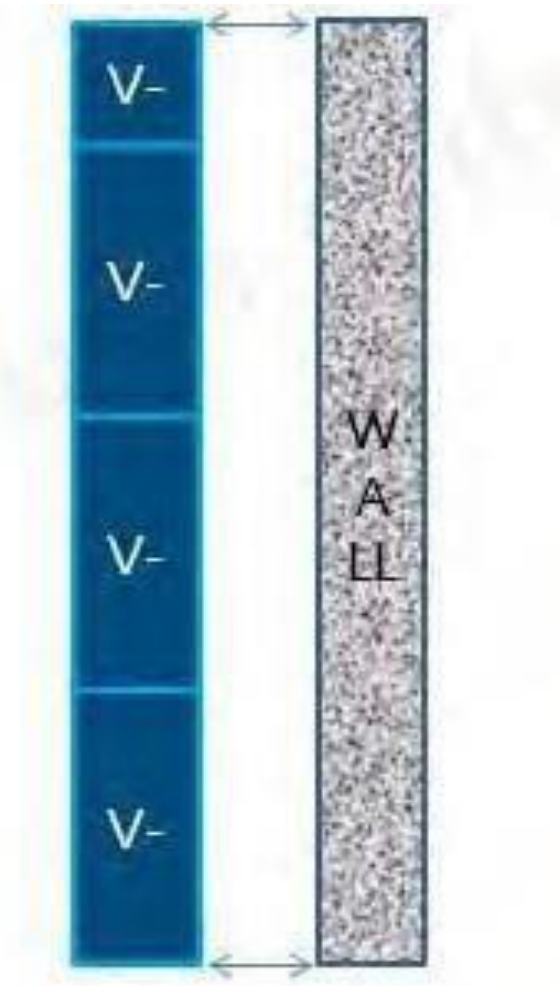


1




TECHNICAL DOCUMENTATION		REVISION STATUS CHAPTER						IN ACCORDANCE WITH ORIGINAL APPROVAL		
MODEL	GRANBER. KW	ORD.	DATA	DOC. FORWARDING	ORD.	DATA	DOC. FORWARDING		PAGE:	12/31
N° DOC.	31E02157	C			F				1ST ISSUE:	18.05.15
N° CAP.	1	D	12/1/2022		G				ISSUER:	MKTG
CHAPTER	QRI	E			H					

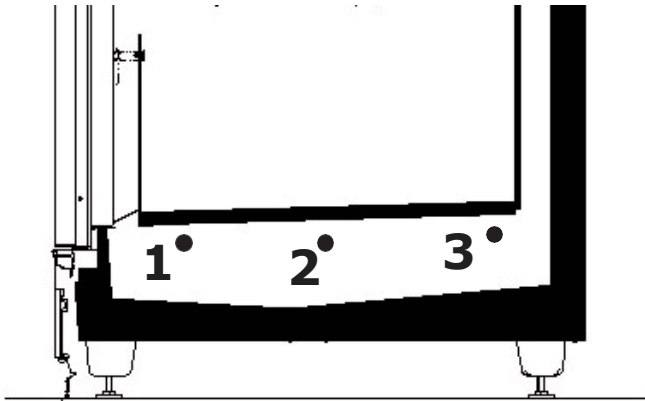
2.36 in



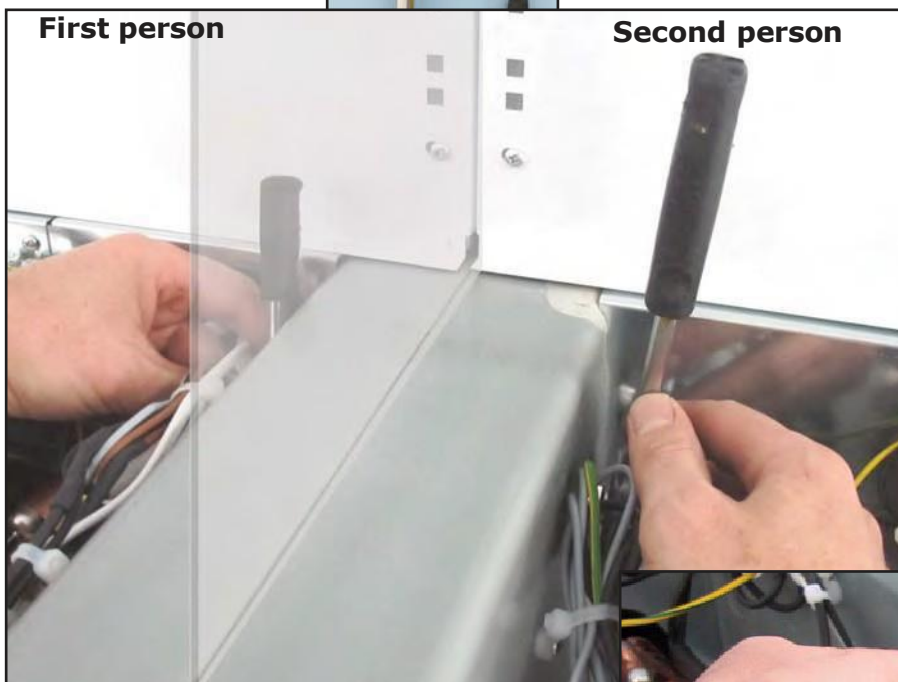
2.36 in (60 mm)

Minimum clearance required in front of case is 4 feet to allow customer access and service access. To prevent surface condensation on the rear of the case there must be a minimum clearance of 2.36 in (60 mm) between the rear of the case and the wall.

TECHNICAL DOCUMENTATION		REVISION STATUS CHAPTER						IN ACCORDANCE WITH ORIGINAL APPROVAL		
MODEL	GRANBER. KW	ORD.	DATA	DOC. FORWARDING	ORD.	DATA	DOC. FORWARDING		PAGE:	13/31
N° DOC.	31E02157	C			F				1ST ISSUE:	20.07.20
N° CAP.	1	D	12/1/2022		G				ISSUER:	MKTG
CHAPTER	QRI	E			H					

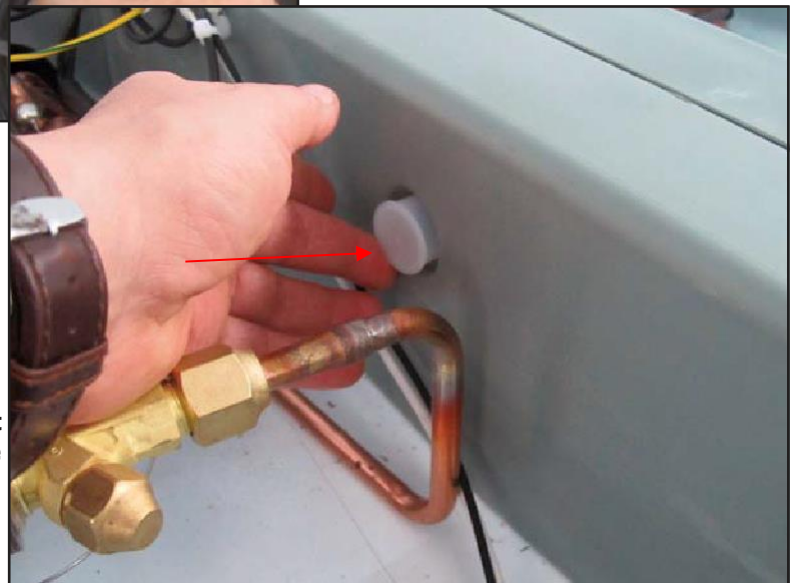


2




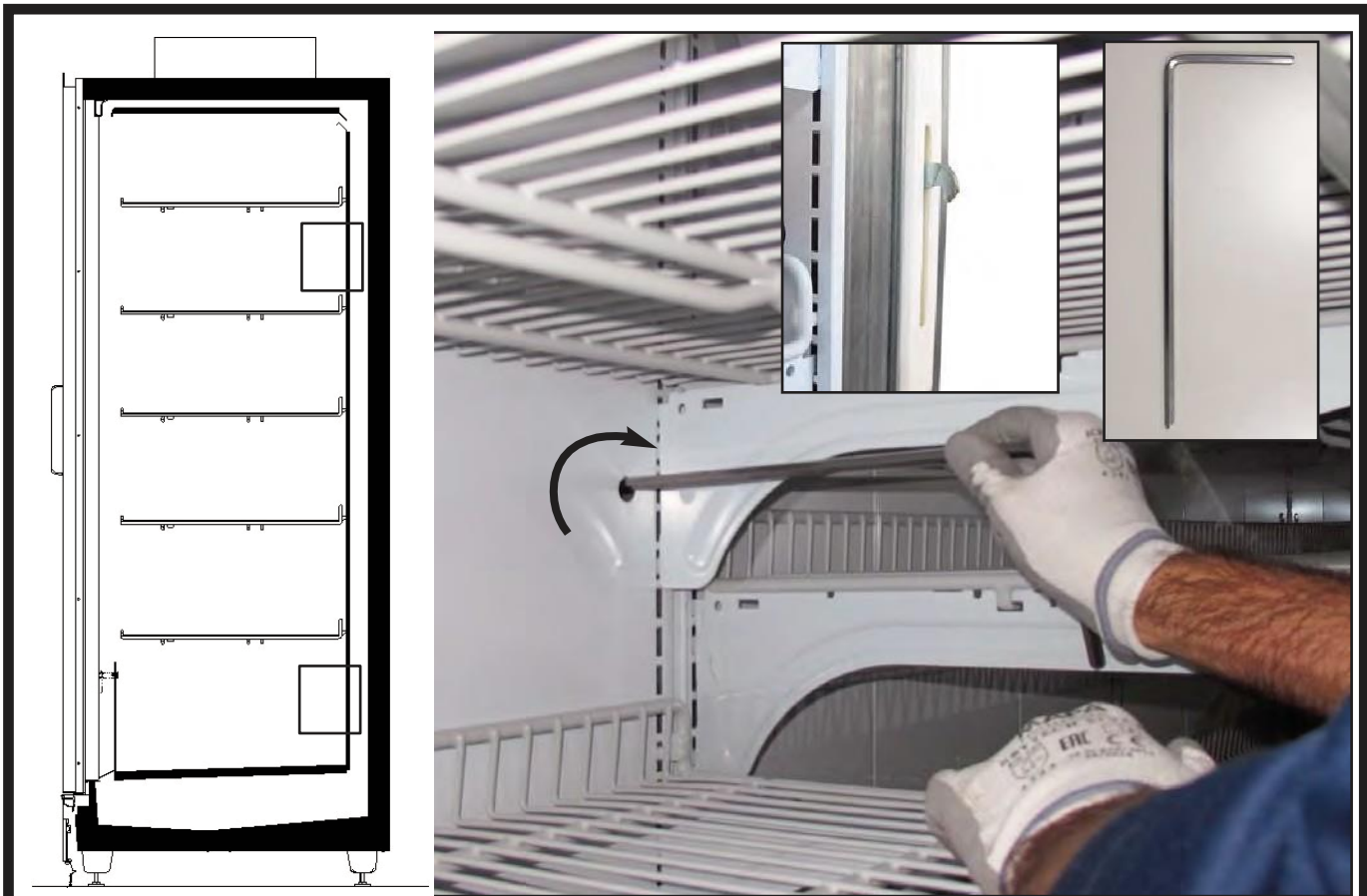
Tighten the bolts and nuts only after the cases have been moved together as close as possible.

58601034 x6




During the case joining process, be careful not to move or damage refrigerant piping or move wiring cables that may come in contact with electric defrost heaters.

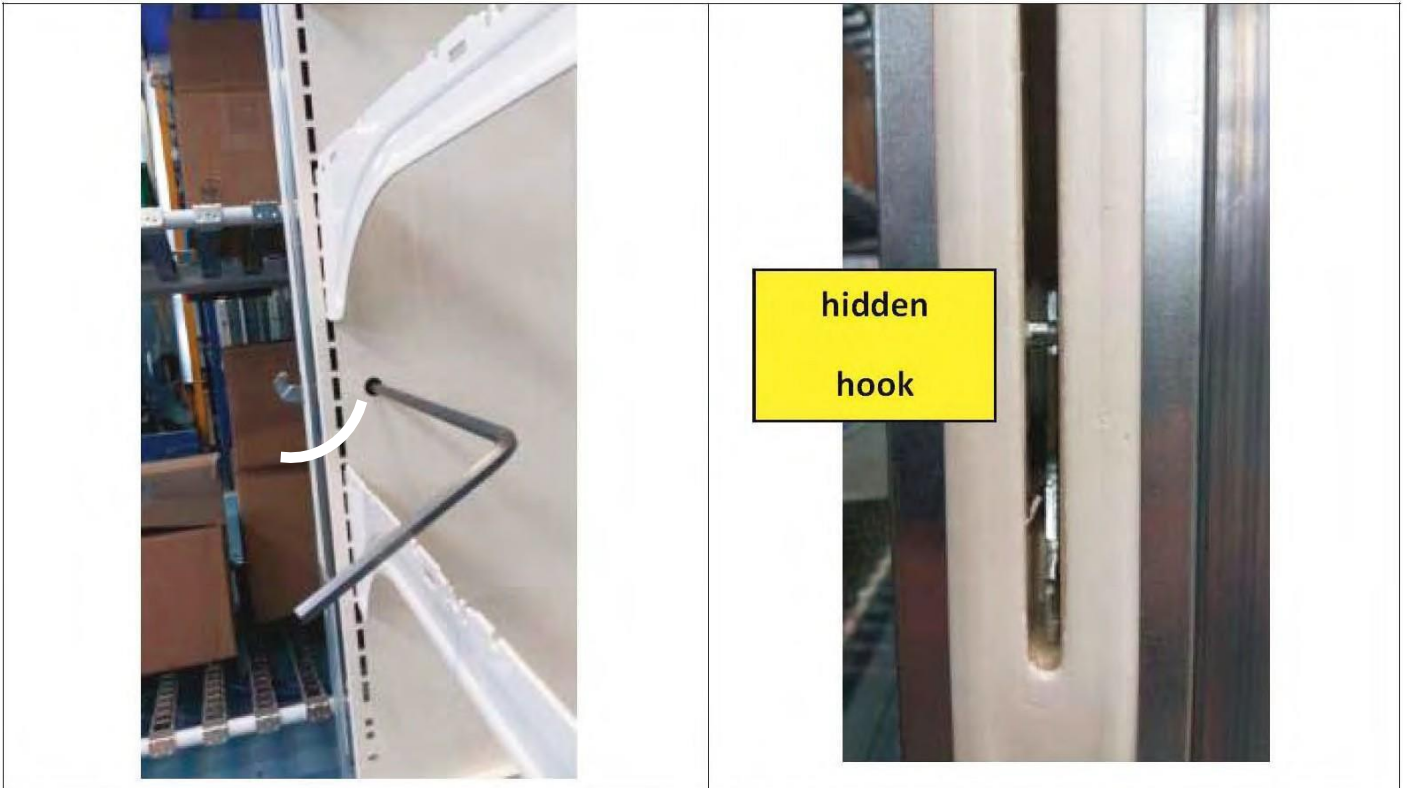
TECHNICAL DOCUMENTATION		REVISION STATUS CHAPTER						IN ACCORDANCE WITH ORIGINAL APPROVAL				
MODEL	GRANBER. KW	ORD.	DATA	DOC. FORWARDING	ORD.	DATA	DOC. FORWARDING					
N° DOC.	31E02157	C			F						PAGE:	14/29
N° CAP.	1	D	12/1/2022		G						1ST ISSUE:	20.07.20
CHAPTER	QRI	E			H			ISSUER:	MKTG			



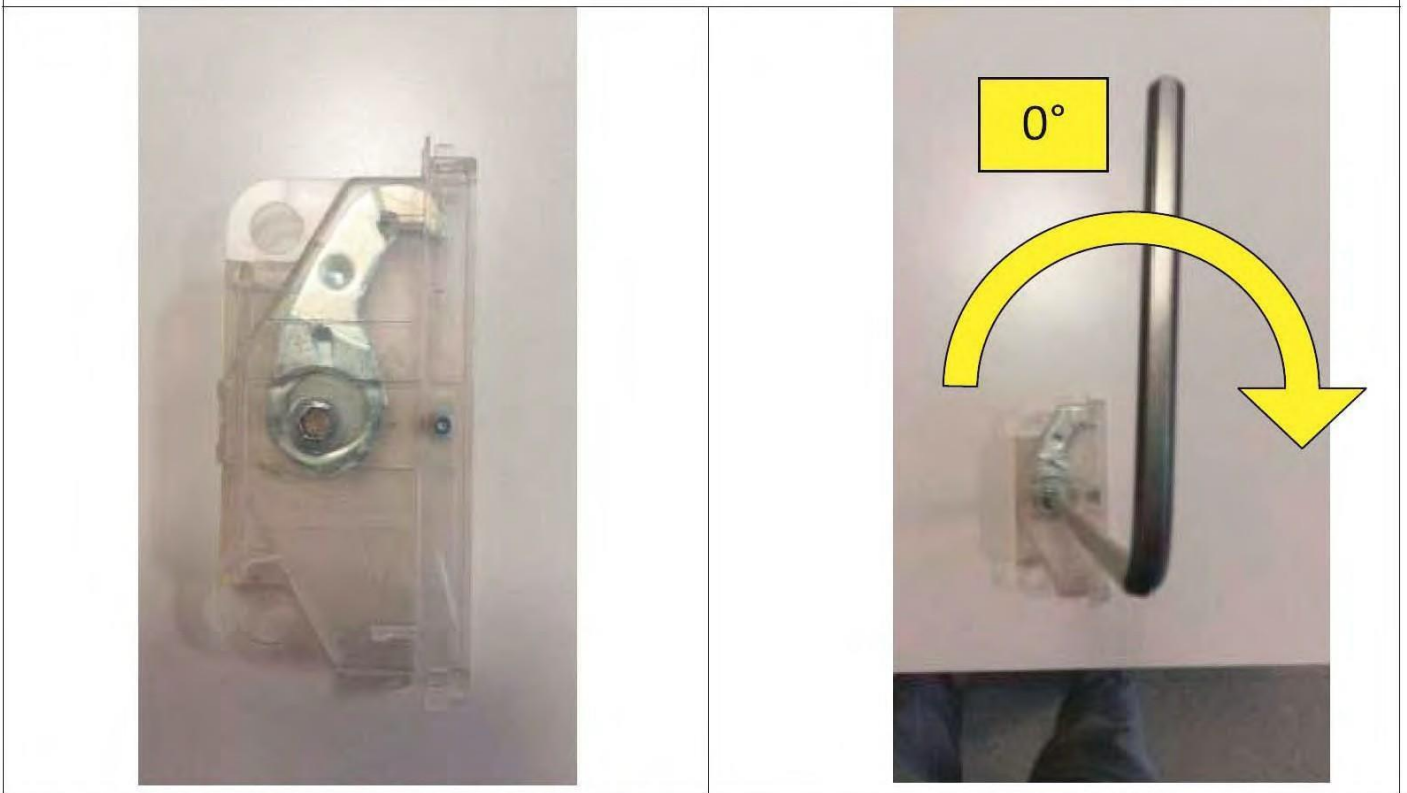
Join rear walls of adjoining cases by turning the top and bottom cam locks inside the rear foam walls clockwise.

TECHNICAL DOCUMENTATION		REVISION STATUS CHAPTER						IN ACCORDANCE WITH ORIGINAL APPROVAL		
MODEL	GRANBER. KW	ORD.	DATA	DOC. FORWARDING	ORD.	DATA	DOC. FORWARDING		PAGE:	15/31
N° DOC.	31E02157	C			F				IST ISSUANCE	18.05.15
N° CAP.	1	D	12/1/2022		G				ISSUER:	MKTG
CHAPTER	QRI	E			H					

Cam lock located inside rear foam wall (Use Hex Key or Allen wrench to turn the cam lock)




Fastner inside the panel (is necessary to use the specific tool to close the hook)

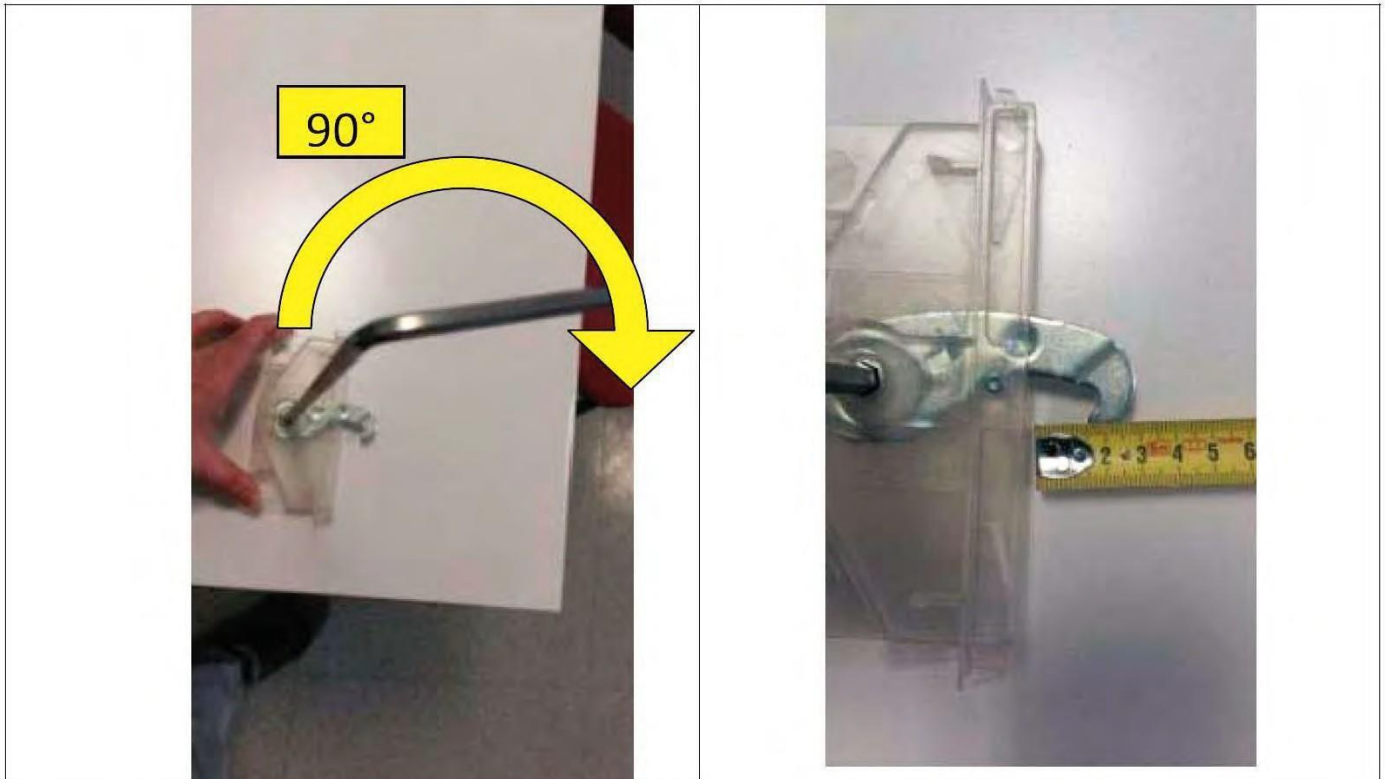


Detail exposed view of cam lock located inside rear foam walls

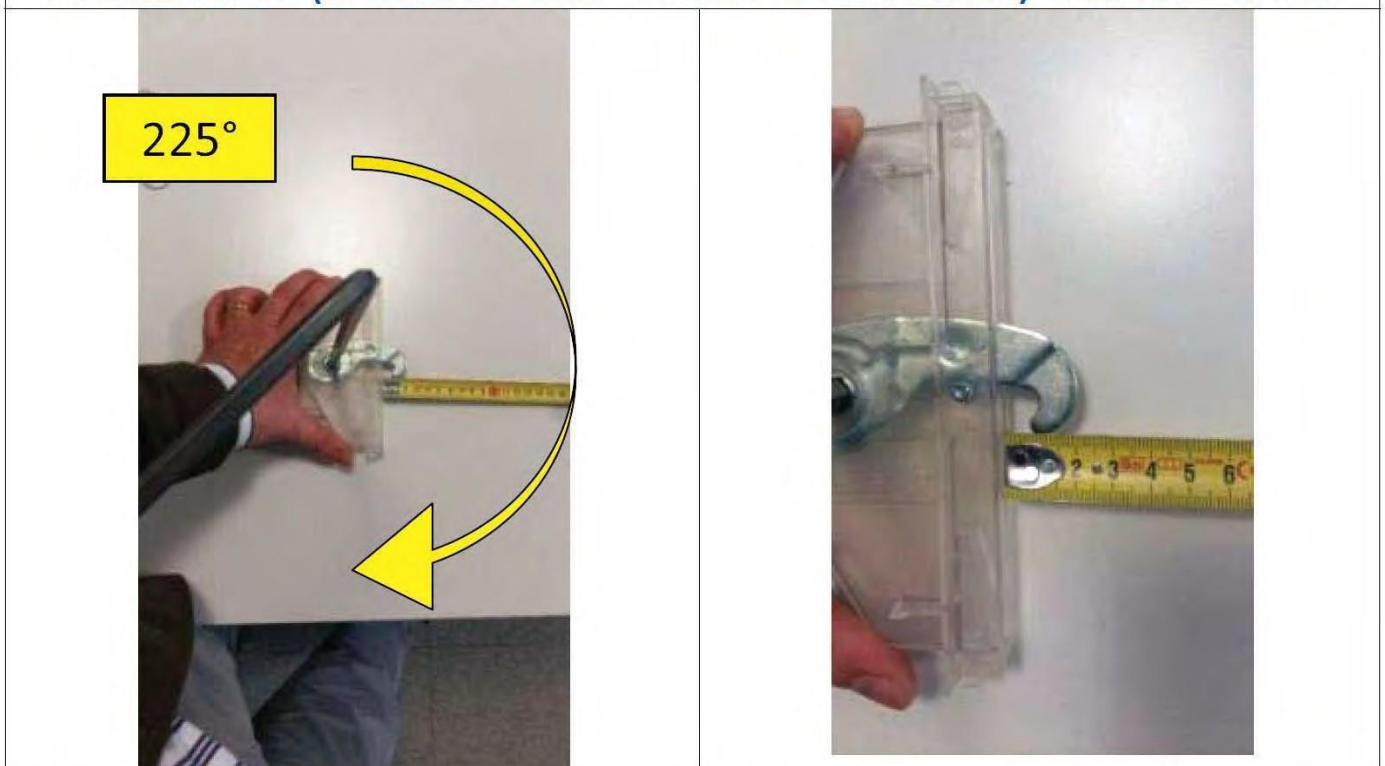
Cam lock closed position

TECHNICAL DOCUMENTATION		REVISION STATUS CHAPTER						IN ACCORDANCE WITH ORIGINAL APPROVAL		
MODEL	GRANBER. KW	ORD.	DATA	DOC. FORWARDING	ORD.	DATA	DOC. FORWARDING		PAGE:	16/31
N° DOC.	31E02157	C			F				1ST ISSUE:	18.05.15
N° CAP.	1	D	12/1/2022		G				ISSUER:	MKTG
CHAPTER	QRI	E			H					

Rotate cam lock 90° to fully extend hook of cam lock [Hook length = 0.59" (15 mm)].




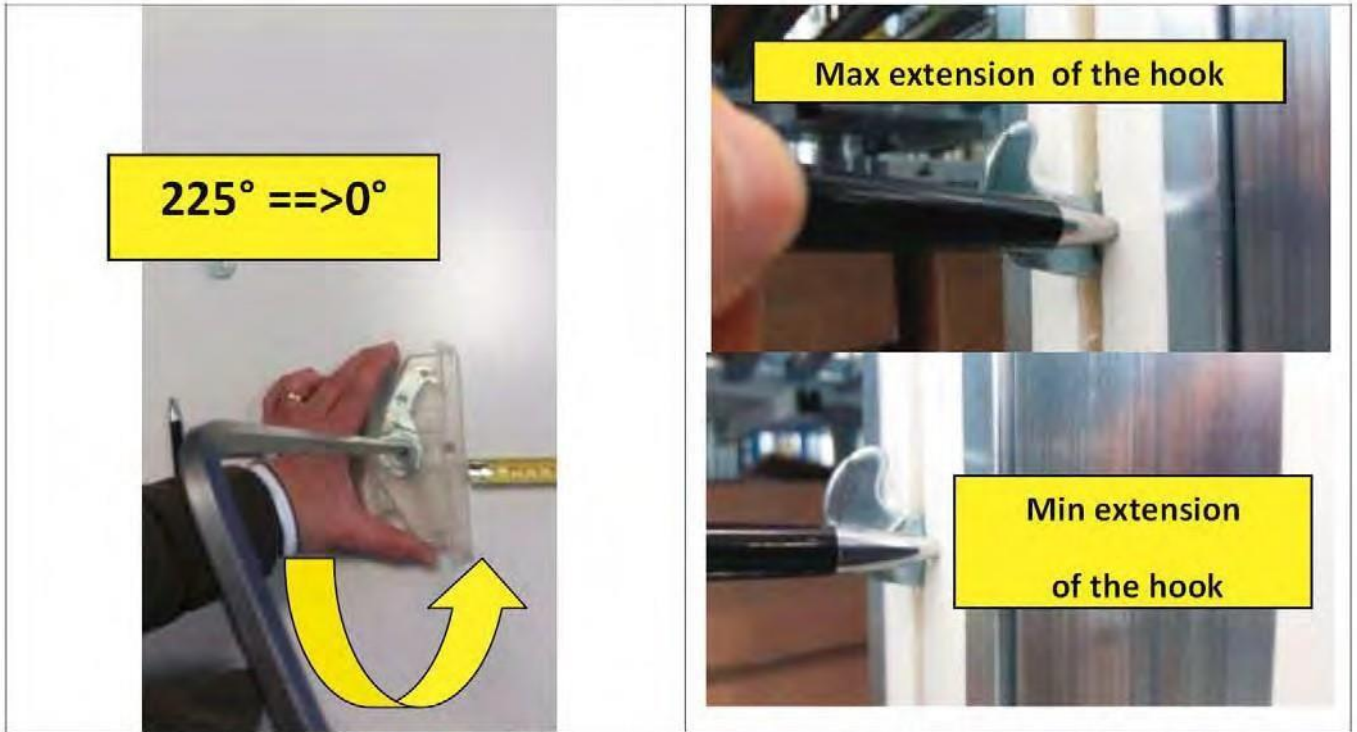
Rotation of 90°(to have the max "extension of the hook) → Lhook ~ 15mm (.59 in.)




Rotate cam lock 225° to fully hook cam lock.

Closed cam lock hook length is 0.27" (7 mm).

TECHNICAL DOCUMENTATION		REVISION STATUS CHAPTER						IN ACCORDANCE WITH ORIGINAL APPROVAL		
MODEL	GRANBER. KW	ORD.	DATA	DOC. FORWARDING	ORD.	DATA	DOC. FORWARDING		PAGE:	17/31
N° DOC.	31E02157	C			F				1ST ISSUE:	18.05.15
N° CAP.	1	D	12/1/2022		G				ISSUER:	MKTG
CHAPTER	QRI	E			H					



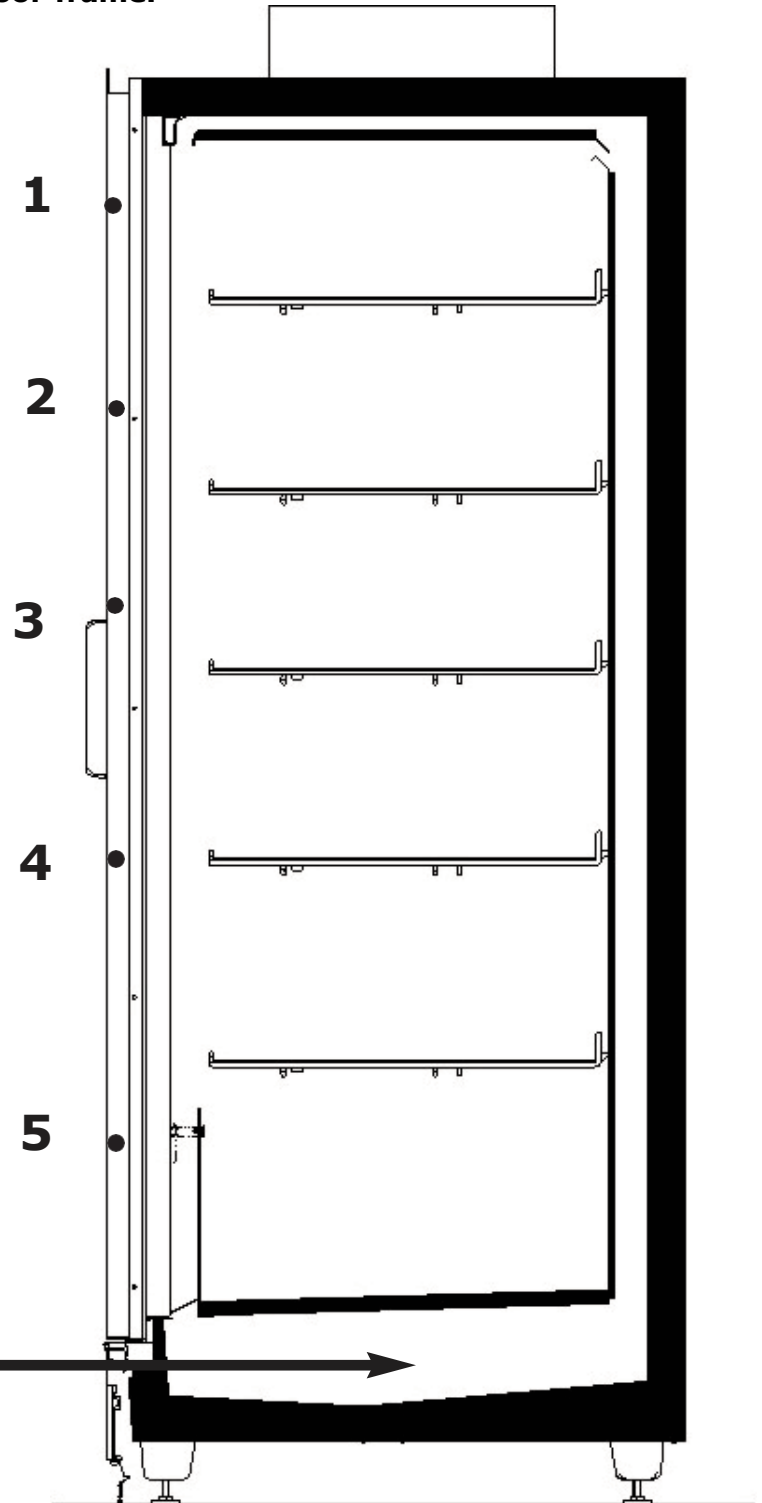
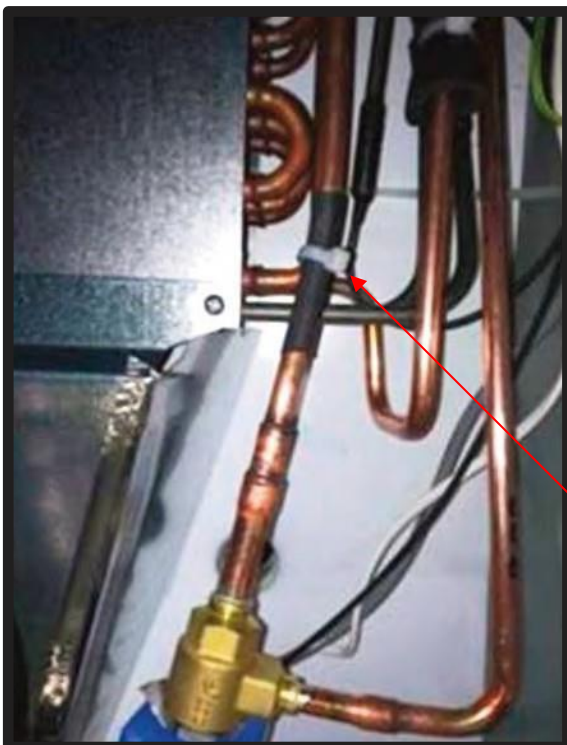
Note: If the back walls of adjoining cases are not in contact, the cam locks must be reset by fully rotating the cam lock counterclockwise 225° to guarantee maximum extension of the hook.

TECHNICAL DOCUMENTATION		REVISION STATUS CHAPTER						IN ACCORDANCE WITH ORIGINAL APPROVAL CON ORIGINALE		
MODEL	GRANBER. KW	ORD.	DATA	DOC. FORWARDING	ORD.	DATA	DOC. FORWARDING		PAGE:	18/31
N° DOC.	31E02157	C			F				1ST ISSUE:	20.07.20
N° CAP.	1	D	12/1/2022		G				ISSUER:	MKTG
CHAPTER	QRI	E			H					


Install plastic trim on each end of the door frame.

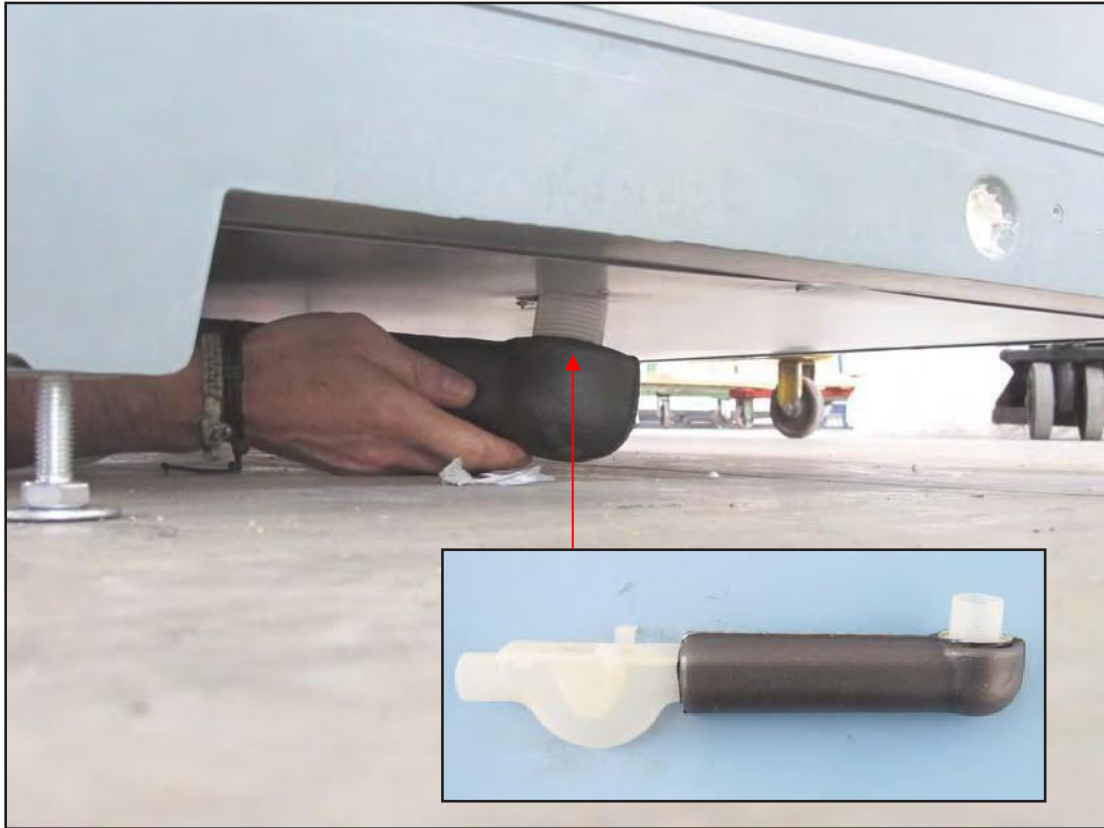


**46374032
+46374033
x5**




After joining cases in a lineup, remove wire ties and labels from CO2 evaporator tubing.

TECHNICAL DOCUMENTATION		REVISION STATUS CHAPTER						IN ACCORDANCE WITH ORIGINAL APPROVAL		
MODEL	GRANBER. KW	ORD.	DATA	DOC. FORWARDING	ORD.	DATA	DOC. FORWARDING			
N° DOC.	31E02157	C			F					
N° CAP.	1	D	12/1/2022		G					
CHAPTER	QRI	E			H					
								PAGE:	19/31	
								1ST ISSUE:	15.12.16	
								ISSUER:	MKTG	




Install drain p-traps by pushing them into drain holes and rotating them into final position under the case.

TECHNICAL DOCUMENTATION		REVISION STATUS CHAPTER						IN ACCORDANCE WITH ORIGINAL APPROVAL		
MODEL	GRANBER. KW	ORD.	DATA	DOC. FORWARDING	ORD.	DATA	DOC. FORWARDING		PAGE:	20/31
N° DOC.	31E02157	C			F				1ST ISSUE:	18.05.15
N° CAP.	1	D	12/1/2022		G				ISSUER:	MKTG
CHAPTER	QRI	E			H					


FOR THE 3 DOOR CASE ONLY: Install the front panel bracket components on the support only where they are not installed.



TECHNICAL DOCUMENTATION		REVISION STATUS CHAPTER						IN ACCORDANCE WITH ORIGINAL APPROVAL		
MODEL	GRANBER. KW	ORD.	DATA	DOC. FORWARDING	ORD.	DATA	DOC. FORWARDING		PAGE:	21/31
N° DOC.	31E02157	C			F				1ST ISSUE:	15.12.16
N° CAP.	1	D	12/1/2022		G				ISSUER:	MKTG
CHAPTER	QRI	E			H					


For end bumpers, install in sequence the painted cover (1), plastic bumper brackets (2), bumper (3) and bumper end cap (4).

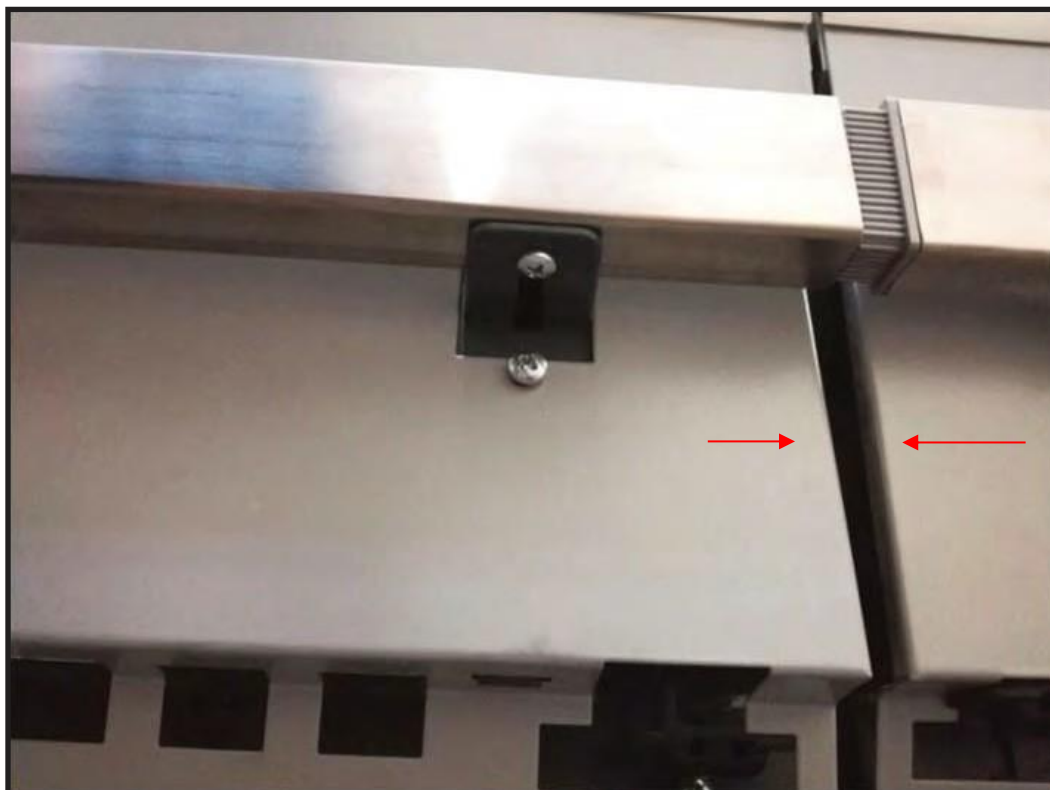



TECHNICAL DOCUMENTATION		REVISION STATUS CHAPTER						IN ACCORDANCE WITH ORIGINAL APPROVAL				
MODEL	GRANBER. KW	ORD.	DATA	DOC. FORWARDING	ORD.	DATA	DOC. FOWARDING					
N° DOC.	31E02157	C			F						PAGE:	22/31
N° CAP.	1	D	12/1/2022		G						1ST ISSUE:	15.12.16
CHAPTER	QRI	E			H			ISSUER:	MKTG			

If a front bumper was ordered, install it on the lower front panel before installing the lower front panel on the case.



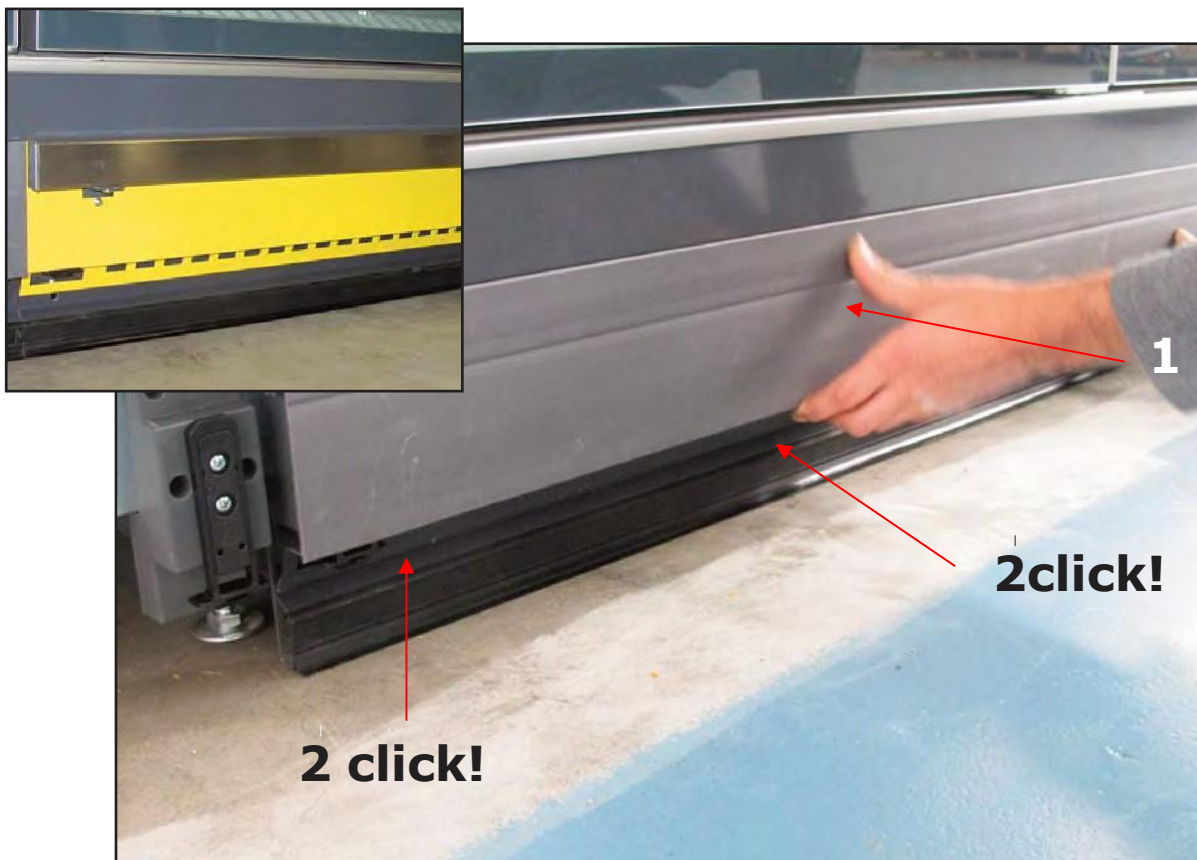
TECHNICAL DOCUMENTATION		REVISION STATUS CHAPTER						IN ACCORDANCE WITH ORIGINAL APPROVAL		
MODEL	GRANBER. KW	ORD.	DATA	DOC. FORWARDING	ORD.	DATA	DOC. FORWARDING		PAGE:	23/31
N° DOC.	31E02157	C			F				1ST ISSUE:	15.12.15
N° CAP.	1	D	12/1/2022		G				ISSUER:	MKTG
CHAPTER	QRI	E			H					




TECHNICAL DOCUMENTATION		REVISION STATUS CHAPTER						IN ACCORDANCE WITH ORIGINAL APPROVAL		
MODEL	GRANBER. KW	ORD.	DATA	DOC. FORWARDING	ORD.	DATA	DOC. FORWARDING		PAGE:	24/31
N° DOC.	31E02157	C			F				1ST ISSUE:	20.07.20
N° CAP.	1	D	12/1/2022		G				ISSUER:	MKTG
CHAPTER	QRI	E			H					



Install kick plates before installing lower front panels.



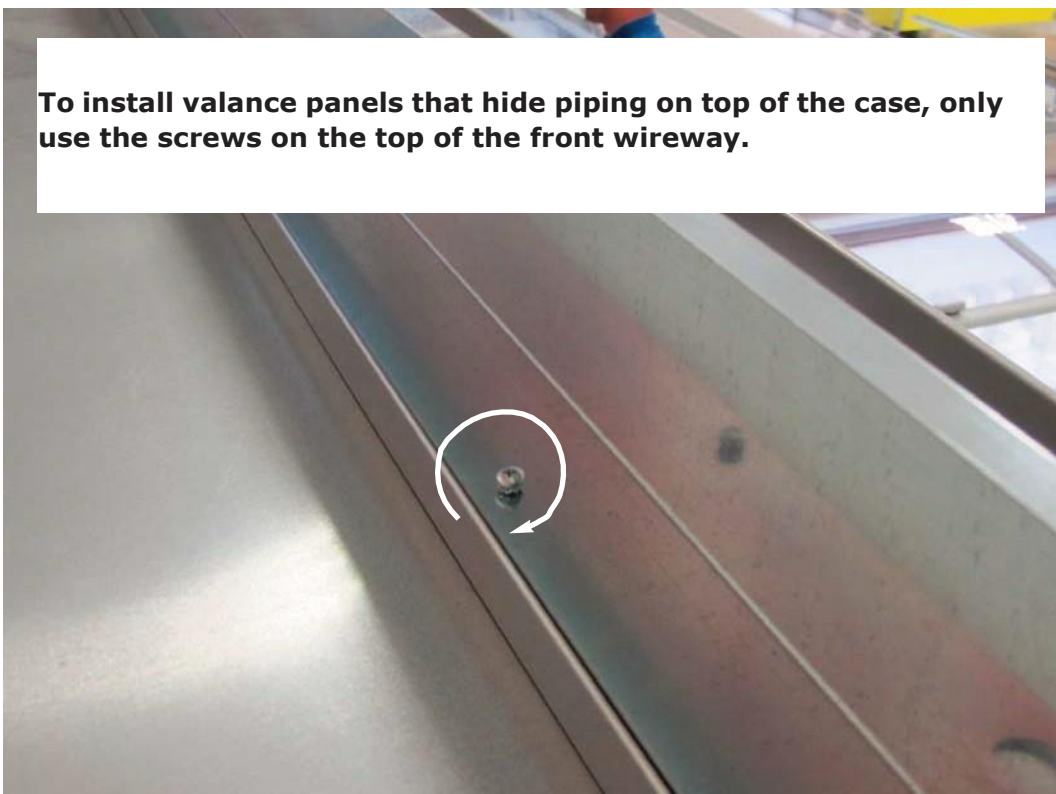
Install lower front panels by placing them over the brackets on the case and then sliding the flange bracket upward until it clicks into place.


TECHNICAL DOCUMENTATION		REVISION STATUS CHAPTER						IN ACCORDANCE WITH ORIGINAL APPROVAL		
MODEL	GRANBER. KW	ORD.	DATA	DOC. FORWARDING	ORD.	DATA	DOC. FORWARDING		PAGE:	25/31
N° DOC.	31E02157	C			F				1ST ISSUE:	15.12.15
N° CAP.	1	D	12/1/2022		G				ISSUER:	MKTG
CHAPTER	QRI	E			H					

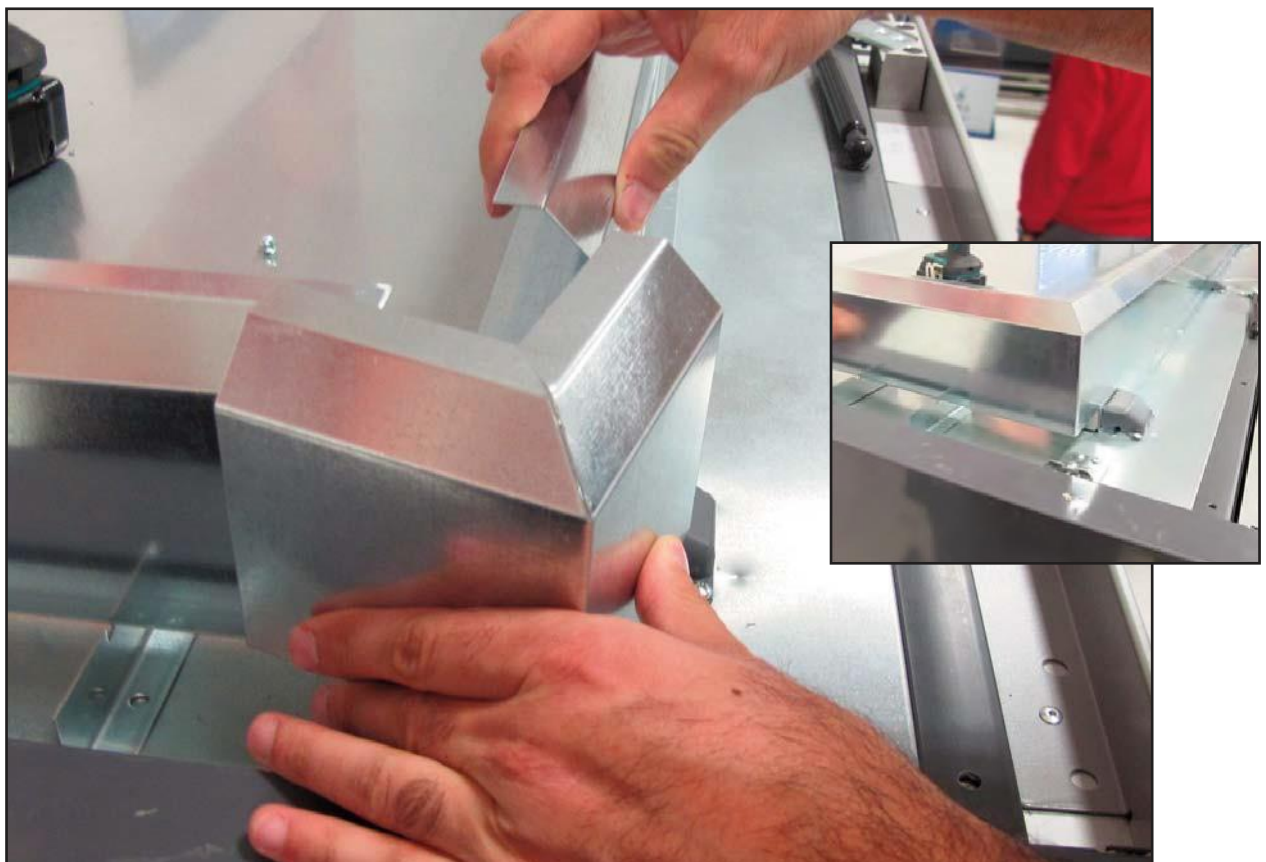
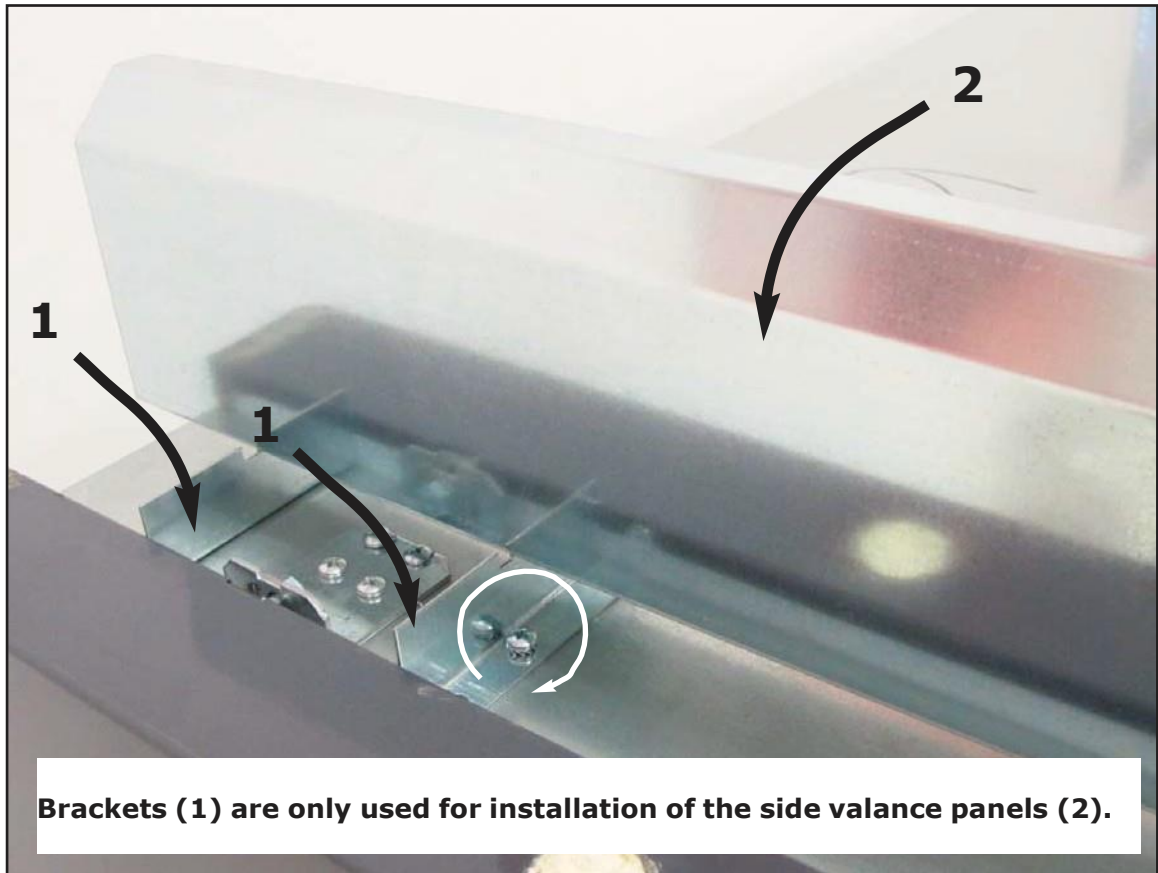
Front Valance Panel Installation




To install valance panels that hide piping on top of the case, only use the screws on the top of the front wireway.




TECHNICAL DOCUMENTATION		REVISION STATUS CHAPTER						IN ACCORDANCE WITH ORIGINAL APPROVAL		
MODEL	GRANBER. KW	ORD.	DATA	DOC. FORWARDING	ORD.	DATA	DOC. FORWARDING			
N° DOC.	31E02157	C			F					
N° CAP.	1	D	12/1/2022		G					
CHAPTER	QRI	E			H					
								PAGE:	26/31	
								1ST ISSUE:	20.07.20	
								ISSUER:	MKTG	



TECHNICAL DOCUMENTATION		REVISION STATUS CHAPTER						IN ACCORDANCE WITH ORIGINAL APPROVAL		
MODEL	GRANBER. KW	ORD.	DATA	DOC. FORWARDING	ORD.	DATA	DOC. FORWARDING			
N° DOC.	31E02157	C			F				PAGE:	27/31
N° CAP.	1	D	12/1/2022		G				1ST ISSUE:	15.12.15
CHAPTER	QRI	E			H			ISSUER:	MKTG	

DOOR ANTIFOG COATING

DOORS ARE PROVIDED WITH AN ANTIFOG COATING ON THE SURFACE OF THE INTERIOR GLASS PANE THAT PREVENTS SURFACE CONDENSATION FROM FORMING IN ANY STORE AMBIENT CONDITION. A PLASTIC PROTECTIVE FILM IS APPLIED OVER THE ANTIFOG COATING. THE EDGES OF THE PLASTIC PROTECTIVE FILM HAVE BEEN SLIGHTLY LIFTED TO ALLOW THE PLASTIC FILM TO BE EASILY REMOVED FOR USE. THE PROTECTIVE PLASTIC FILM SHOULD BE REMOVED ONLY AFTER THE CASE HAS REACHED STEADY STATE OPERATING TEMPERATURE. A REMINDER LABEL IS APPLIED ON THE PROTECTIVE PLASTIC FILM STATING "DO NOT REMOVE THE PROTECTIVE FILM UNTIL THE CABINET HAS REACHED THE OPERATING TEMPERATURE".

TECHNICAL DOCUMENTATION		REVISION STATUS CHAPTER						IN ACCORDANCE WITH ORIGINAL APPROVAL				
MODEL	GRANBER. KW	ORD.	DATA	DOC. FORWARDING	ORD.	DATA	DOC. FORWARDING					
N° DOC.	31E02157	C			F						PAGE:	28/31
N° CAP.	1	D	12/1/2022		G						1ST ISSUE:	20.07.20
CHAPTER	QRI	E			H			ISSUER:	MKTG			

DOOR ALIGNMENT ADJUSTMENT


1. Ensure the case has been properly leveled (vertically and horizontally).
2. Loosen the screws of the bottom door support.

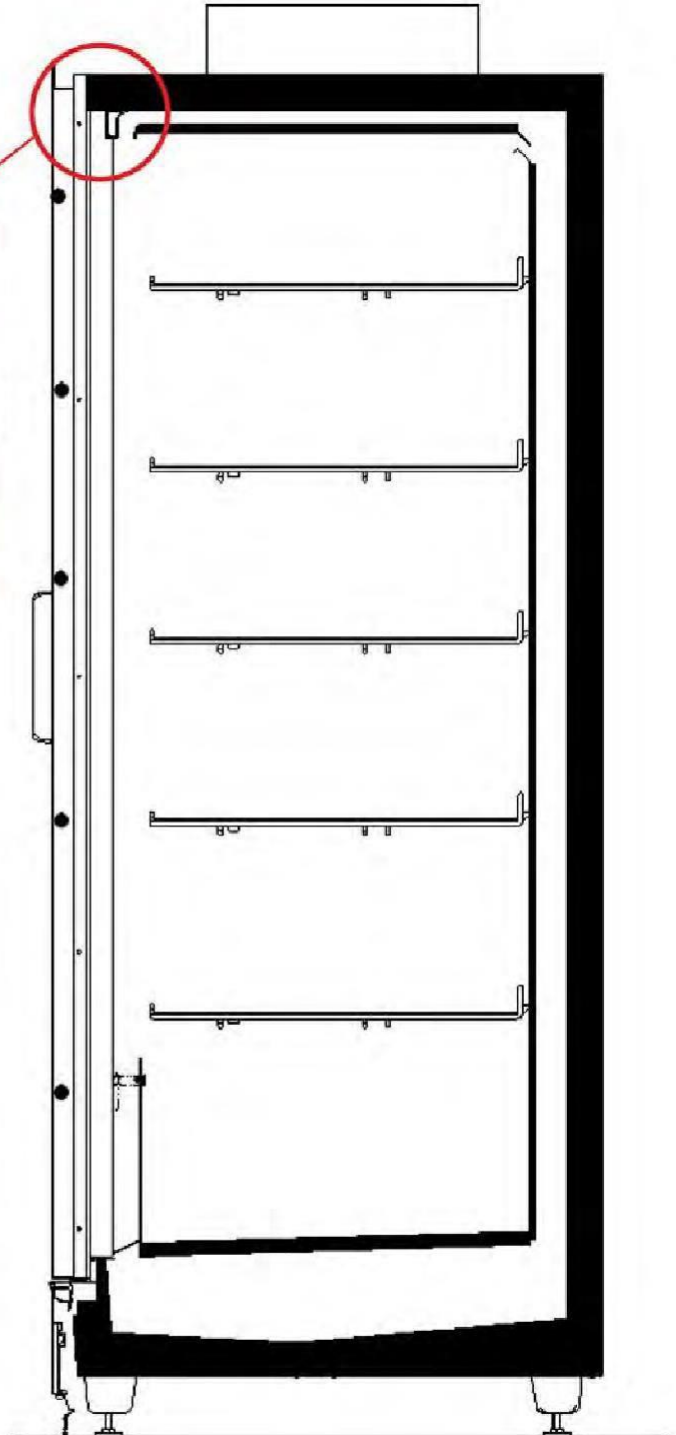


3. Align the top edge of the doors moving the bottom door support left or right.




4. Tighten the screws of the bottom door support.

TECHNICAL DOCUMENTATION		REVISION STATUS CHAPTER						IN ACCORDANCE WITH ORIGINAL APPROVAL		
MODEL	GRANBER. KW	ORD.	DATA	DOC. FORWARDING	ORD.	DATA	DOC. FORWARDING			
N° DOC.	31E02157	C			F					
N° CAP.	1	D	12/1/2022		G					
CHAPTER	QRI	E			H					
								PAGE:	29/31	
								1ST ISSUE:	18.05.15	
								ISSUER:	MKTG	



Seal the top of the joint trim profile with silicone (to prevent air infiltration).



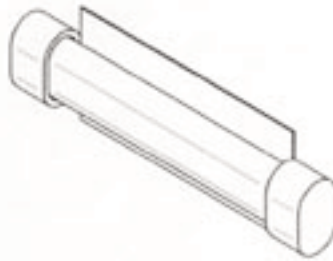
TECHNICAL DOCUMENTATION		REVISION STATUS CHAPTER						IN ACCORDANCE WITH ORIGINAL APPROVAL		
MODEL	GRANBER. KW	ORD.	DATA	DOC. FORWARDING	ORD.	DATA	DOC. FORWARDING		PAGE:	30/31
N° DOC.	31E02157	C			F				1ST ISSUE:	18.05.15
N° CAP.	1	D	12/1/2022		G				ISSUER:	MKTG
CHAPTER	QRI	E			H					

IMPORTANT

The FDA Food Code and NSF/ANSI Standard 7 require that each refrigerated storage compartment or cabinet shall have at least one securely mounted temperature indicating device that clearly displays the air temperature in the compartment.


The thermometer should be mounted inside the cabinet to reflect the warmest location of the food products stored in the cabinet.

An NSF thermometer is shipped with each cabinet to comply with the FDA Food Code and NSF/ANSI Standard 7. The Kysor Warren part number is 08D10047.



See the "X" in the photo below showing the recommended location where the thermometer should be mounted on the price tag molding for GranBering reach in cabinets as a guide. It is the responsibility of the end user to determine the warmest location inside the cabinet where the thermometer should be mounted.



TECHNICAL DOCUMENTATION		REVISION STATUS CHAPTER						IN ACCORDANCE WITH ORIGINAL APPROVAL		
MODEL	GRANBERING	ORD.	DATA	DOC. FORWARDING	ORD.	DATA	DOC. FORWARDING			
N° DOC.	31E02157	C			F				PAGE	31/31
N° CAP.	1	D	12/1/2022		G				1ST ISSUE:	20.07.20
CHAPTER	QRI	E			H			ISSUER	MKTG	

The thermometer can be attached to the front of the price tag molding as shown below with the cardboard inserted into the PTM or with double sided foam tape.



Questions regarding the FDA Food Code or NSF/ANSI Standard 7 should be addressed to local health agencies or officials.

FDA Food Code hyperlink
<https://www.fda.gov/>

NSF/ANSI Standard 7 hyperlink
<https://www.nsf.org/>

DO NOT DESTROY

**KEEP WITH CABINET OR GIVE TO
STORE MANAGER**