

ISSUE DATE: SEPTEMBER 2018

SX1LC-SC - STRATUS

SINGLE-DECK SPECIFICATION SHEET



KYSOR WARREN
epta refrigeration

General Case Data	Case Length (ft)		
	4'	6'	8'
Total Display Area (ft ²)	13.67	20.52	26.36
Cubic Capacity (ft ³)	12.58	18.90	25.16
Max Shelf Depth (in) [Top/Bottom]	16	16	16
Weight (lb)	-	-	-
Thermal Load (General)			
Evaporator Temperature (°F)	20	20	20
Discharge Air Temp (°F)	27	27	27
Discharge Air Velocity (fpm)	180-230	180-230	180-230
Fan Speed (rpm)	900	900	900
Refrigerant Type	R-513A	R-513A	R-513A
Refrigerant Charge (lbs)	3.30	3.70	4.70
Conventional Thermal Load, Single (Btuh) unlighted	3864	5796	7584
Additional Btuh per ft LED - Canopy / Shelf & Nose	13 / 11	13 / 11	13 / 11
Additional Btuh per ft T8	19	19	19
Superheat Setpoint (°F)	6 - 8	6 - 8	6 - 8
Electrical Data (Amps/Watts)			
Power Supply (Volts/Hertz/Phase)	115V/60HZ/1PH	208V/60HZ/1PH	208V/60HZ/1PH
Evaporator Fan Motor Amps (115 V)	0.06	0.11	0.11
Anti-sweat Heater Amps (115 V)	0	0	0
Lights Amps (115V)	0.24	0.43	0.47
Defrost Heater Amps	N/A	N/A	N/A
Condensate Pump Amps (115 V)	N/A	N/A	N/A
Condensate Pan Heater Amps	8.33	4.80	7.21
Compressor RLA	9.30	8.00	8.00
Compressor LRA	50.00	46.00	46.00
Condenser Fan Motor Amps	0.53	0.54	0.54
Refrigeration Cycle Amps	18.47	13.82	16.36
Defrost Cycle Amps	8.64	5.28	7.82
Minimum Circuit Ampacity	20.79	15.82	18.36
Maximum Overcurrent Protection	25.00	20	25

APPLICATIONS



Defrost Data (off Cycle)			
Defrosts per Day	Failsafe Duration (min) ¹	Termination Temp (°F)	Drip Time (min)
6	60	45 (Coil)	0

¹ At ASHRAE conditions. For conditions above 75°F, 55% RH, increase defrost time by 15 min. Type I refrigerator, intended for use in an area where the environmental conditions are controlled and maintained that conditions do not exceed 75°F and 55% relative humidity. Kysor Warren, whose policy is one of continuous improvement, reserves the right to change at any time specifications, designs, or prices without incurring obligation. DOE 2017 Compliant

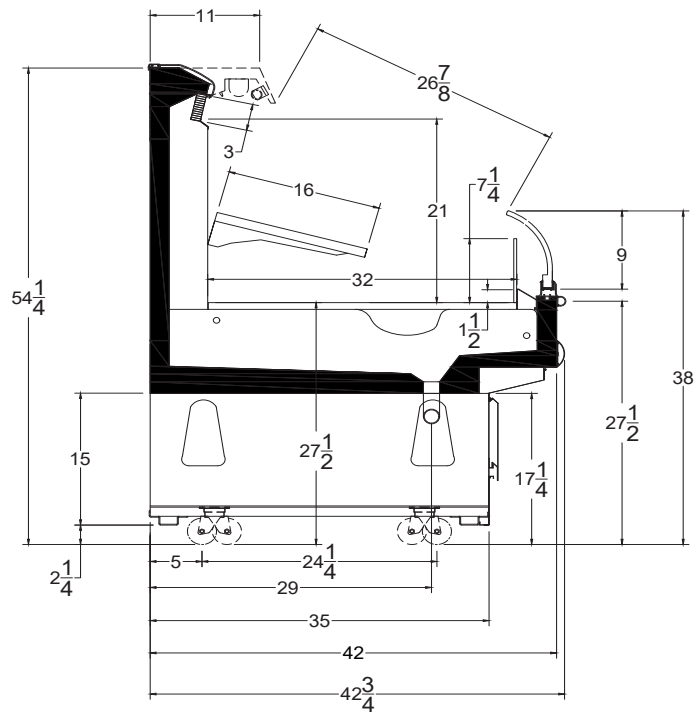


The above case model has case lengths that are UL and NSF approved.

SX1LC-SC - STRATUS

SINGLE-DECK SPECIFICATION SHEET

SX1LC CROSS VIEW



Add 3" thickness for a pair of ends.

SX1LC PLAN VIEW

