

ISSUE DATE: SEPTEMBER 2018

# SX1LP - STRATUS

## MULTI-DECK SPECIFICATION SHEET



**KYSOR WARREN**  
epta refrigeration

General Case Data	Case Length (ft)			
	4'	6'	8'	12'
Total Display Area (ft <sup>2</sup> )	13.18	19.78	26.36	39.57
Cubic Capacity (ft <sup>3</sup> )	12.58	18.90	25.16	37.80
Max Shelf Depth (in) [Top/Bottom]	16	16	16	16
Weight (lb)	-	-	-	-
Refrigeration Data (General)				
Discharge Air Velocity (fpm)	180-230	180-230	180-230	180-230
Fan Speed (rpm)	900	900	900	900
Discharge Air Temp (°F)	29	29	29	29
Conventional Thermal Load, Single (Btuh) unlighted	3792	5688	7584	11376
Parallel Thermal Load, Single (Btuh) unlighted	3508	5262	7016	10524
Refrigeration Data (HFC)				
Evaporator Temperature (°F)	23	23	23	23
Superheat Setpoint (°F)	6-8	6-8	6-8	6-8
Estimated Refrigerant Charge (lbs)	1.851	2.768	3.703	5.536
Refrigeration Data (Glycol)				
Supply Temperature (°F)	20	20	20	20
Flow (GPM)	QTE	QTE	QTE	QTE
Fluid %	35	35	35	35
Pressure Drop (PSID)	QTE	QTE	QTE	QTE
Electrical Data (Amps/Watts)				
115V/60Hz, 1 Phase				
Fans	0.06	0.11	0.11	0.22
Shelf Lights (Per row)				
T8	0.24	0.43	0.47	0.71

Defrost Data (off Cycle)			
Defrosts per Day	Failsafe Duration (min) <sup>1</sup>	Termination Temp (°F)	Drip Time (min)
6	35	47	2

<sup>1</sup> At ASHRAE conditions. For conditions above 75°F, 55% RH, increase defrost time by 15 min. Type I refrigerator, intended for use in an area where the environmental conditions are controlled and maintained that conditions do not exceed 75°F and 55% relative humidity. Kysor Warren, whose policy is one of continuous improvement, reserves the right to change at any time specifications, designs, or prices without incurring obligation. DOE 2017 Compliant

### APPLICATIONS

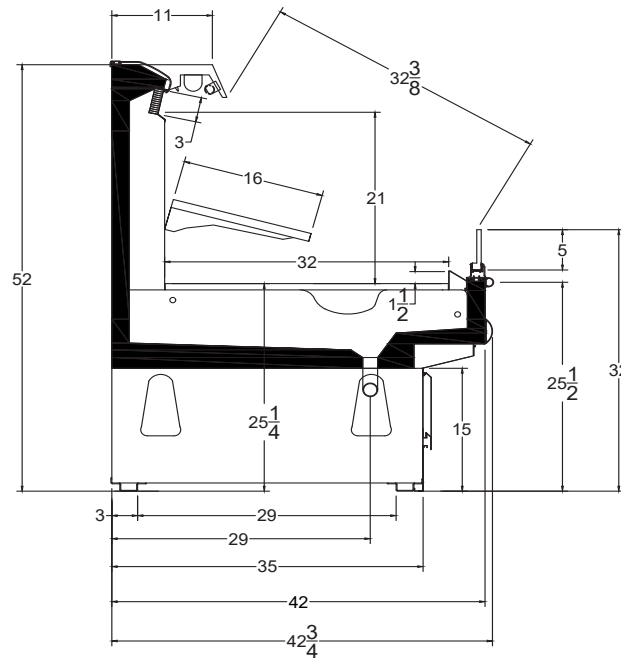


The above case model has case lengths that are UL and NSF approved.

# SX1LP - STRATUS

## MULTI-DECK SPECIFICATION SHEET

### SX1LP CROSS VIEW



Add 3" thickness for a pair of ends.

### SX1LP PLAN VIEW

